



A Focused Canadian Gold Opportunity

DEVELOPING SASKATCHEWAN'S NEXT GOLD MINE

CORPORATE PRESENTATION
CEM Whistler Conference 2026

TSXV: FOR | FWB: 5QN | OTCQB: FTBYF

Cautionary Language & Legal Disclaimers



Cautionary Statements

Information set forth in this presentation contains forward-looking statements that are based on assumptions as of the date of this news release. These statements reflect management's current estimates, beliefs, intentions, and expectations. They are not guarantees of future performance. Words such as "expects", "aims", "anticipates", "targets", "goals", "projects", "intends", "plans", "believes", "seeks", "estimates", "continues", "may", variations of such words, and similar expressions and references to future periods, are intended to identify such forward-looking statements.

Since forward-looking statements are based on assumptions and address future events and conditions, by their very nature they involve inherent risks and uncertainties. Although these statements are based on information currently available to the Company, the Company provides no assurance that actual results will meet management's expectations. Risks, uncertainties and other factors involved with forward-looking information could cause actual events, results, performance, prospects and opportunities to differ materially from those expressed or implied by such forward-looking information. Forward looking information in this presentation includes, but is not limited to, the Company's objectives, goals, intentions or future plans, statements, exploration results, potential mineralization, timing of the commencement of operations and estimates of market conditions. Factors that could cause actual results to differ materially from such forward-looking information include, but are not limited to failure to identify targets or mineralization, delays in obtaining, or failures to obtain, required governmental, environmental or other project approvals, political risks, inability to fulfill the duty to accommodate Indigenous peoples, inability to reach agreements with communities, amendments to applicable mining laws, uncertainties relating to the availability and costs of financing or partnerships needed in the future, changes in equity markets, inflation, changes in exchange rates, fluctuations in commodity prices, delays in the development of projects, capital and operating costs varying significantly from estimates and the other risks involved in the mineral exploration and development industry, and those risks set out in the Company's public documents filed on SEDAR+. Although the Company believes that the assumptions and factors used in preparing the forward-looking information in this presentation are reasonable, undue reliance should not be placed on such information, which only applies as of the date of this presentation, and no assurance can be given that such events will occur in the disclosed time frames or at all. The Company disclaims any intention or obligation to update or revise any forward-looking information, whether as a result of new information, future events or otherwise, other than as required by law. For more information on Fortune Bay, readers should refer to Fortune Bay's website at www.fortunebaycorp.com

The Corporate Presentation contains information which was accurate at the time of posting, but may be superseded by subsequent disclosures.

Qualified Person

The technical and scientific information in this presentation has been reviewed and approved by Dale Verran, M.Sc., P.Geo., Chief Executive Officer, who is a Qualified Person as defined by NI 43-101. Mr. Verran is an employee of Fortune Bay and is not independent of the Company under NI 43-101.

Technical Reports & Disclosures

Goldfields Project - Goldfields Project Updated NI 43-101 Technical Report & Preliminary Economic Assessment, Saskatchewan, Canada. Report dated October 20, 2025. Prepared by Kevin Murray, P.Eng.; Scott C. Elfen, P.E.; James Millard, P.Geo.; Jonathan Cooper, P.Eng.; Marc Schulte, P.Eng.; Cliff Revering, P.Eng.; and Ron Uken, Pr.Sci.Nat. for Fortune Bay Corp. Available under Fortune Bay Corp.'s issuer profile on SEDAR+ and Fortune Bay's website.

Poma Rosa (formerly Ixhuatán) Project - A mineral resource estimate (the "2006 Resource Estimate Report") with an effective date of June 22, 2006, was prepared for the Campamento Deposit on the Ixhuatán Project by Gary H. Giroux, P.Eng for Linear Gold Corp. ("Linear"), a predecessor company of Fortune Bay. The mineral resources were classified according to the CIM Standards on Mineral Resources and Reserves: Definitions and Guidelines, August 2000 ("CIM 2000") and incorporated, by reference, into National Instrument 43-101 - *Standards of Disclosure for Mineral Projects* ("NI 43-101"). The reader is cautioned that a Qualified Person has not done sufficient work to classify the mineral resources stated in the 2006 Resource Estimate Report as current resources. Fortune Bay is not treating this historical estimate as a current mineral resource. While this estimate was prepared in accordance with NI 43-101 and CIM 2000 in effect at the time, there is no guarantee that it would be consistent with current standards and it should not be regarded as such. Fortune Bay has not undertaken any independent verification of the data upon which the historical estimates are based. The historical estimate is considered relevant to assess the mineralization and economic potential of the property. Further important disclosure regarding historical estimates, in accordance with Section 2.4 of NI 43-101, is provided on the Company's website.

A summary report for the Ixhuatán Project (the "2011 Summary Report"), with an effective date of May 18, 2011, was prepared by Philip K. Secombe, PhD, MAIG of Equity Exploration Consultants Ltd. and Gary H. Giroux, P.Eng, in accordance with NI 43-101. The 2011 Summary Report was prepared for Cangold Limited ("Cangold") who previously optioned the property from Brigus (successor to Linear). The report provided an updated review of the project and included the mineral resource estimate from the 2006 Resource Estimate Report since no further holes had been drilled in the resource area since 2006. The 2011 Summary Report is filed on SEDAR+ under Cangold's issuer profile and is also available on Fortune Bay's website.

In accordance with regulatory requirements, the Company must enter into exploration agreements with the Project's local communities prior to initiating permitting for drilling and exploration activities. The Company is actively engaged in discussions to secure such agreements; however, there can be no assurance that agreements will be reached, or reached on terms acceptable to the Company. The timing and success of permitting and exploration activities therefore remain uncertain and subject to risks outside the Company's control.

Historical Results - This presentation contains historical exploration results. Historical results have been compiled as accurately as possible from the various data sources referenced throughout this presentation. The Company has not verified these historical results, unless stated otherwise, and there is a risk that any future confirmation work and exploration may produce results that substantially differ from the historical results. The Company also cautions that historical results on adjacent properties are not necessarily indicative of the results that may be achieved on the Project. The Company considers these historical results relevant to assess the mineralization and economic potential of the properties.

Leadership Built for Execution



Wade Dawe BComm
Executive Chairman

+25 years as accomplished entrepreneur, financier and investor
Founded or co-founded a number of successful companies



Dale Verran MSc, P.Geo
CEO & Director

+25 years mining & exploration
Previous VP Exploration Denison Mines Corp.
Significant gold experience (Goldfields & Manica Minerals)



Patrick McGrath CPA
CFO

+25 years accounting and finance in resource industry
Previous CEO of Blue Moon Metals and CFO/CEO Hemlo Mining Corp. (formerly Carcetti Capital Corp.)



Gareth Garlick BSc, P.Geo
VP Technical Services

+25 years mining cycle
Exploration to resource estimation and reconciliation on producing mines



Ron Halas P.Eng
Senior Mining Advisor

+35 years global mining and project development experience
Previous COO of Lumina Gold Corp. which was acquired in 2025.

Independent Directors



Robert Shaw MSc

Independent Director – Technical Advisor

+30 years mineral exploration throughout the Americas
Founder & exec. of listed gold companies
Instrumental in the discovery of Gramalote, La Colosa and La Quebradona +40 million ounces of gold



Melinda Lee CPA CA ICD.D

Independent Director

+20 years private and public companies
+8 years Board of Director level
Securities laws, investing, corporate finance and M&A transactions
Financial reporting, disclosure and governance



Derrick Gill BComm

Independent Director

+30 years executive experience
(Voisey's Bay Nickel, Diamond Fields Resources and Bristol Communications)
Co-founder and a director of Strategic Concepts and SCI Software (Community Engagement)



Michael Gross MD FRCS

Independent Director

Extensive capital markets experience
+20 years as Prof. of Orthopaedic surgery and founder of companies specializing in proprietary medical devices

Technical bench strength with discovery track records and execution capability

Tightly Held, High-Leverage

As of January 29, 2026



CAPITAL STRUCTURE

68.1M

SHARES ISSUED &
OUTSTANDING

Options: 6.0M | Warrants: 6.5M

INSIDER OWNERSHIP

16.3%

WARRANT PRICING

Expiry	Price	
08/02/26	\$0.30	1.36M
04/23/27	\$0.45	4.74M
10/30/27	\$1.00	0.44M

MARKET CAPITALIZATION

C\$0.90

SHARE PRICE

C\$61.3M

MARKET CAP

CASH

C\$7.8M

Date	Proceeds	Pricing
10/30/25	\$8.0M	1.4M FT @ \$1.39 6M CS @ \$1.00
04/23/25	\$3.0M	9M @ \$0.32

- ▶ **Lean share structure** positions Fortune Bay for a strong re-rating
- ▶ **Disciplined financing approach** preserves per-share leverage to development catalysts and exploration discovery
- ▶ **Strong insider ownership** aligns management with shareholders
- ▶ **Non-dilutive funding** from uranium assets supports overheads

A Focused Canadian Gold Opportunity



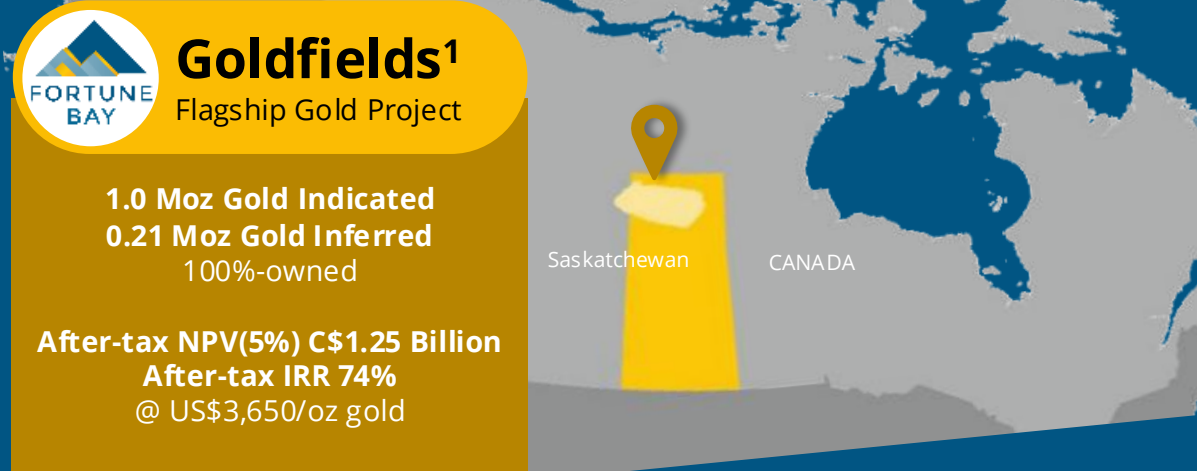
Advanced Canadian gold project

High-confidence resource
(97% Indicated in PEA plan)

Existing infrastructure +
permitting foundation

Clear, expedited development
pathway

Exploration upside



Goldfields¹
Flagship Gold Project

1.0 Moz Gold Indicated
0.21 Moz Gold Inferred
100%-owned

After-tax NPV(5%) C\$1.25 Billion
After-tax IRR 74%
@ US\$3,650/oz gold

2026 POISED TO BE TRANSFORMATIONAL

A fully-funded focus on advancing Goldfields to deliver near-term catalysts:

1. Exploration drill results with potential to meaningfully grow gold resources and define new gold zones
2. Technical advancement milestones — moving from PEA to PFS
3. Permitting and regulatory milestones that tangibly de-risk development

Non-Core Portfolio — Strategic Optionality

POMA ROSA — Mexico

- Large gold-copper system (historical resource 1.7 Moz gold)
- Epithermal + porphyry potential
- Established access & infrastructure
- Regulatory clarity in progress

URANIUM PORTFOLIO — Athabasca Basin

- Partner-funded exploration upside
- Non-dilutive, revenue generating
- Long-cycle optionality aligned with global energy themes

ROYALTY PORTFOLIO

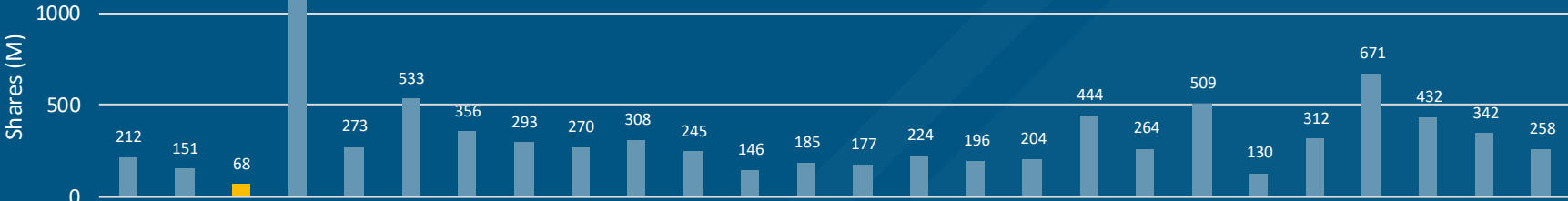
Dominican Republic (Precipitate Gold, PRG.V)

Chihuahua, Mexico

Well-Positioned to Outperform Peers

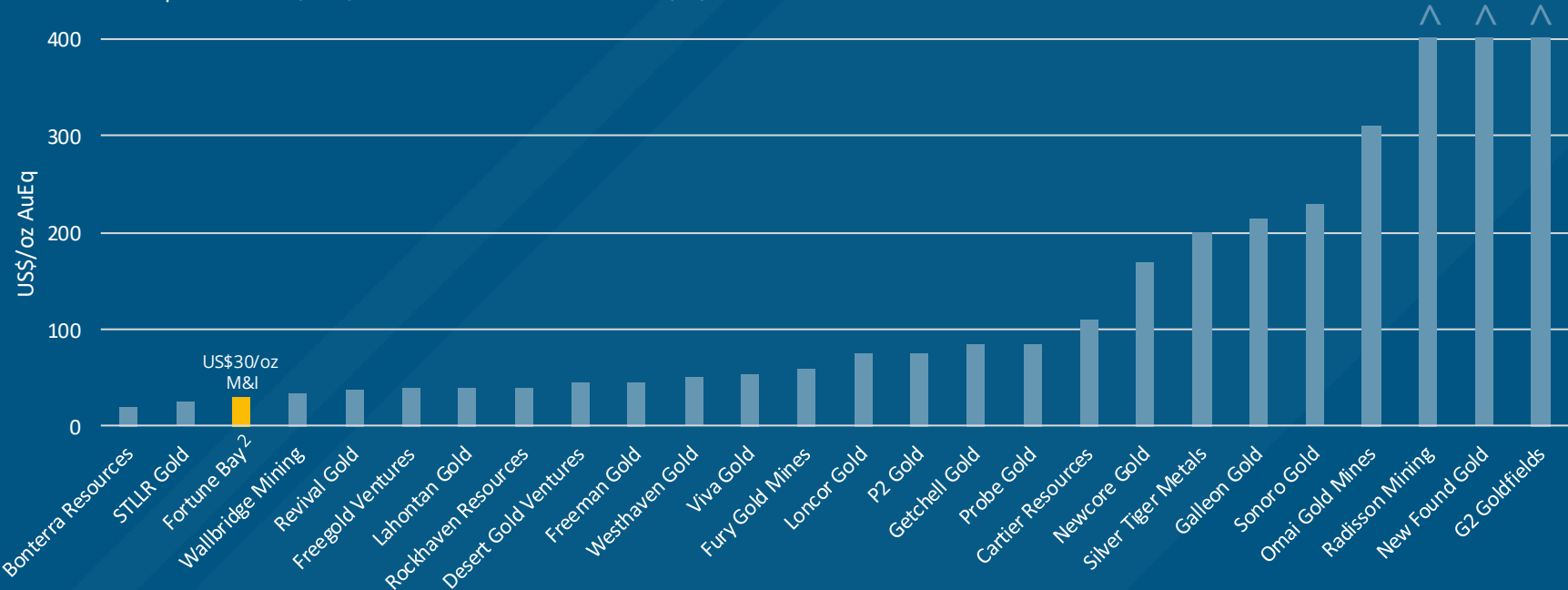


Shares Outstanding – PEA Developers¹



Resource Multiple – PEA Developers¹

Enterprise Value (US\$) / NI 43-101 M&I Resources (oz)



¹ Source: Public Company disclosures (January 5, 2026); Morrison Park Advisors: The Weekly Gold M&A Update (January 5, 2026)
² Resource multiple only includes current mineral resources for Goldfields (does not include Poma Rosa historical mineral resources). For Goldfields current mineral resources details refer to the current NI43-101 Report Updated PEA News Release that includes an updated MRE (effective date September 11, 2025) available on SEDAR+ (sedarplus.ca) and the Company's website.

Developing Saskatchewan's Next Gold Mine



Box historical headframe, mill frame & powerline

Goldfields Project, Saskatchewan

- ▶ Exceptional economics
- ▶ De-risked pathway
- ▶ Growth potential
- ▶ Top-ranked jurisdiction

A Uniquely De-Risked Development Platform



Robust Mineral Resource Base

- ▶ 97% Indicated Resources in Updated PEA mine plan
- ▶ Reconciles to within 1% of historical mine production
- ▶ Exploration upside

Historical mining area

- ▶ Gold & uranium

Established Infrastructure and Access

- ▶ Road, Power, Airport, Civil Contractors, Uranium City

Permitting Well-Advanced

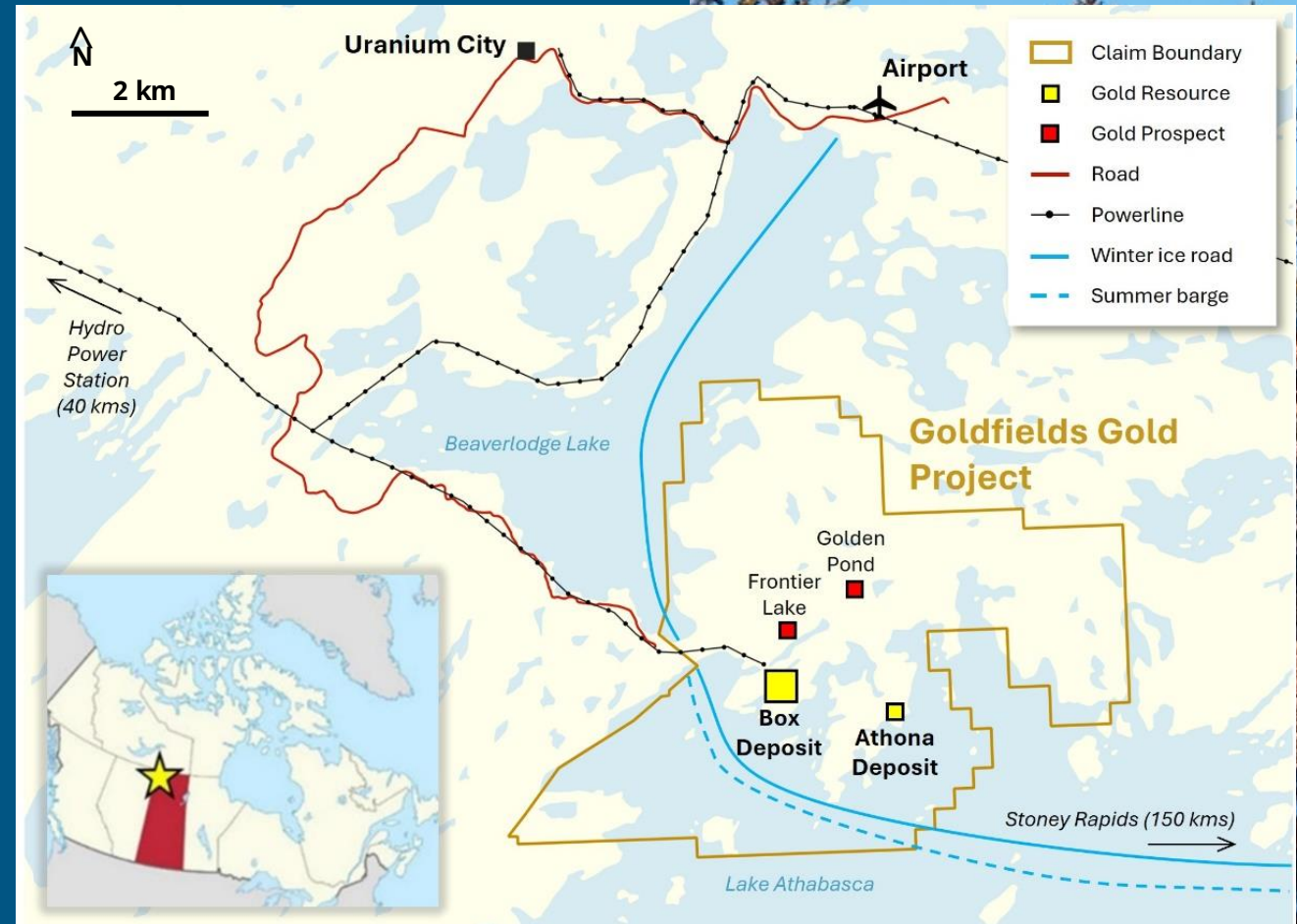
- ▶ Approved EIS (2008): Box open-pit + 5,000 tpd mill

Established Community Relationships

- ▶ Exploration Agreement (2022), consent up to and including Definitive Feasibility

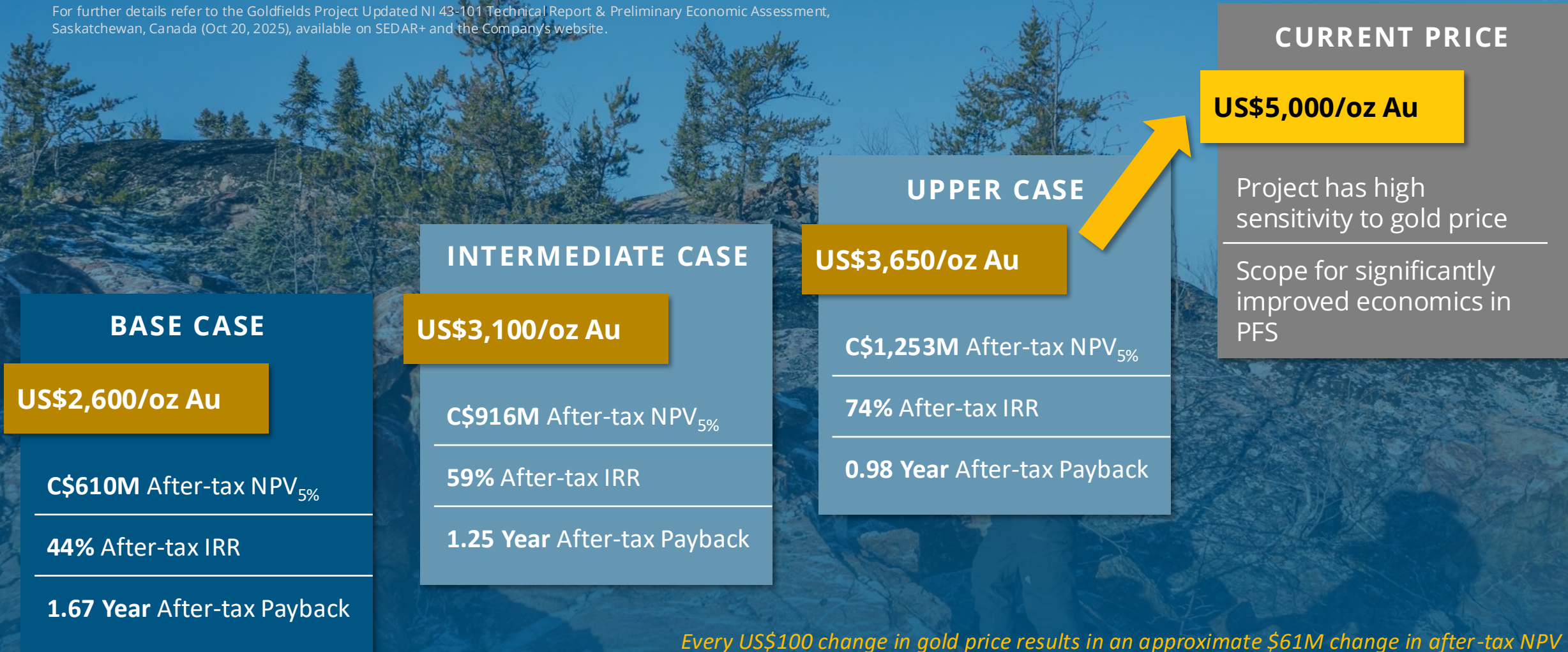
Premier Jurisdiction

- ▶ Saskatchewan ranks #1 in Canada and #7 globally for mining investment attractiveness (Fraser Institute, 2024)



Updated PEA: Exceptional Economics, Highly Sensitive to Gold Price

For further details refer to the Goldfields Project Updated NI 43-101 Technical Report & Preliminary Economic Assessment, Saskatchewan, Canada (Oct 20, 2025), available on SEDAR+ and the Company's website.








C\$301M
Initial CAPEX

US\$1,330/oz
LOM AISC

4,950 tpd
Throughput

14 Year
Mine Life

Expedited Path to Production

 In-Province Permitting	 Building Upon Valid 2008 EIS	 Additional Permitting Underway	 Well-Developed Community Relationships	 Commenced Development Engagement
4,950 tpd open-pit scenario Designed to remain within provincial permitting	Additional approvals to address: 1) Time-lapse since 2008 EA work 2) Changes in project footprint (Athona open-pit + larger WRSF & TSF)	Environmental baseline studies initiated H1 2025 Regulatory engagement planned in early 2026	Exploration Agreement (Nov 2022) with consent up to and including Definitive Feasibility Study	Engagement for a mine development commenced in Q4 2025 MOU / IBA discussions underway

For further details refer to the Goldfields Project Updated NI 43-101 Technical Report & Preliminary Economic Assessment, Saskatchewan, Canada (Oct 20, 2025), available on SEDAR+ and the Company's website.



Open-Pit Constrained Mineral Resources



► An updated MRE was completed as part of the Updated PEA by SRK

Goldfields Mineral Resource Statement, effective date September 11, 2025

Deposit	Category	Tonnes (Mt)	Au Grade (g/t)	Total Au (000's oz)
Box	Indicated	16.2	1.41	734.3
Athona	Indicated	7.8	1.02	255.4
Total Indicated		24.0	1.28	989.6
Box	Inferred	3.4	1.04	114.1
Athona	Inferred	4.0	0.78	100.1
Total Inferred		7.4	0.90	214.2

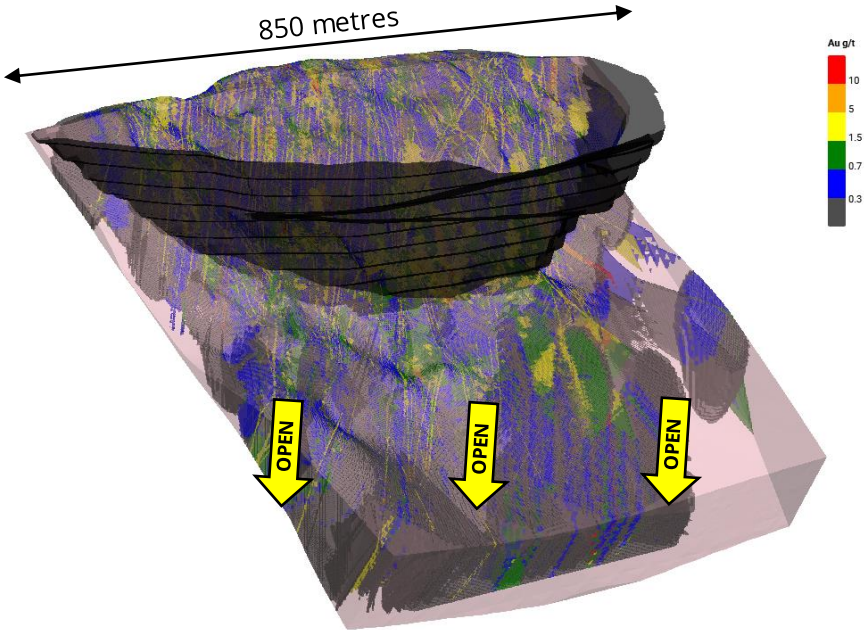
- Notes:
- Mineral resources are not mineral reserves and do not have demonstrated economic viability.
 - Mineral resources are reported at a cut-off grade of 0.28 g/t gold, constrained within a conceptual open-pit shell.
 - Mineral resources are reported based on an updated gold price of US\$2,600/oz.
 - All figures are rounded to reflect the relative accuracy of the estimate.

Reconciles to within 1% of historical mine production

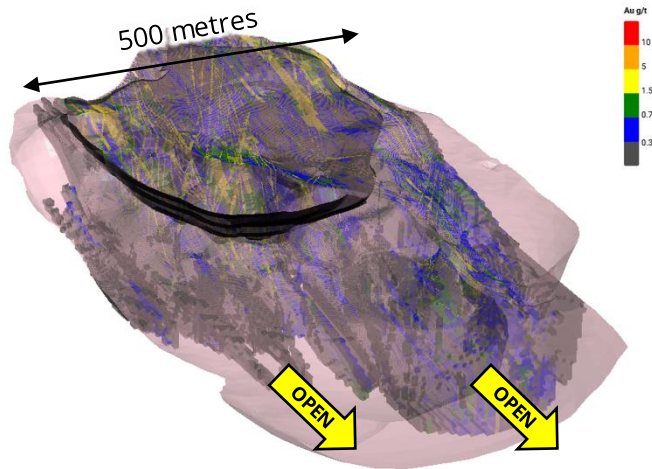
97% Indicated Resources included in Updated PEA mine plan

Among highest-grade open-pit developments in the Americas¹

Box Resource Model, Updated PEA Pit – Looking North



Athona Resource Model, Updated PEA Pit – Looking Northeast



1. Average gold grades for open-pit mineral reserves and resources for projects in the Americas is sourced from S&P Capital IQ. For further details refer to the Goldfields Project Updated NI 43-101 Technical Report & Preliminary Economic Assessment, Saskatchewan, Canada (Oct 20, 2025) available on SEDAR+ and the Company's website.

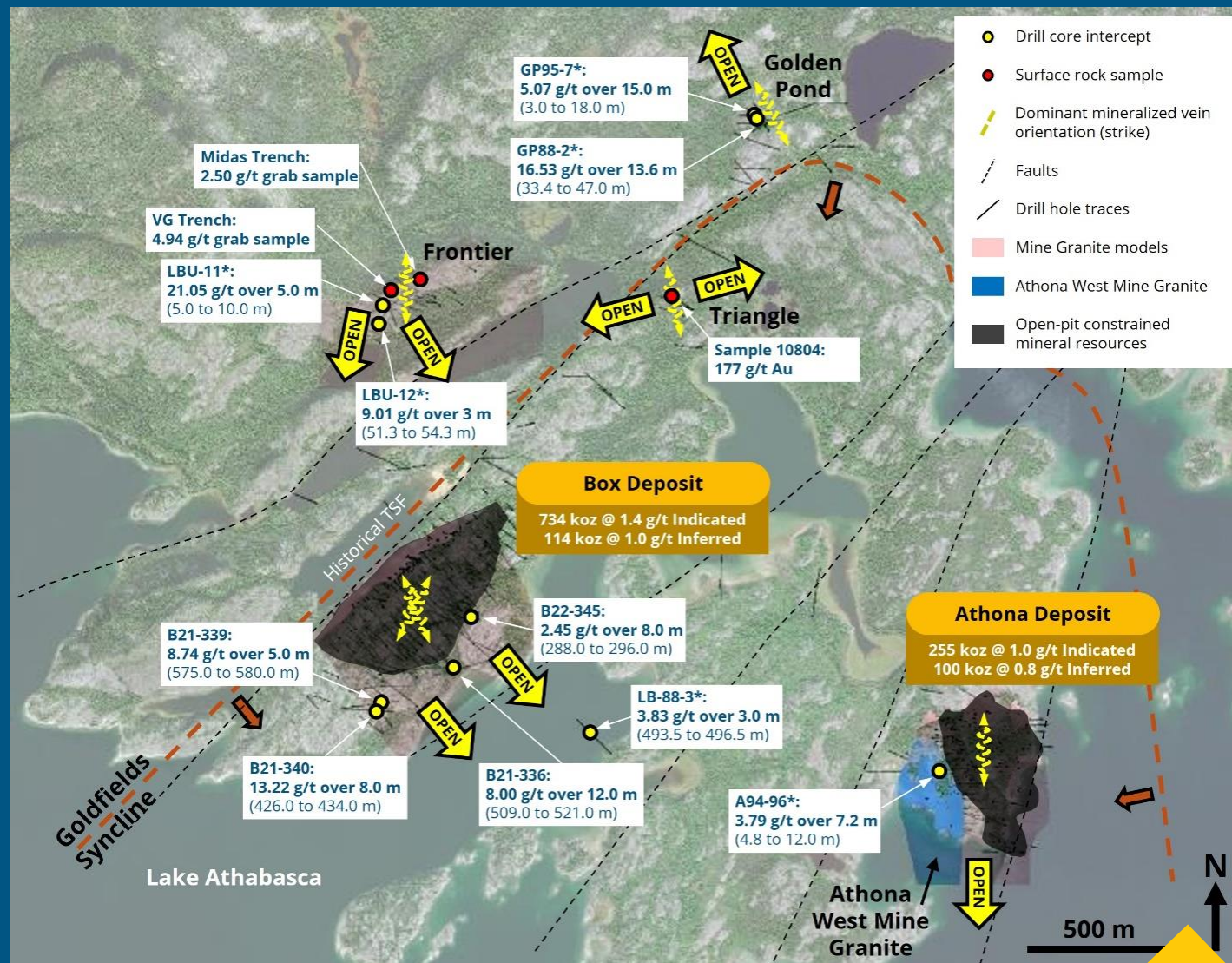
Resource Growth Potential

Resource Growth:

- Potential to expand the current mineral resources through exploration drilling, unlocking additional upside at Goldfields.

Exploration Targets:

- Box (down-dip extensions; underground development potential)
- Athona West (near-surface extensions to open-pit)
- Frontier Lake (shallow resource potential)
- Golden Pond (high-grade, open)
- Triangle (high-grade, open)



For further details refer to the Goldfields Project Updated NI 43-101 Technical Report & Preliminary Economic Assessment, Saskatchewan, Canada (Oct 20, 2025), available on SEDAR+ and the Company's website.

*Historical results have not been verified and there is a risk that any future confirmation work and exploration may produce results that substantially differ from the historical results. The Company considers these results relevant to assess the mineralization and economic potential of the property. Drill hole mineralized intersections are lengths downhole and not true thicknesses.

Plans to Unlock Value

1. Mineral Resource Growth: Exploration Drilling

- ▶ Initial 3,250 m planned (15–20 holes) to test growth potential beyond the Updated PEA mine plan
- ▶ Drilling commenced November 2025. Initial drill results expected Q1 2026.

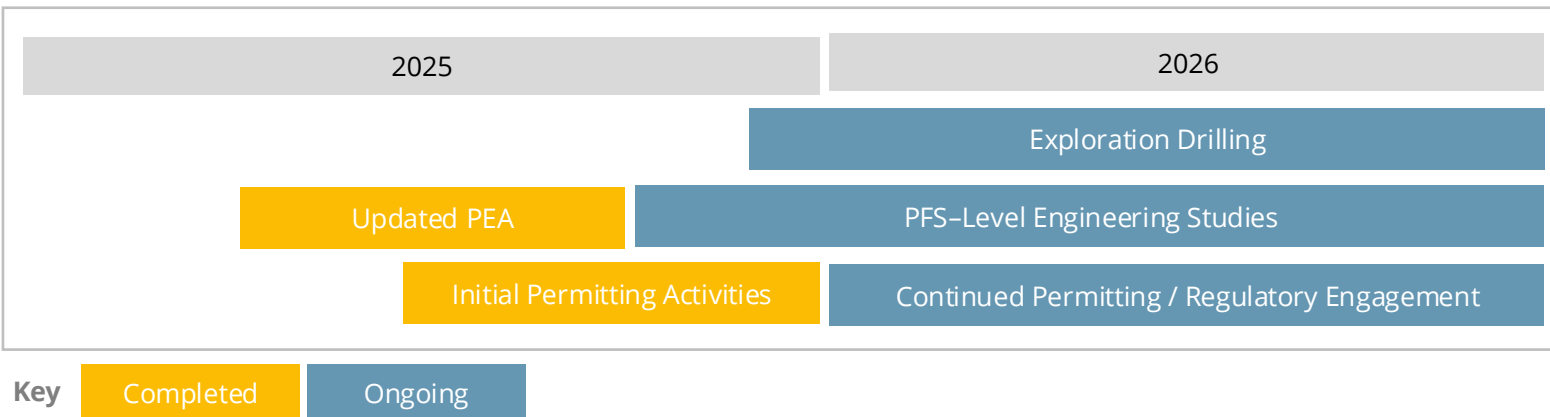
2. Pre-Feasibility Study

- ▶ De-risking engineering studies, leveraging extensive historical datasets
- ▶ Work commenced on engineering studies and PFS planning in November 2025

3. Permitting

- ▶ Completed baseline studies to support regulatory engagement in 2026
- ▶ Continuing proactive community engagement under the current Exploration Agreement. Initial project development meetings completed in Q4 2025

Project Timeline



The timeline presented here is forward-looking in nature and investors are advised to refer to the forward-looking statements contained in this presentation (slide 2) for additional details, or to contact the Company with any questions. The Company undertakes no obligation to update or revise forward-looking statements except as required by applicable securities laws



Why Invest?

Pure-Play Gold Leverage

Corporate focus on advancing Goldfields and unlocking value.

Lean Structure, High Per-Share Torque

Tight share count, strong insider ownership, disciplined capital allocation.

Proven Team

Experienced leadership with a track record of discoveries, project development, and value creation.

Compelling Valuation

Trading at a steep discount to Goldfields' PEA value and peer developers, offering exceptional re-rating potential.

Thank you

Scan for more information



Tel: +1 902-334-1919
info@fortunebaycorp.com
www.fortunebaycorp.com

Follow our Social Channels



TSXV: **FOR** | FWB: **5QN** | OTCQB: **FTBYF**



APPENDIX

Pipeline & Partner-Funded Projects

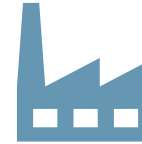
Updated PEA: Mine Design and Production



3:1 Strip
Waste : Resource



25.2 Mt
Total Mill Feed

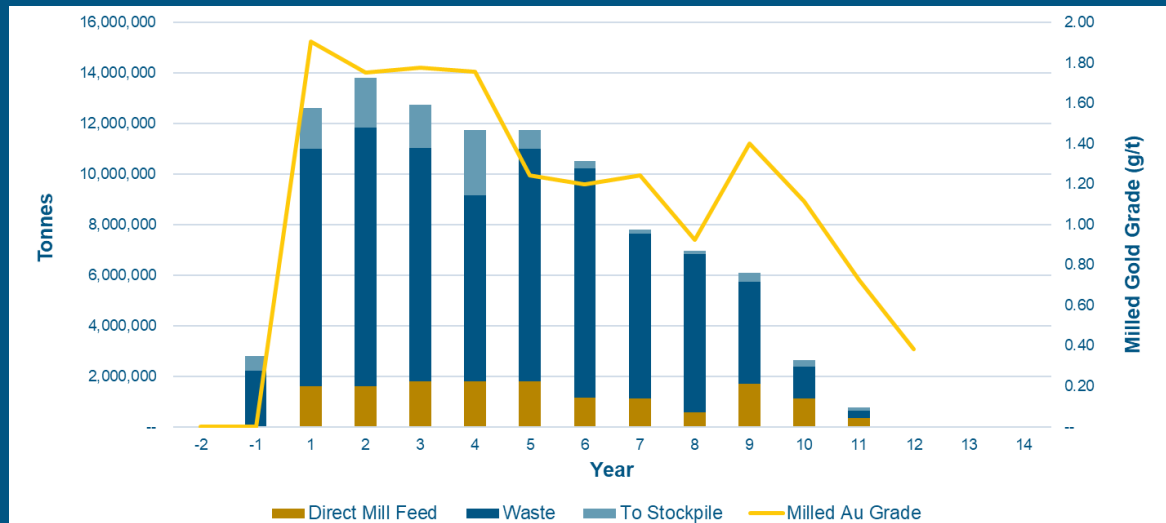


1.2 g/t Au
Mill Head Grade

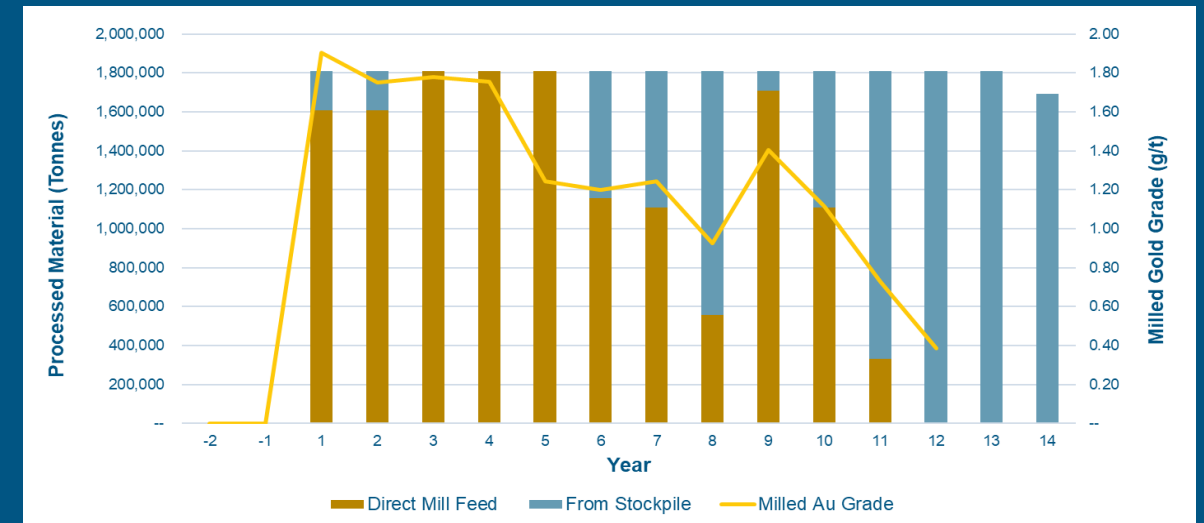


896 koz
Total Payable Gold

Mine Plan Summary



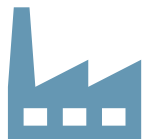
Mill Feed Summary



Updated PEA: Metallurgy & Mineral Processing

SIMPLE MINERALOGY, FREE MILLING GOLD

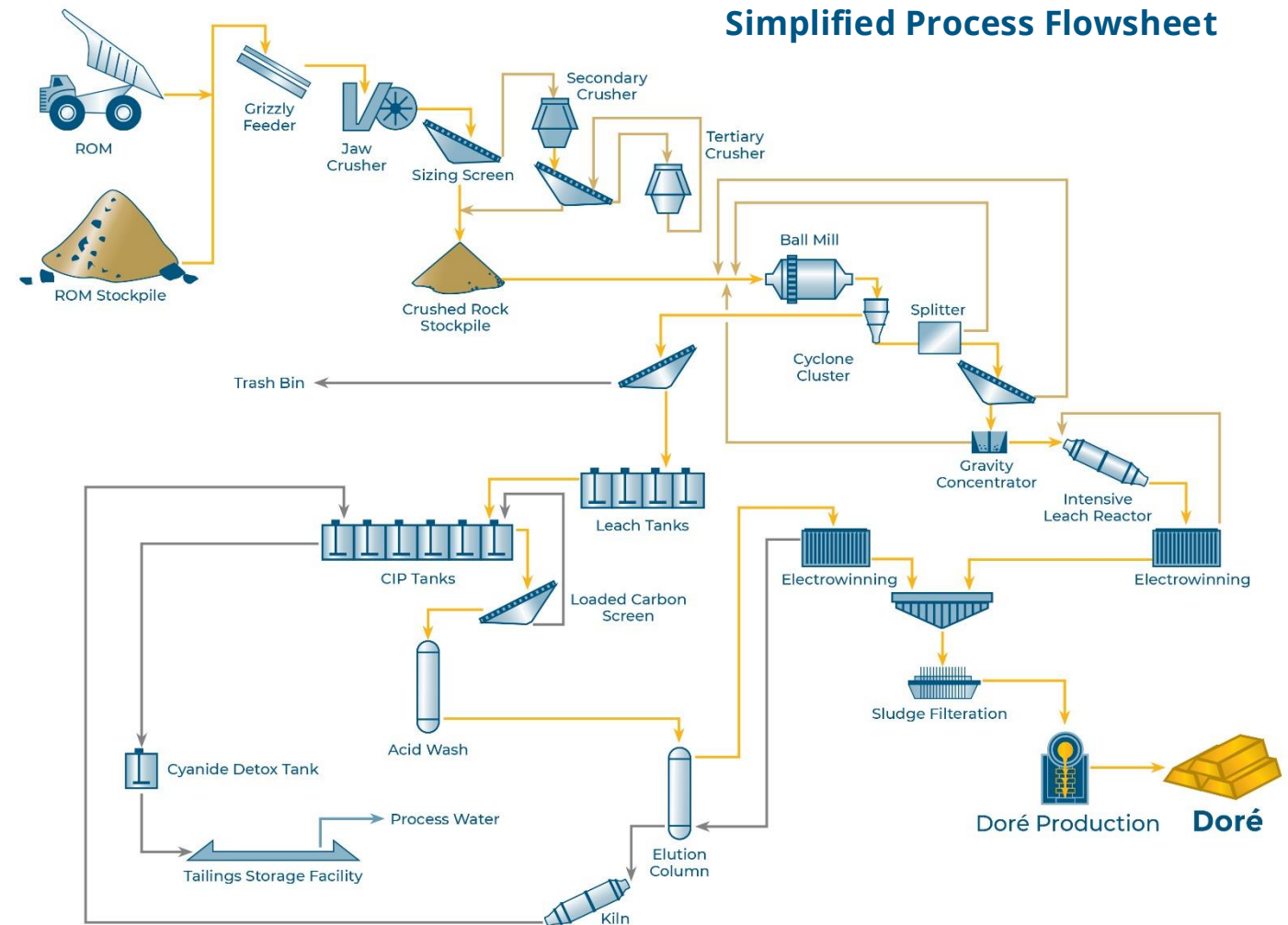
- ▶ Extensive metallurgical testwork dating back to 1939
- ▶ No significant metallurgical or environmental hindrances associated with the mineralization
- ▶ Key process design criteria derived from testwork conducted at SGS in 2015
- ▶ Process plant employs gravity concentration, and standard leaching with carbon-in-pulp ("CIP") technology for gold recovery
- ▶ **24.5%** gravity extraction, **70.8%** by leach/CIP process



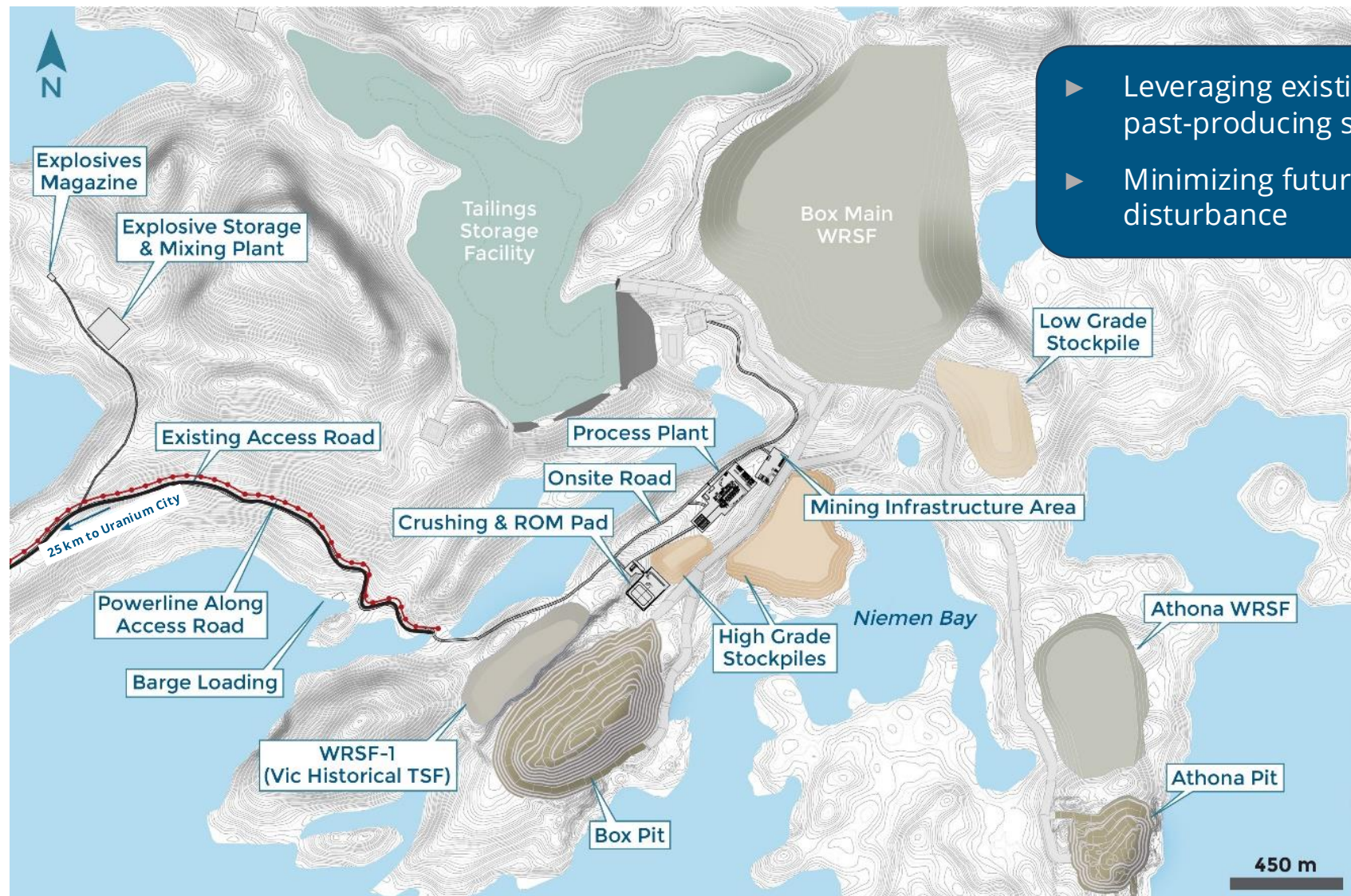
4.95 ktpd
Mill Throughput



95.4%
Average Gold Recovery



Updated PEA: Site Infrastructure



- ▶ Leveraging existing infrastructure & past-producing status
- ▶ Minimizing future footprint and disturbance



Top-tier Copper-Gold Potential

Poma Rosa Project, Chiapas State, Mexico

- ▶ Historical Campamento resource: 1.04 Moz Au (M&I) + 0.70 Moz Au (Inferred)
- ▶ Located in Chiapas, Mexico with road, rail, and airport access
- ▶ 100% owned with no royalties or encumbrances
- ▶ Geological setting parallels most of the giant porphyry deposits worldwide
- ▶ Focused on advancing regulatory clarity and stakeholder engagement to support future exploration and development

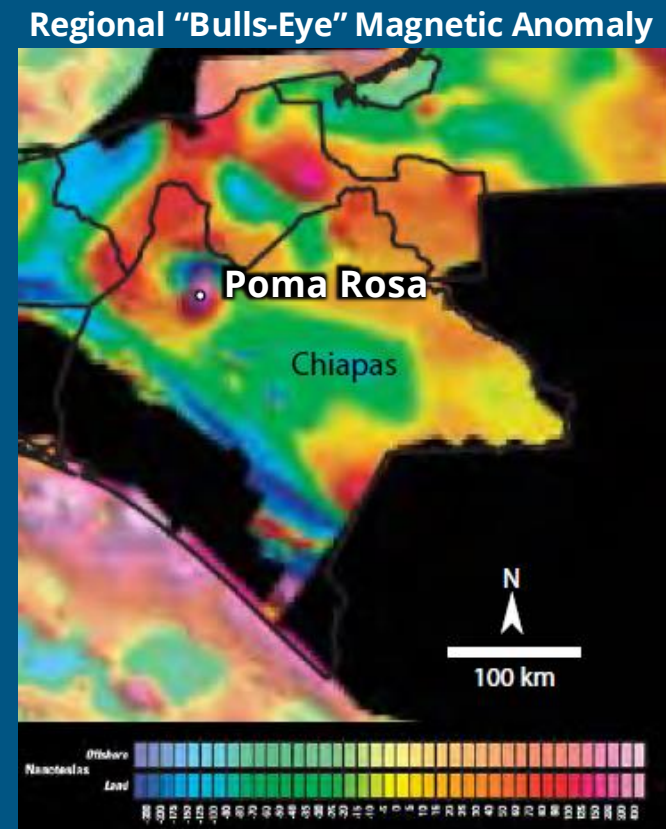
Mendicino Fracture Zone

RIO TINTO
Bingham Canyon, USA
3.2 GT @ 0.88% Cu

FORTUNE BAY
Poma Rosa, Mexico
1.7 Moz historical gold resource
Porphyry Cu-Au target not evaluated

Cobra Panama
4.3GT M&I @ 0.47% Cu eq

Cascabel, Ecuador
2.7GT M&I @ 0.53% Cu eq.



Poma Rosa sits in a geological setting proven to host world-class copper-gold porphyry deposits

Tehuantepec Ridge

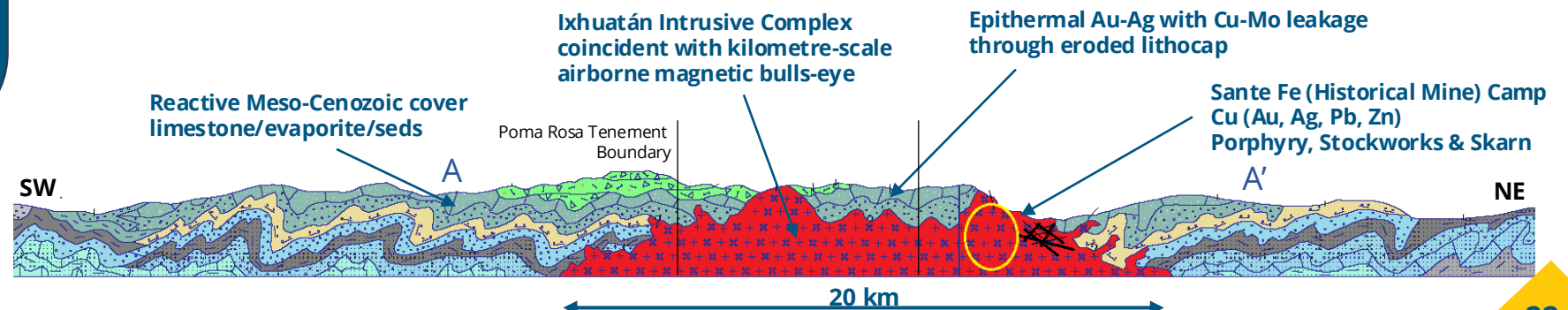
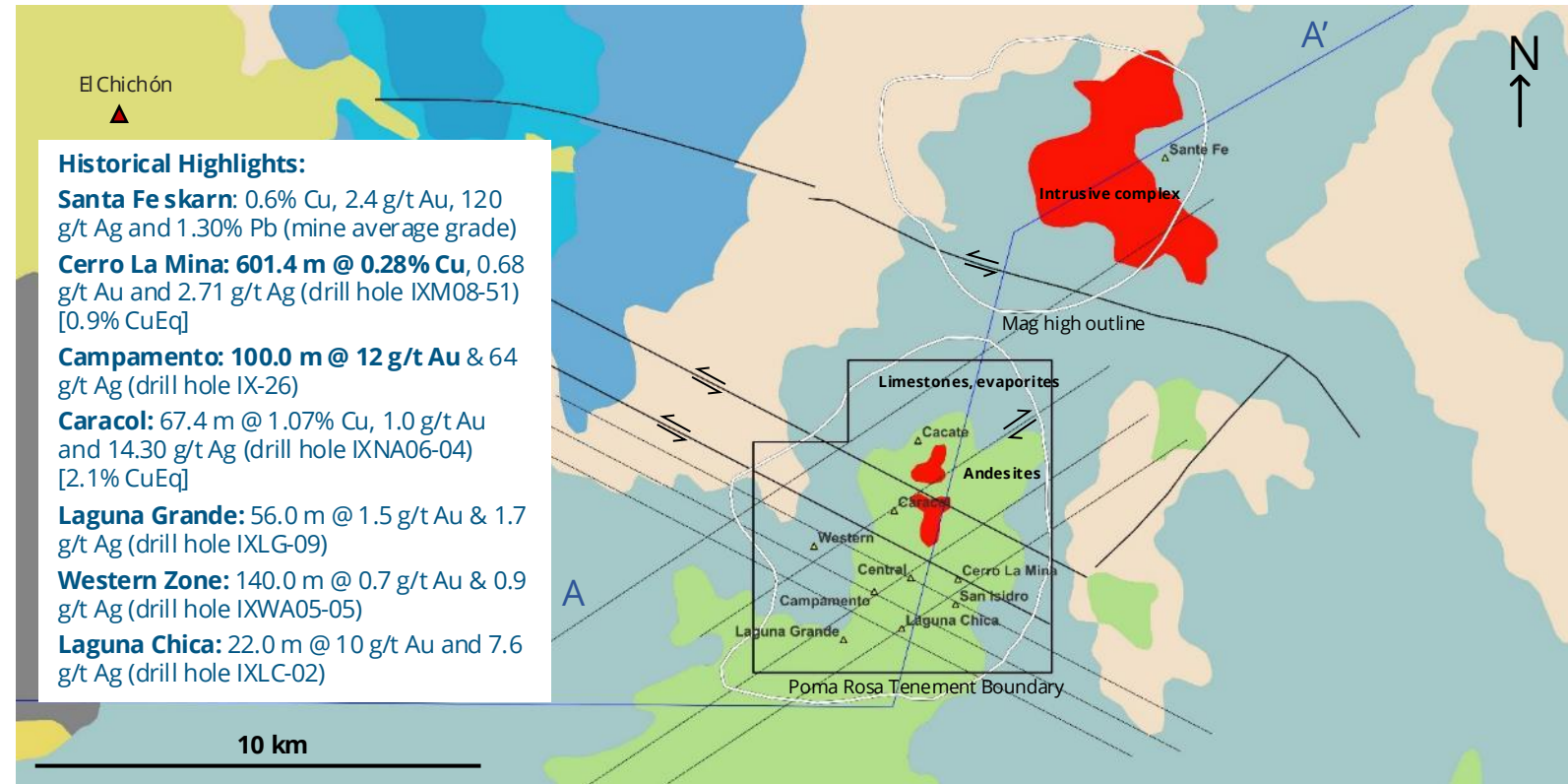
Cocos Ridge

Carnegie Ridge

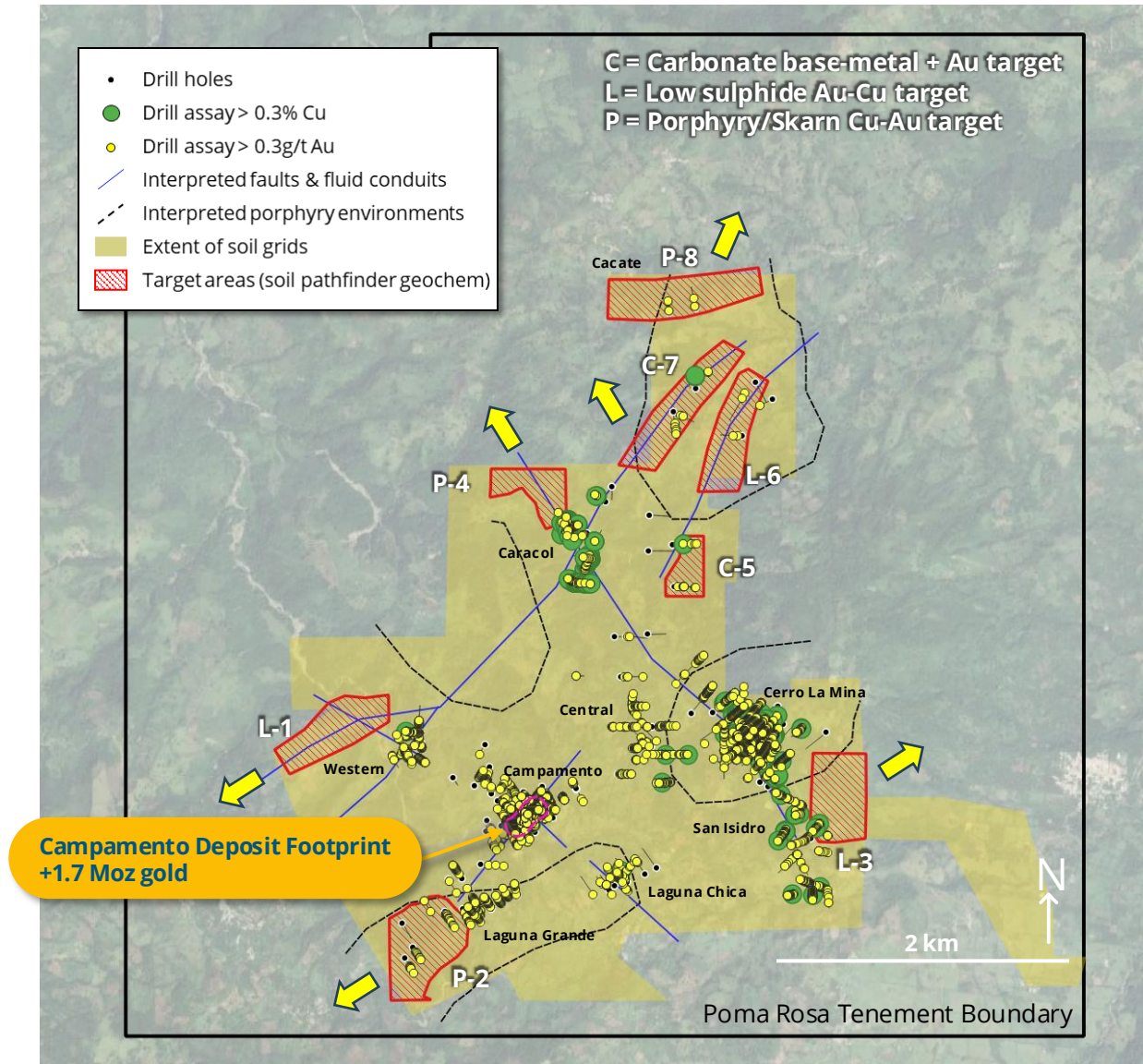
Potential for Major Copper-Gold Discovery

- ▶ Favorable tectonic setting - subduction of a major aseismic ridge
- ▶ Thin reactive cover rocks (limestone and anhydrite-halite)
- ▶ Favorable structural architecture

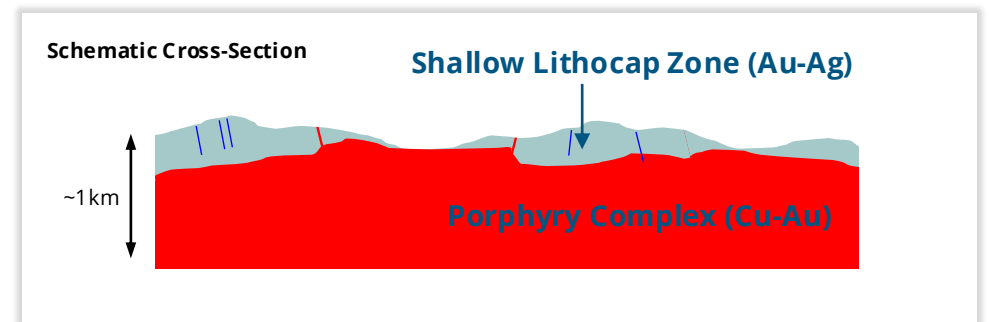
- ▶ Significant metal endowment with almost all drill holes to date intersecting Au and/or Cu mineralization
- ▶ Target-rich environment remains underexplored
- ▶ Mineralization discovered to date is characteristic of the upper portion of a district-scale Cu-Au-Ag-Mo mineralizing system



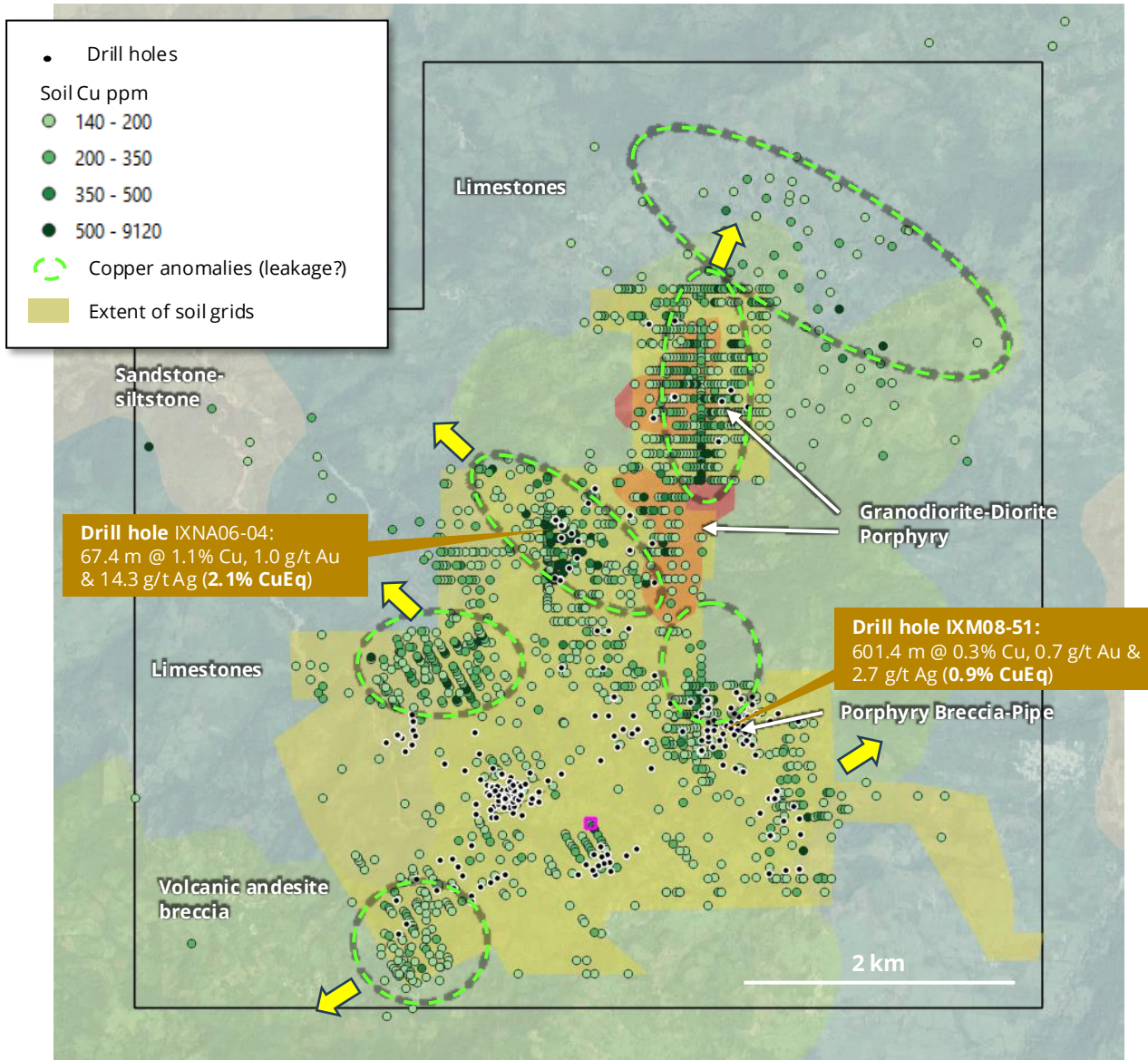
Multiple Opportunities



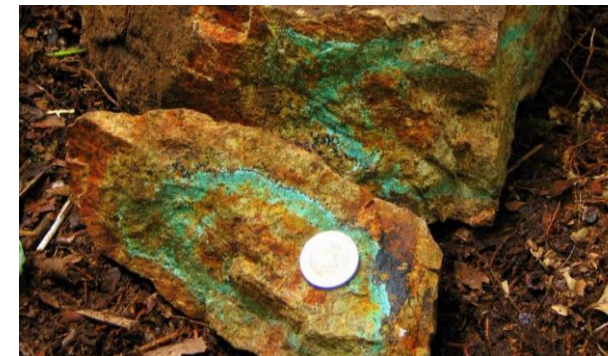
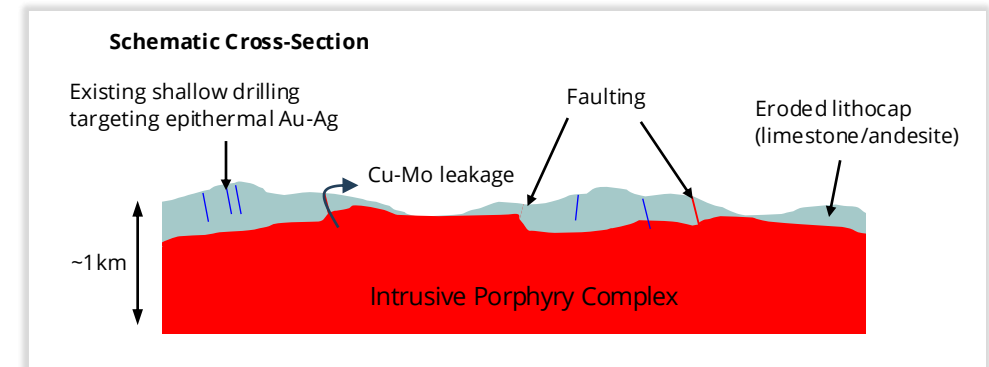
- **Resource Definition & Expansion**
 - NI 43-101 Resource Estimation (Campamento & Cerro La Mina)
 - Resource expansion
- **Project Development**
 - Campamento PEA
- **Exploration: Shallow Lithocap Zone (Au-Ag)**
 - Existing targets: Central, Caracol, San Isidro, Laguna Chica, Laguna Grande, Western, Cacate
 - Eight new gold-copper target areas defined based on soil geochemistry (modern geophysics will significantly upgrade target inventory)
- **Exploration: Porphyry Complex (Cu-Au)**
 - Large porphyry system across entire tenement (both in outcrop and beneath shallow cover sediments)
 - Skarns associated with limestones (primarily northern & western areas)



Unexplored Copper Potential



- ▶ Previous exploration focused on gold in the lithocap cover rocks (soil sampling followed by drilling)
- ▶ Strong copper mineralization at Cerro La Mina, Caracol & Santa Fe – large copper system
- ▶ Numerous untested soil copper anomalies; incomplete soil sample coverage
- ▶ Modern geophysics & deeper drilling required



Malachite staining, Northern Zone

Mineral Resource Potential

Campamento

Historical Mineral Resources (0.5 g/t cut-off)

M+Ind

1.04 Moz gold @ 1.8 g/t
4.4 Moz silver @ 7.8 g/t

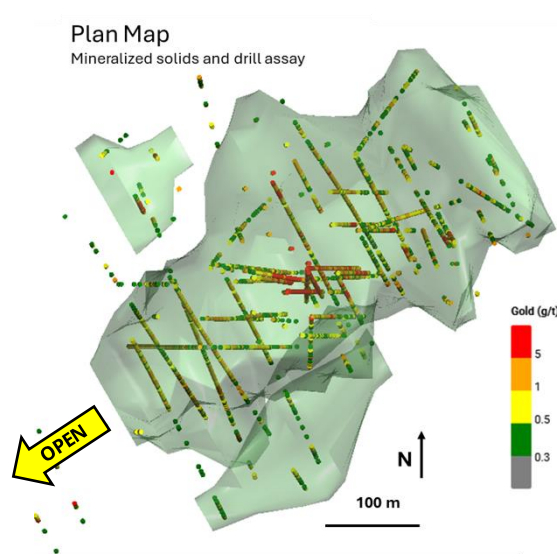
Inf

0.70 Moz gold @ 1.0 g/t Au
2.3 Moz silver @ 3.2 g/t Ag

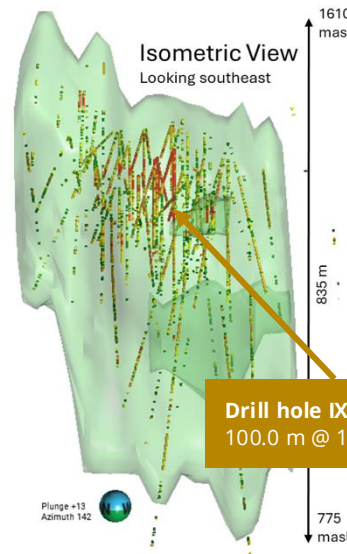
Mineralized shells (>0.3 g/t Au) shown in green. Gold grade > 0.3 g/t shown

Plan Map

Mineralized solids and drill assay



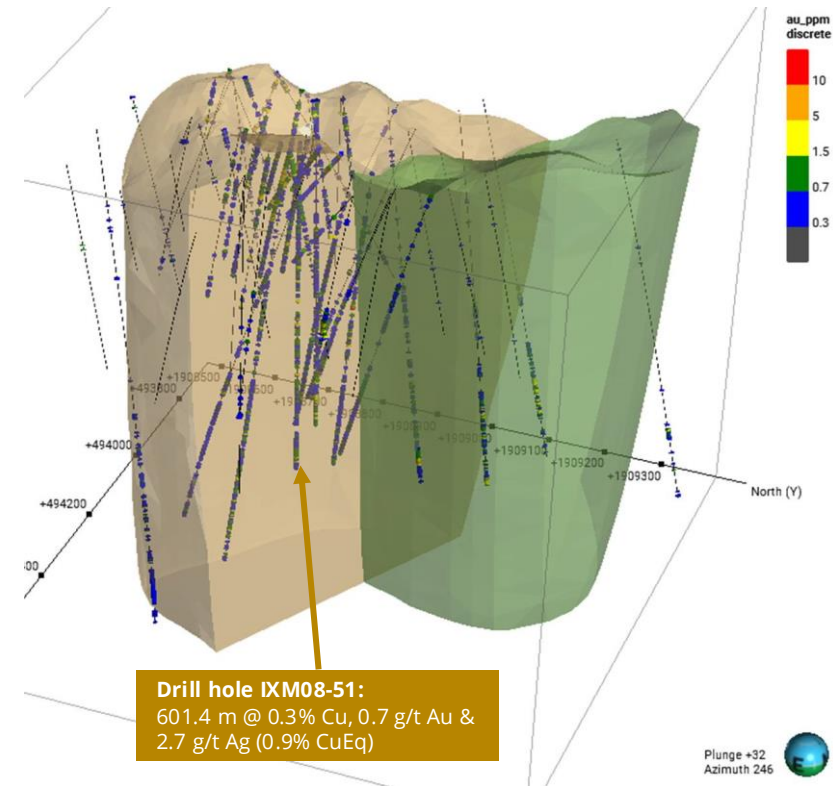
Isometric View
Looking southeast



Drill hole IXM08-51:
100.0 m @ 12 g/t Au

Cerro La Mina

- ▶ No NI 431-10 resources estimated to date.
- ▶ Drill spacing has potential to support a future Inferred Mineral Resource Estimate



Drill hole IXM08-51:
601.4 m @ 0.3% Cu, 0.7 g/t Au &
2.7 g/t Ag (0.9% CuEq)

Simplified schematic pipe model based on historical plan maps of geology

Project Status

- ▶ The Government of Chiapas established a new state-level protected natural area (“Mina Banderas”) in November 2025 that overlaps ~11% of Fortune Bay’s Rio Negro concession, including part of the Campamento gold-silver deposit and nearby targets.
- ▶ Fortune Bay holds the Rio Negro concession through its wholly owned Mexican subsidiary, and the concession remains valid and in good standing under federal Mexican mining law.
- ▶ In response to the overlap, the Company filed an amparo (constitutional challenge) in federal court to protect its concession rights and challenge the application of the state decree on procedural and constitutional grounds.
- ▶ No immediate operational or financial impact is expected; the main uncertainty relates to potential timing delays while the legal process unfolds.
- ▶ 2025 community engagement has progressed well, with substantive discussions and negotiation of exploration agreements with local landowners to support resumption of field exploration.
- ▶ Poma Rosa remains a pipeline growth asset, with value preservation actions underway while the Company prioritizes advancement of Goldfields.

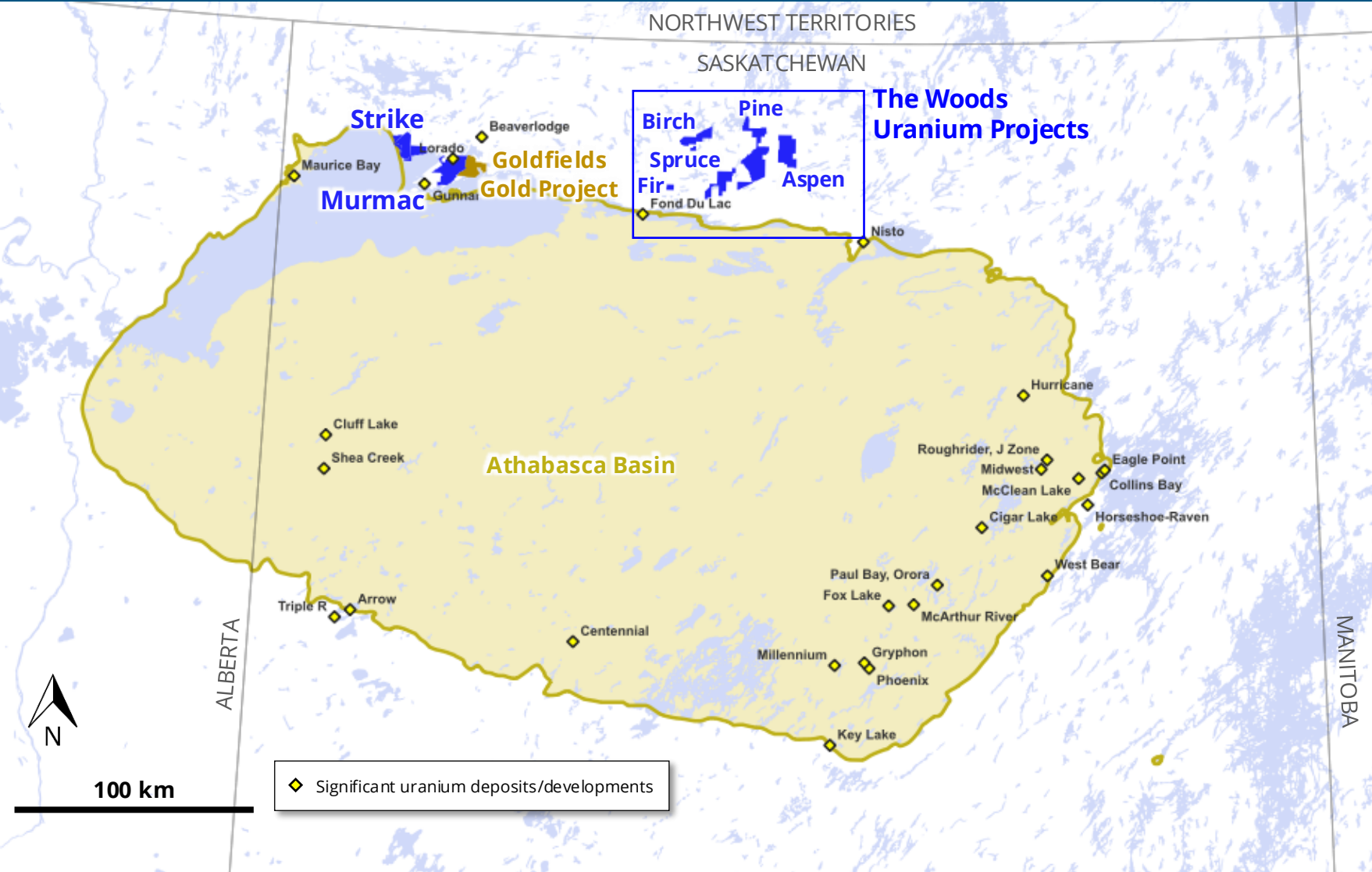




Uranium Projects, Saskatchewan

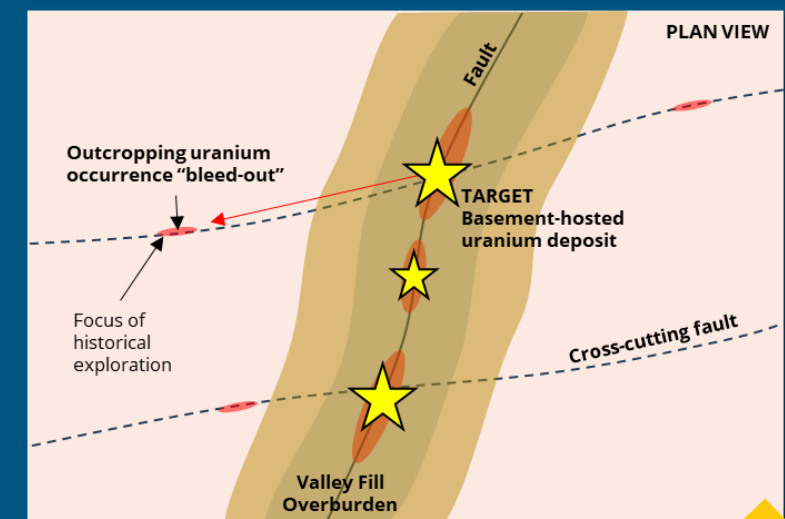
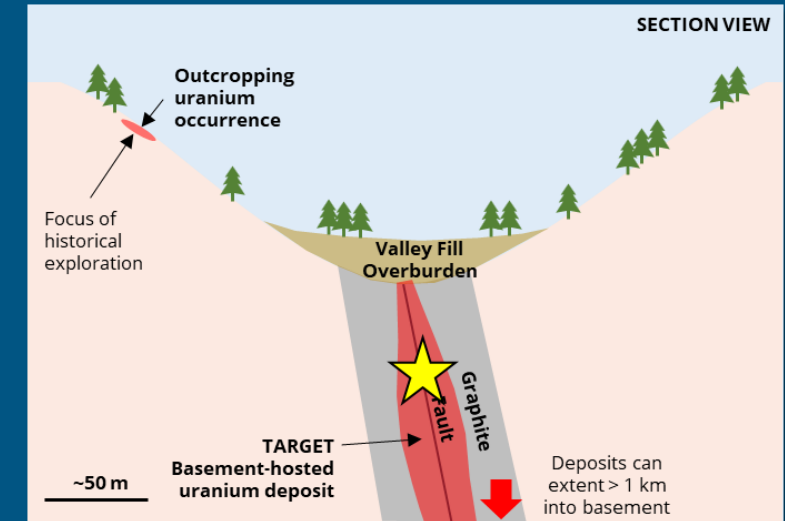
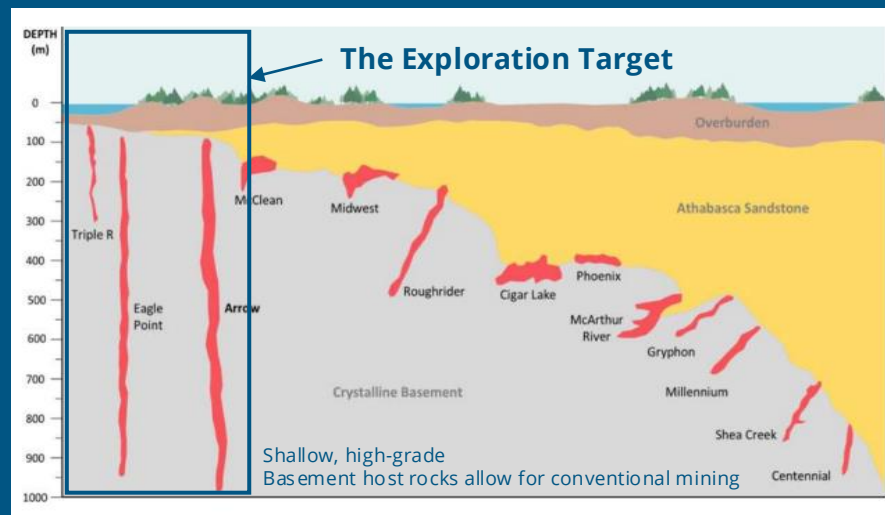
- ▶ Partner-funded exploration retaining upside for shareholders (currently 100% owned)
- ▶ Targeting high-grade Athabasca Basin basement-hosted deposits
- ▶ Favorable geology & structure
- ▶ Numerous high-grade (>1% U_3O_8) surface showings
- ▶ Recent drilling discovery of 0.30 % U_3O_8 over 8.40 m including grades up to **13.80 % U_3O_8** , hosted in structured graphitic rocks

High-Potential, Partner-Funded Uranium Projects



Validated Uranium Targeting Concept

- ▶ Targeting **high-grade basement-hosted deposits** immediately outside present-day Athabasca Basin margin (e.g. Arrow, Triple R, Eagle Point)
- ▶ Deposits are associated with graphite-rich basement rocks (EM conductors) and major structures
- ▶ Outside of the Basin these deposits would lie in topographical lows and be covered by sediments and small lakes
- ▶ Historical exploration (1960's-1970's) on northern Basin margin targeted Beaverlodge-type deposits in outcropping granitic rocks – exploration methods used are ineffective for basement-hosted deposits
- ▶ Opportunity to apply modern geophysical approach (helicopter-borne high-resolution EM) to map and target EM conductors
- ▶ **Targeting concept has been validated at Strike and Murmac**, including drill intersections of uranium mineralization **up to 13.80% U_3O_8 over 0.1m in structured graphitic rocks**



Murmac & Strike - Poised for Shallow, High-Grade Discovery

Historical:

- ▶ Over 70 Mlbs U_3O_8 produced in Uranium City area
- ▶ Graphitic corridors not targeted (favored hosts for high-grade)
- ▶ Numerous high-grade ($>1\%$ U_3O_8) surface showings

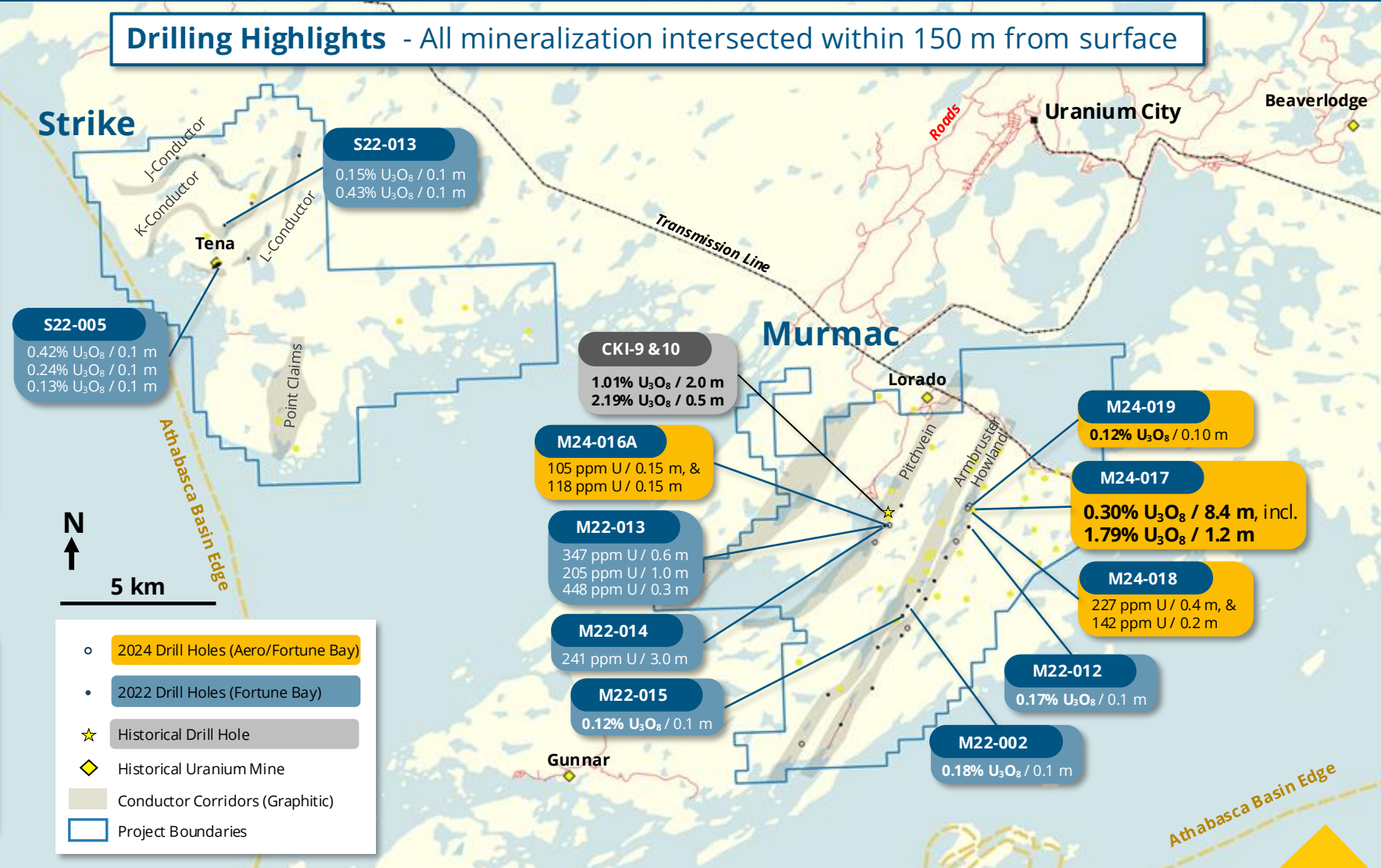
Fortune Bay Drilling:

- ▶ Results confirm unconformity-related (Athabasca-style) high-grade mineralizing systems
- ▶ Several mineralized zones discovered for follow-up drilling
- ▶ Numerous regional targets identified to be drill tested
- ▶ Over 70 km's of prospective strike length

Under Option:

- ▶ Aero Energy (TSXV: AERO) earn-in to 70% (3.5 years)
 - ▶ C\$6M exploration expenditures
 - ▶ C\$1.35M cash payments
 - ▶ C\$2.15M common shares

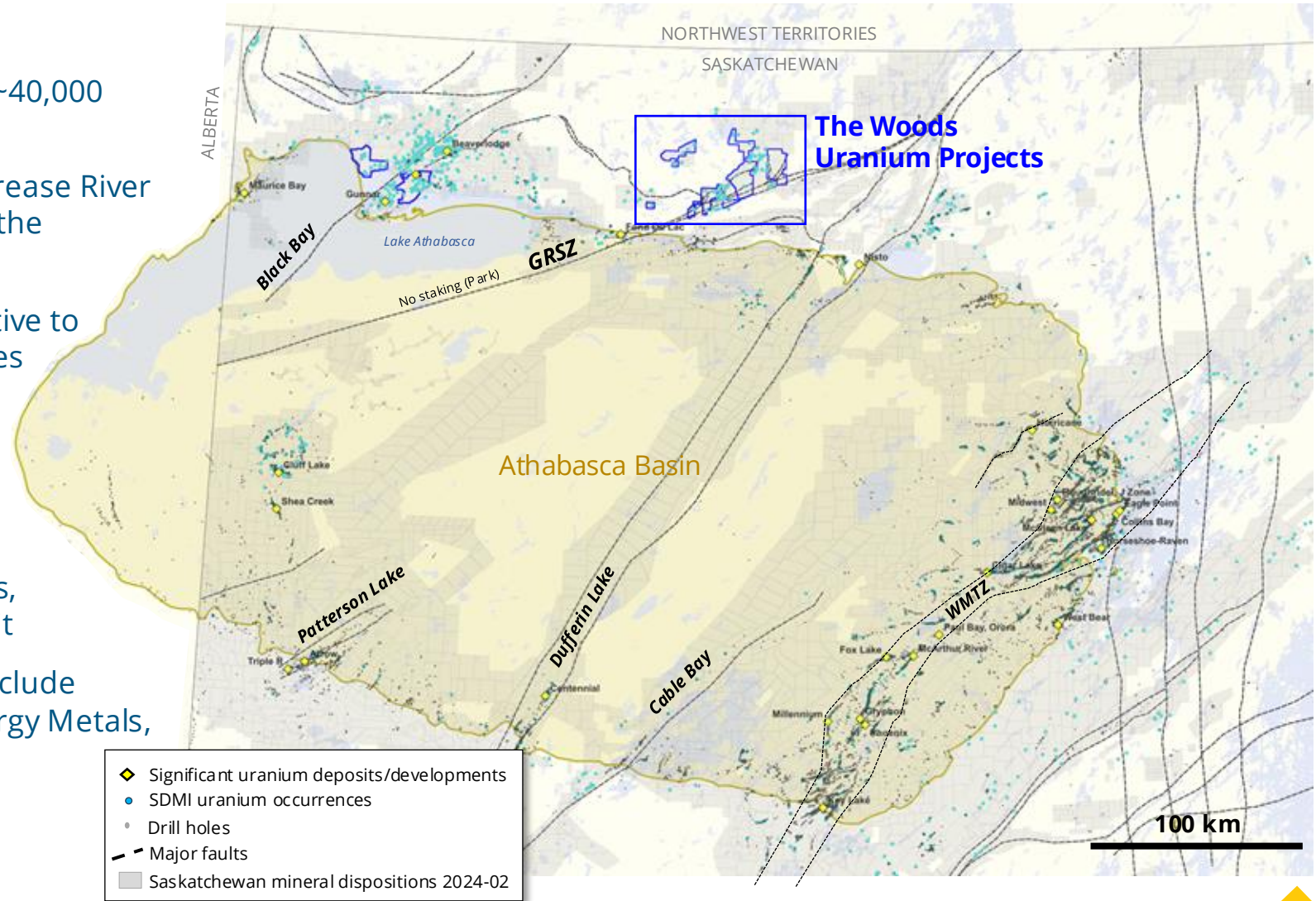
Drilling Highlights - All mineralization intersected within 150 m from surface



A New Frontier for Uranium Discovery

The Woods Uranium Projects

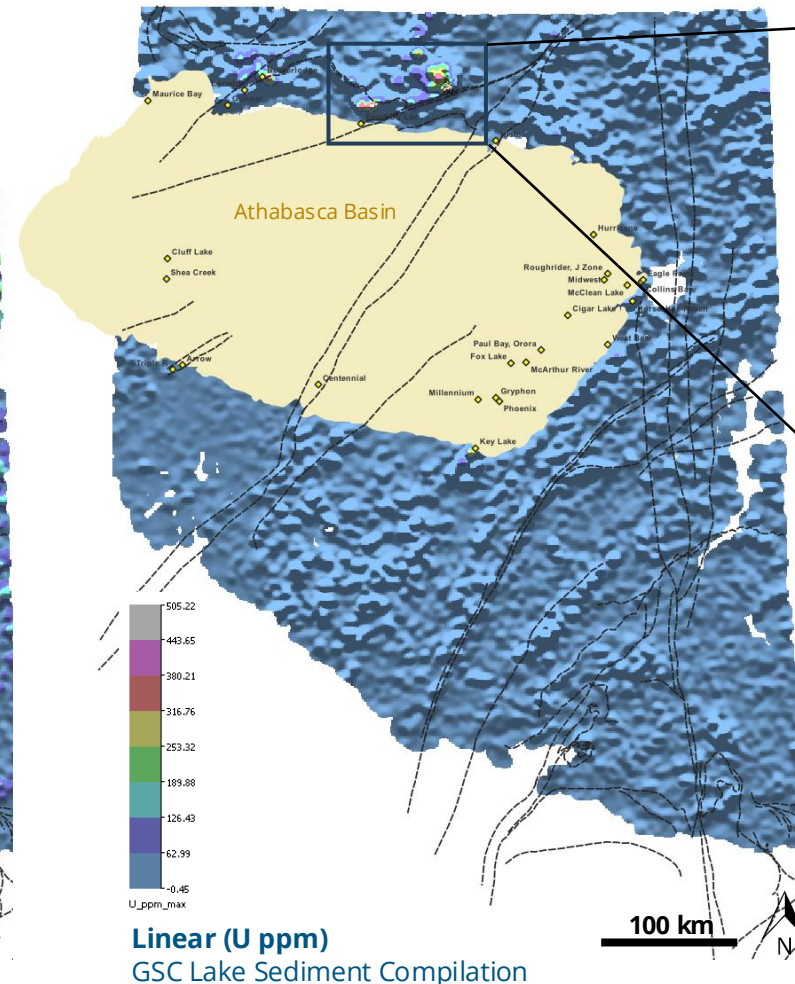
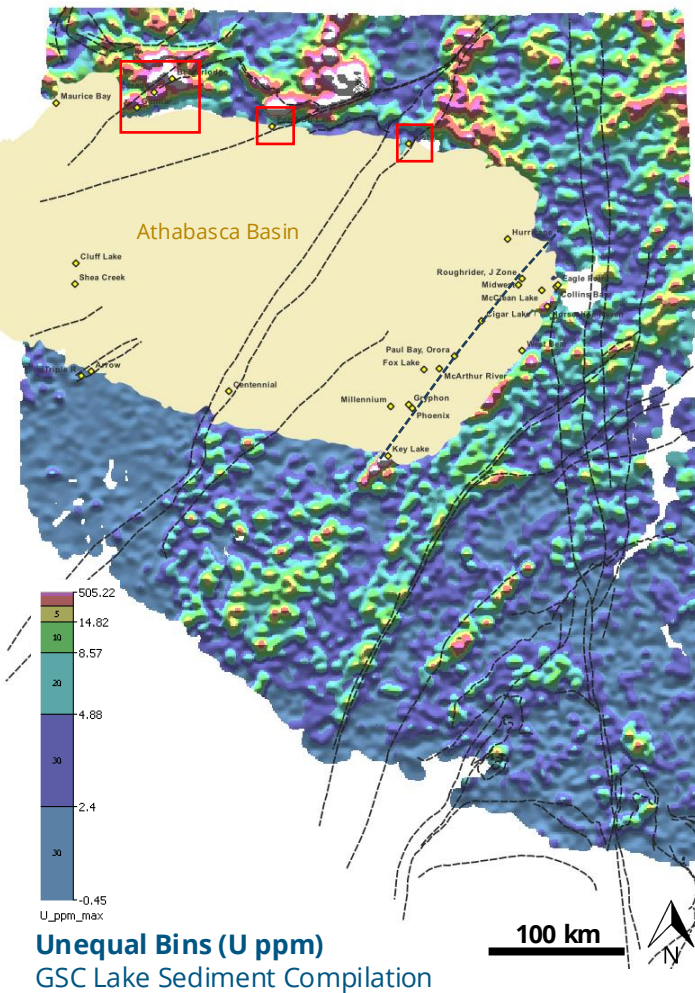
- ▶ District-scale opportunity (5 projects, ~40,000 hectares)
- ▶ A dominant land position along the Grease River Shear Zone ("GRSZ") within 30 kms of the Athabasca Basin margin
- ▶ GRSZ significantly underexplored relative to other major Athabasca Basin structures (<20 drill holes NE of Fond du Lac)
- ▶ Prospective geology and structure for high-grade, basement hosted deposits
- ▶ Abundant historical uranium showings, including Fond du Lac uranium deposit
- ▶ GRSZ fully staked – other operators include Denison Mines, IsoEnergy, Forum Energy Metals, ALX Resources, Power Metals



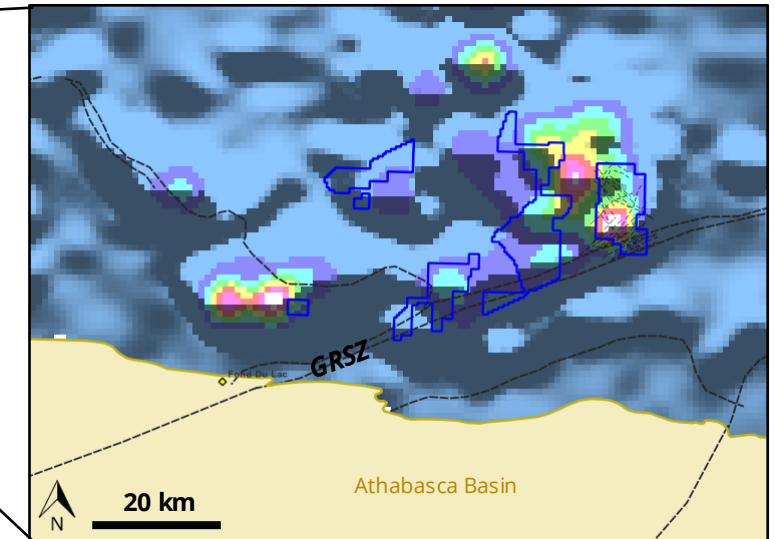
The Woods - Highest Lake Sediment U Anomalies in Saskatchewan

Lake sediment uranium anomalism correlates with major structures & known deposits

Extreme uranium anomalism in The Woods Projects area



The Woods Uranium Projects



- ▶ Highest uranium lake sediment sample within Geological Survey of Canada ("GSC") compilation at Aspen Project, Perron Lake (**989 ppm**)
- ▶ Extreme anomalism along and north of the GRSZ provides support for discovery

The Geological Survey of Canada Lake Sediment Compilation (available for download at: <https://gisappl.saskatchewan.ca/Html5Ext/index.html?viewer=GeoAtlas>). Historical results have not been verified and there is a risk that any future confirmation work and exploration may produce results that substantially differ from the historical results. The Company considers these results relevant to assess the mineralization and economic potential of the property.

The Woods – Potential for Discovery

- ▶ **Significant Uranium Endowment** - Historical exploration identified numerous uranium occurrences of vein- and pegmatite-hosted mineralization indicating potential for basement-hosted and Rössing-style deposits, respectively.
- ▶ **Underexplored** - No appropriate datasets to target high-grade, basement-hosted deposits associated with covered graphitic-rocks and structure. **Only 3 drill holes** over The Woods Projects to date
- ▶ **Favorable Geology & Structure** – Graphitic rocks recorded historically, significant structure along GRSZ and splays to the north

Option Agreement Executed July 2025:

- ▶ Neu Horizons (Australian private) earn-in to 80% (1.5 years)
 - ▶ A\$3M exploration expenditures
 - ▶ A\$50k cash payments
 - ▶ A\$750k common shares

Please see News Released dated May 29, 2025 for further details.

