



DRYDEN

GOLD CORP

TSXV: DRY | OTCQB: DRYGF
WWW.DRYDENGOLD.COM

JUNE 2025

Acknowledgements & Forward-Looking Statements

Dryden Gold Corp acknowledges all Indigenous Peoples and that it is operating on the traditional homelands of the Wabigoon Lake Ojibway Nation and Eagle Lake First Nation.

Certain statements contained herein constitute “forward-looking statements” within the meaning of the applicable Canadian securities legislation. These forward-looking statements are based on current expectations, estimates and projections about the Canadian mining and mineral exploration industry based on management’s beliefs and certain assumptions made by management. Readers are cautioned that such forward-looking statements are not guarantees of future performance and are subject to risks, uncertainties and assumptions that are difficult to predict and the actual results and performance of Dryden Gold Corp. (the “Company”) may differ materially from the results implied by such statements. Readers are cautioned not to place undue reliance on any forward-looking statements. Unless otherwise required by law, the Company also disclaims any obligation to update its view of any such risks or uncertainties or to announce publicly the result of any revisions to the forward-looking statements made here.

This document contains proprietary information that is the property of Dryden Gold Corp. Neither this document, nor the proprietary information contained herein, shall be published, reproduced, copied, disclosed or used for any other purpose, other than the review and consideration of this document.

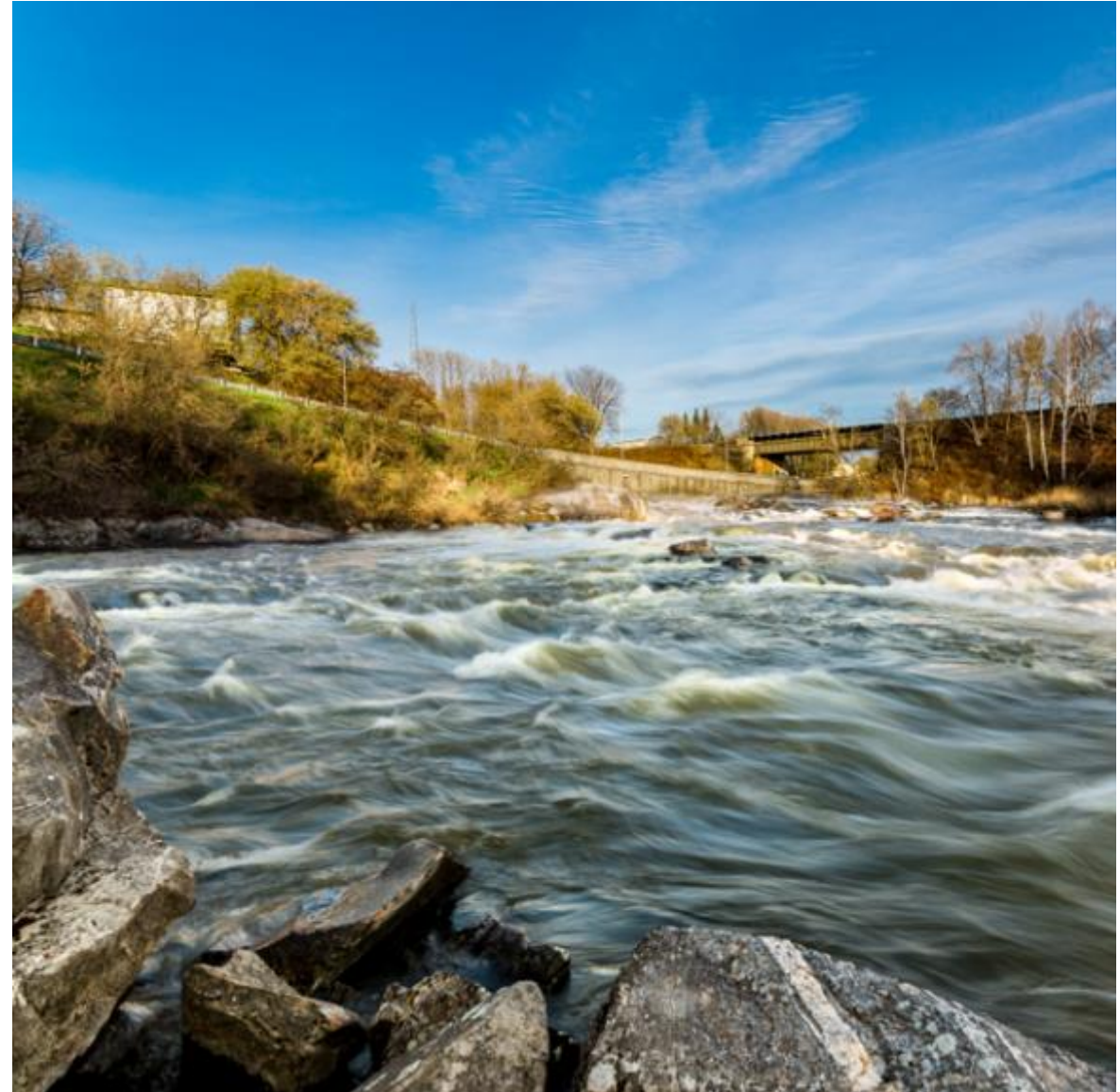
This presentation is not an offer, nor the solicitation of an offer to buy any securities. Such an offer, if made, will be made only through a prospectus or other such document issued in accordance with applicable securities laws, and other applicable laws, rules and regulations., Or pursuant to the applicable exemption from the requirement to deliver a prospectus, in accordance with applicable laws.

Historical statements contained in this document regarding past activities should not be taken as a representation that such trends or activities will continue in the future. In particular, historical results should not be taken as a representation that such trends will be replicated in the future. No statement in this document is intended to be nor may be construed as a profit forecast.

An investment in the Company is speculative and involves substantial risk and is only suitable for investors that understand the potential consequences and are able to bear the risk of losing their entire investment. Investors should consult with their own legal, tax and financial advisors with respect to all such risks before making an investment.

The Company is in the early stage of development and has a limited operational history, making it difficult to accurately predict business operations. The Company has limited resources and may run out of capital prior to becoming profitable. The Company may fail and investors may lose their entire investment.

The technical disclosure in this presentation has been approved by Maura J. Kolb, M.Sc., P.Geo. a Qualified Person as defined by National Instrument 43-101 of the Canadian Securities Administrators.



Key Value Drivers



Experienced Management

History of success in building junior mining companies and navigating M&A to create shareholder value

Technical team has extensive regional experience leading the exploration team at the Red Lake Mine



Investment Upside

High-grade gold across the entire Dryden District

Limited drilling – 30,000 meters

System has never been drilled tested at depth

Regional Greenfield targets at Hyndman & Sherridon

Strategic investment from Centerra Gold



Favourable Mining Jurisdiction

Excellent infrastructure, including grid power

Major highway access and logging roads

Year-round drilling

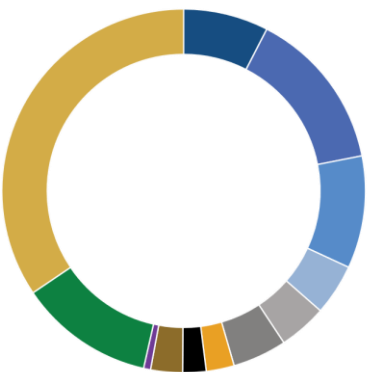
Significant tax benefits and government grants

Collaborative relationships with First Nations communities

DRYDEN
GOLD CORP



MAJOR SHAREHOLDERS



Management & Insiders	7.56%
Centerra Gold Inc.	9.99%
Alamos Gold (NYSE-AGI)	14.34%
EuroPac Gold Fund	4.55%
Medalist Capital	4.26%
Delbrook Capital	4.81%
Eric Sprott	2.49%
Rob McEwen	2.08%
Dynamic Funds	2.83%
Robert Quartermain	0.62%
Other Institutions	12.00%
Public Float	34.47%

SHARE STRUCTURE

Trading Symbols As at May 23, 2025	TSXV: DRY OTCQB: DRYGF
Current Issued and Outstanding	160,362,519
Warrants Outstanding	52,699,986
ESOP Options Outstanding	9,100,000
Fully Diluted	222,162,505
Cash Balance	4,150,000

NEWSLETTER WRITER COVERAGE

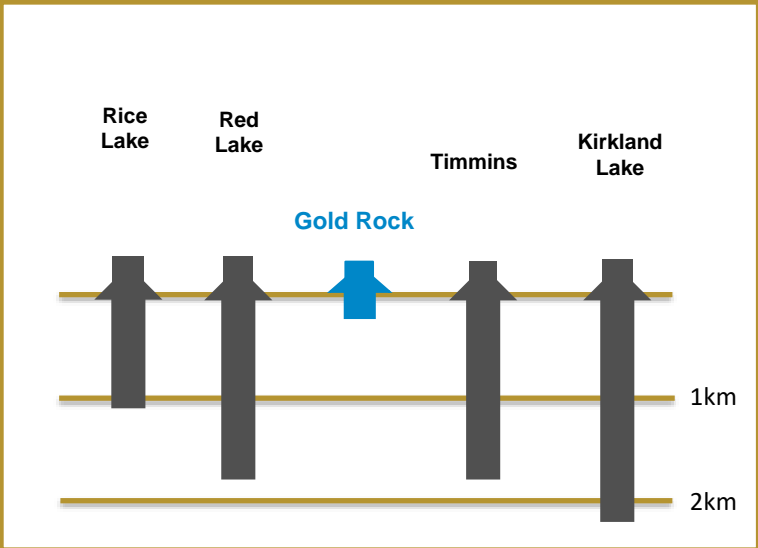
JEFF CLARK
[The Gold Advisor](#)

BRIEN LUNDIN
[The Gold Newsletter](#)

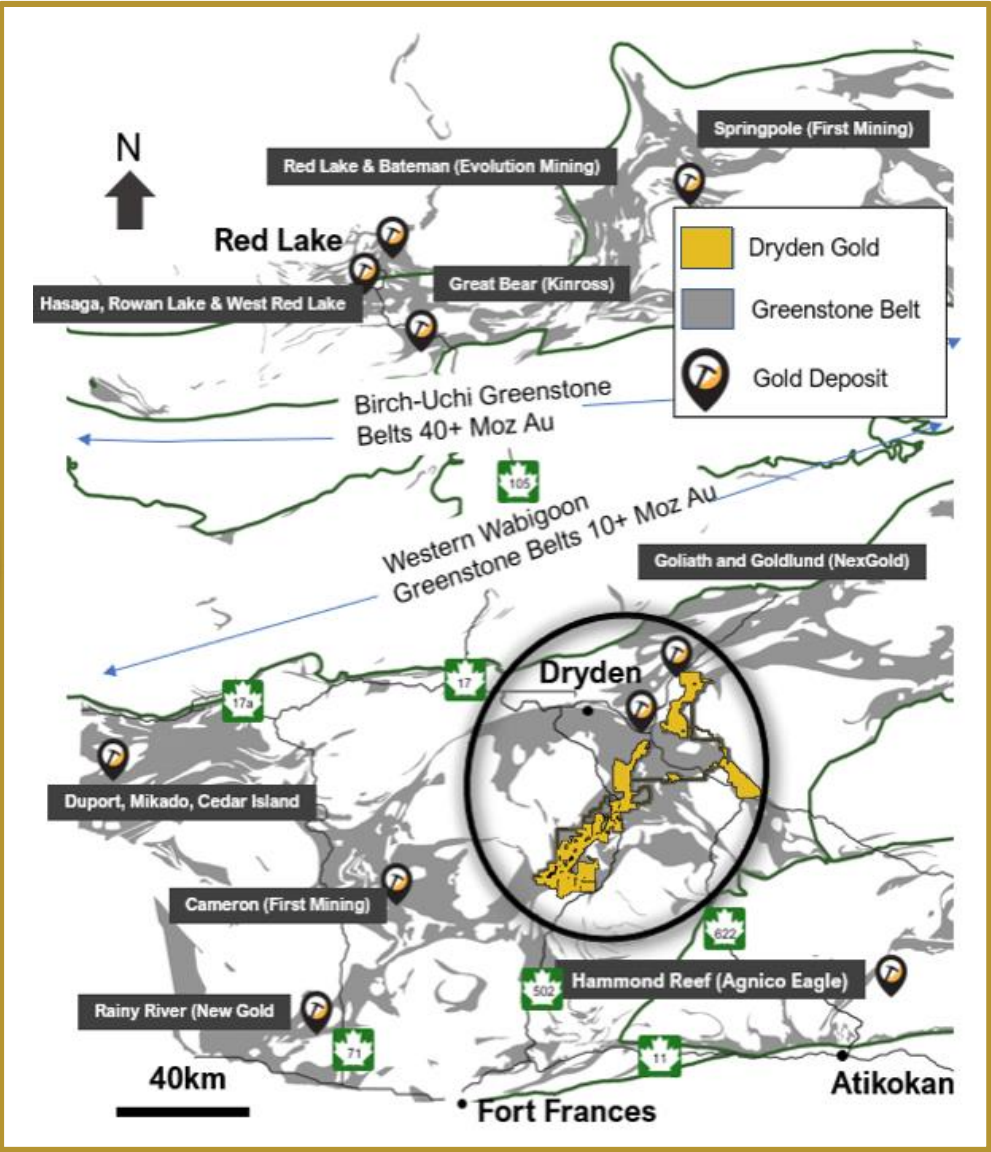
CHEN LIN
[Chen's Stock Picks](#)

Prolific Gold Region | An Under Explored District

Archean Lode Gold Mines Camps Central Canada



Limited exploration & historic mining district-wide at only shallow depths

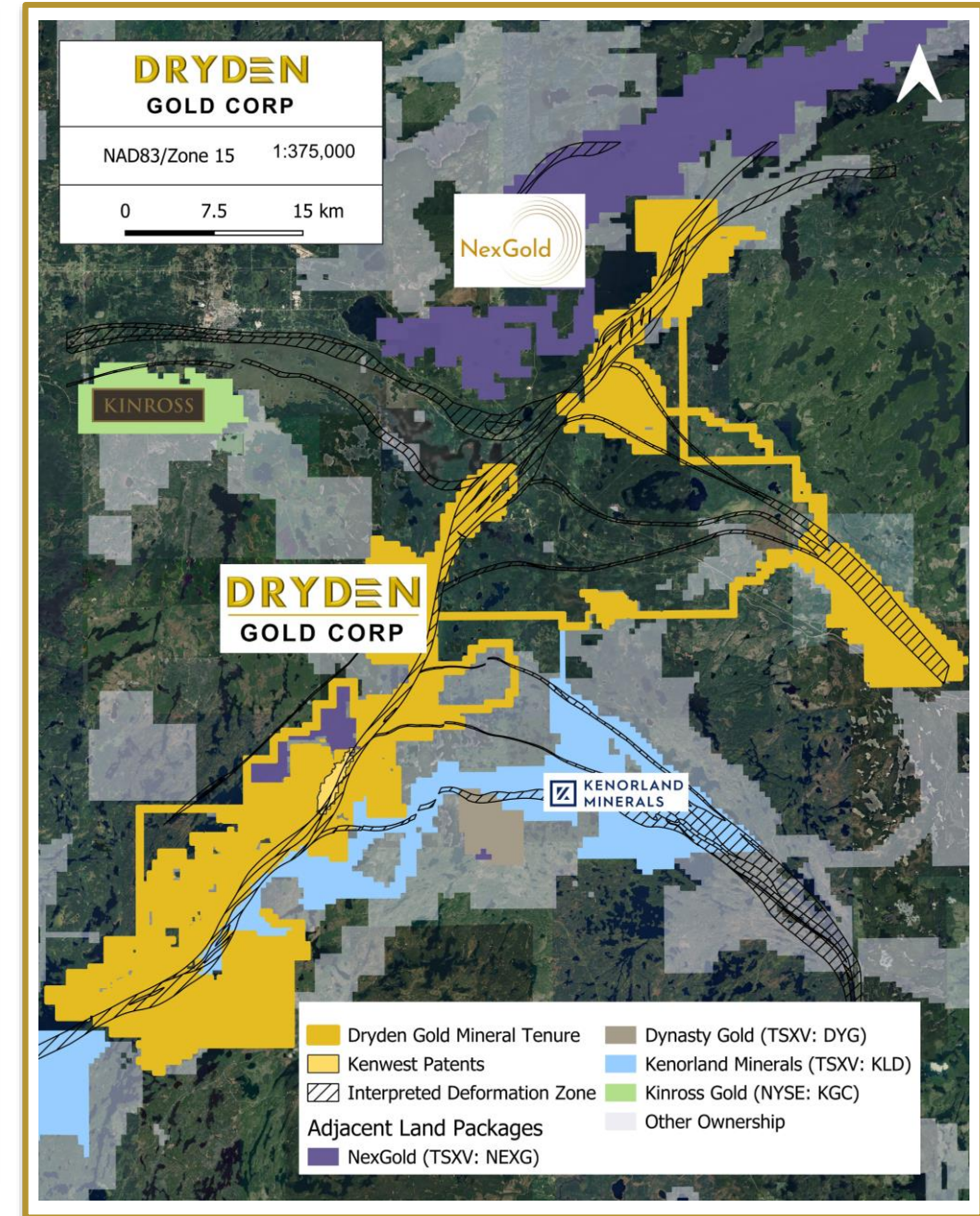


Strategic Land Package

- ▲ Over 702 km² (70,250 hectares) consolidated & 100% owned by Dryden Gold Corp.
- ▲ Excellent infrastructure – Roads, power & labour
- ▲ 50 km covering regional gold bearing MDdz structure (Manitou-Dinorwic deformation zone)
- ▲ Two additional cross-cutting regional gold-bearing fault structures

Strategic Exploration Method

- ▲ All oriented drill core to enhance structural interpretation
- ▲ Fully assayed drill core to define stacked structures in different host rocks
- ▲ Smaller drill passes, integrating new data for each phase insuring geological & structural controls go into targeting
- ▲ Year-round drilling at industry low cost of \$250/m (all in)



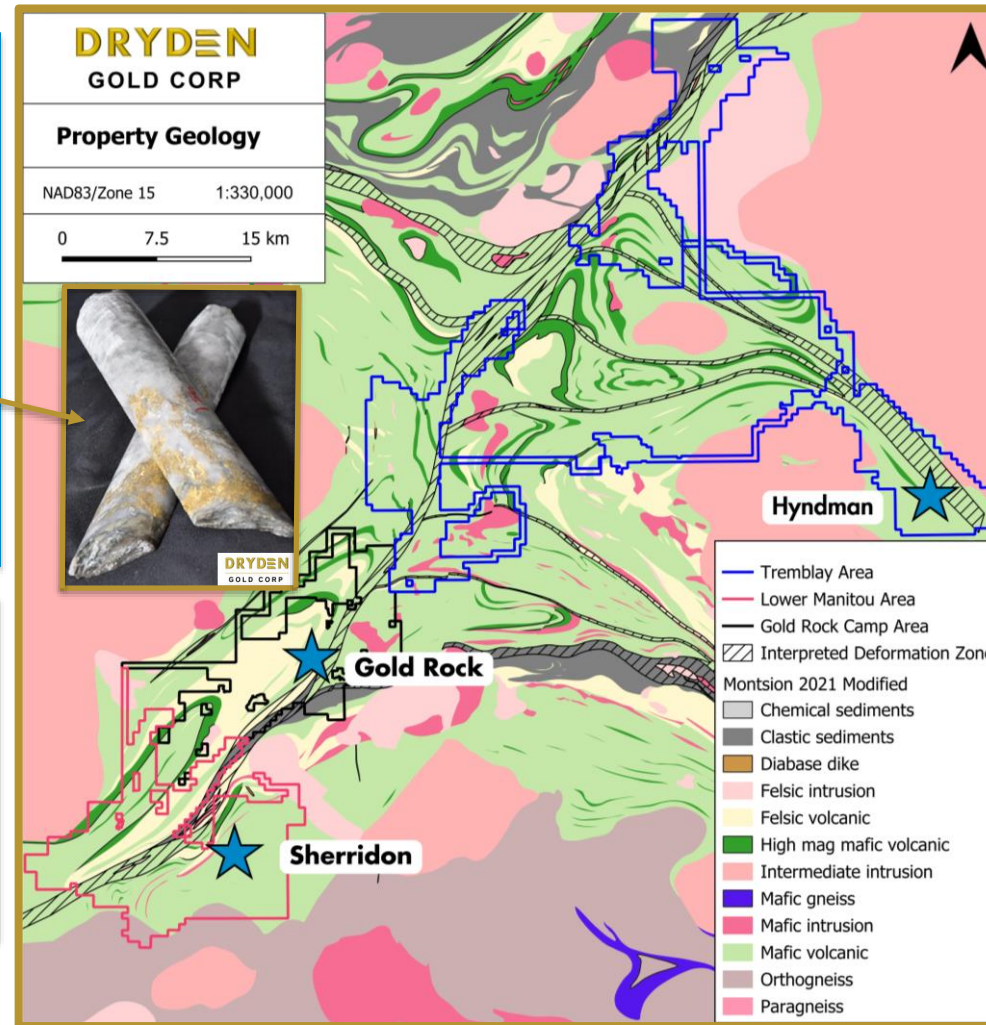
District Scale | Near Surface High-Grade Gold Across Property

Gold Rock Camp Drill Highlights

- ▲ 301.67 g/t over 3.90 meters
including 1,930.00 g/t over 0.60 meters
- ▲ 30.72 g/t gold over 5.70 meters
- ▲ 15.17 g/t gold over 6.95 meters
- ▲ 15.40 g/t gold over 6.10 meters
- ▲ 26.11 g/t gold over 3.16 meters,
including 79.80 g/t gold over 0.33 meters
- ▲ 3,497.0 g/t gold over 8.50 meters *historic drill hole*
including 53,700 g/t gold over 0.55 meters

Sherridon Drill Highlights

- ▲ 7.70 g/t gold over 3.00 meters *historic drill hole*
including 46.00 g/t gold over 0.50 meters
- ▲ 15.40 g/t gold over 5.50 meters *historic drill hole*
including 83.10 g/t gold over 1.00 meters



Hyndman Field Samples

- ▲ 34.80 g/t gold grab sample 2024
- ▲ 13.00 g/t gold grab sample 2023
- ▲ 12.30 g/t gold grab sample 2023
- ▲ 10.90 g/t gold grab sample 2023
- ▲ 6.41 g/t gold grab sample 2024

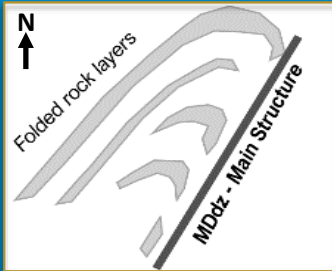
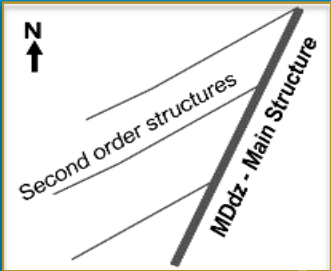
Sherridon Field Samples

- ▲ 617.00 g/t gold grab sample (historic)
- ▲ 184.50 g/t gold grab sample (historic)
- ▲ 123.00 g/t gold grab sample (historic)
- ▲ 122.50 g/t gold grab sample (historic)

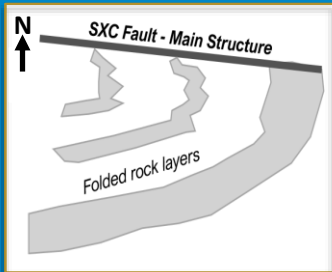
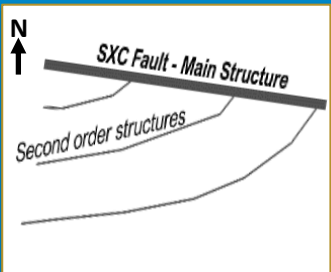
Gold Rock Camp

Similar Geological Setting to Red Lake

Dryden Gold Corp. Gold Rock Area Geology



Red Lake Mine Geology



Similar geological setting, rock types with regional folding and structural geometry

Favourable geological gold traps for high-grade gold

Various styles of gold mineralization

Quartz veins w/ free gold, shears hosting gold, disseminated sulphides

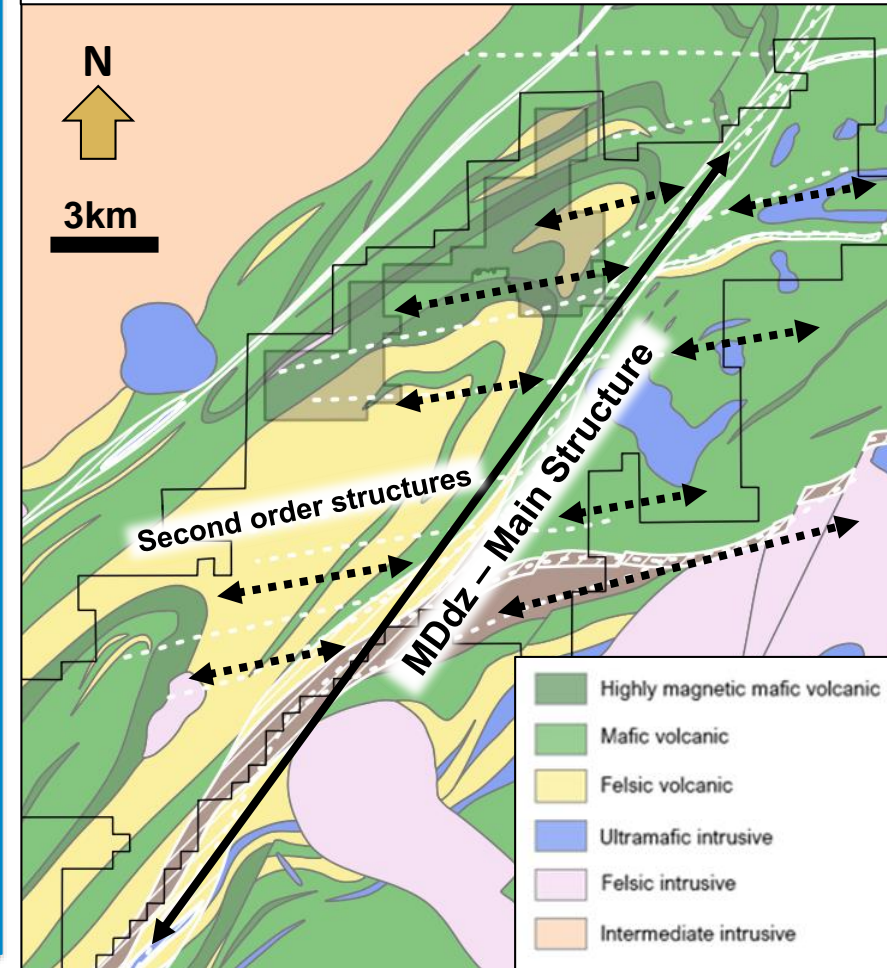
Very similar footprint at Red Lake and Gold Rock Camp

Stacked zones of mineralization in different structural planes at Red Lake & Gold Rock

Periodicity to these mineralized areas

Red Lake discovered through mineralization outcropping on surface like Gold Rock Camp

Gold Rock Camp Geology



Gold Rock Camp | Exploration Objectives

2024 Program



1 EXPANDED MINERALIZED **FOOTPRINT** OF GOLD SYSTEM



2 CONFIRMED ORIENTATION, STRUCTURAL CONTROLS AND **EXPANDED KNOWN** HIGH-GRADE STRUCTURES



3 DISCOVERED **THREE NEW HIGH-GRADE** STRUCTURES MINERALIZED FOOTPRINT OF GOLD SYSTEM



4 OUTLINED **NEW HIGH-GRADE TARGETS** ACROSS THE PROPERTY AS PART OF THE **DISTRICT SCALE POTENTIAL**

2025 Program



1 GROW **THE ELORA GOLD SYSTEM** ON STRIKE TESTING NEW STRUCTURAL INTERSECTIONS



2 EXPAND **HIGH-GRADE MINERALIZATION** DOWN PLUNGE AT **THE JUBILEE ZONE** GOLD ROCK



3 TEST **NEW TARGETS** ALONG STRIKE GOLD ROCK



4 INVESTIGATED HIGHLY PROSPECTIVE **REGIONAL TARGETS**

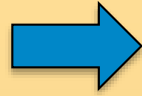


DRYDEN
GOLD CORP

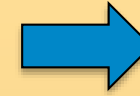


Gold Rock | Targeting High-Grade Structures

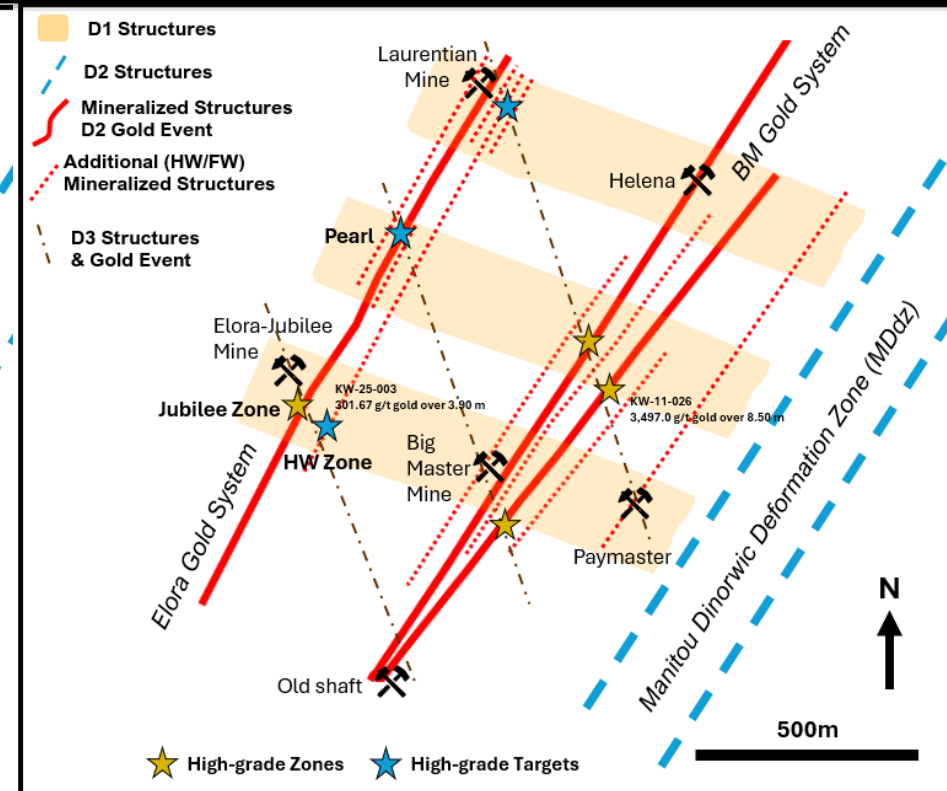
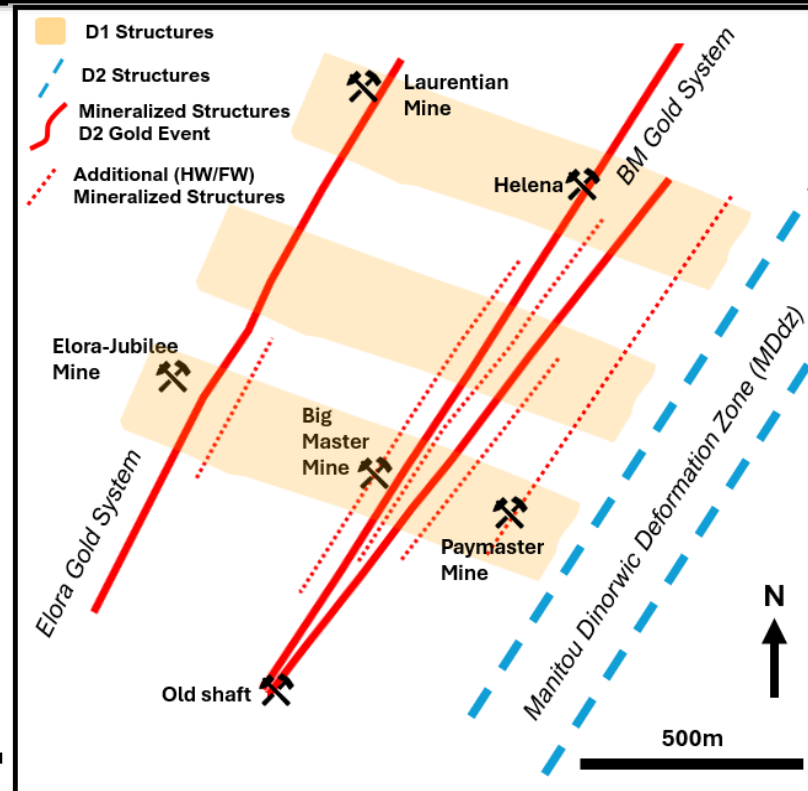
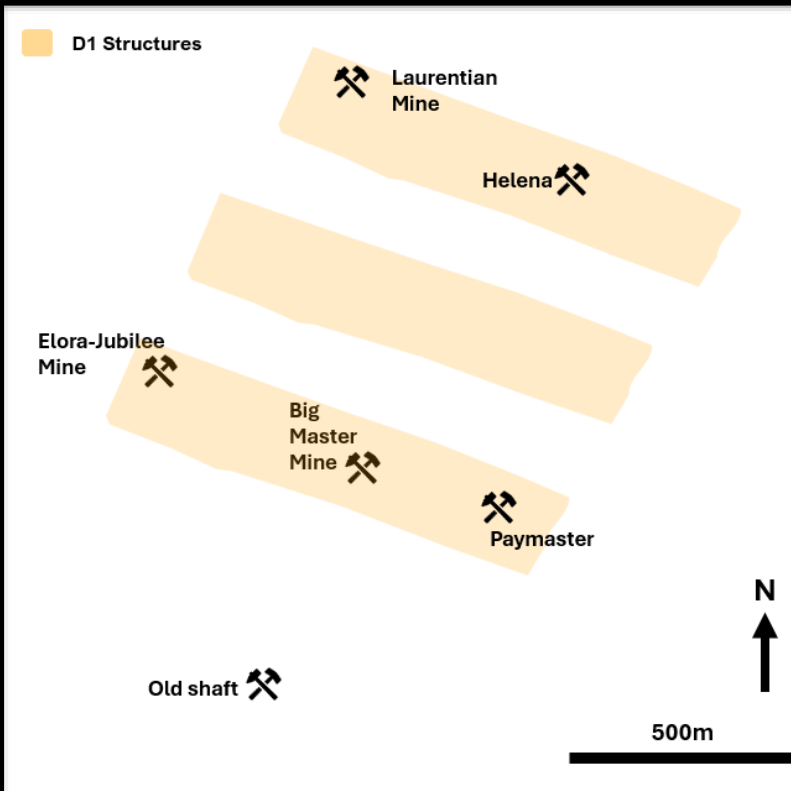
First Deformation Event



Second Deformation
& Gold Mineralization Event



Third Deformation
& Gold Mineralization Event



Note - figures simplified cartoon maps of the interpreted deformation and mineralization history

Elora Gold System | Multiple Stacked Mineralized Structures

Hypotheses -

Multiple Stacked Gold Mineralization along
Northeast trending

shear zones and **veins structures**

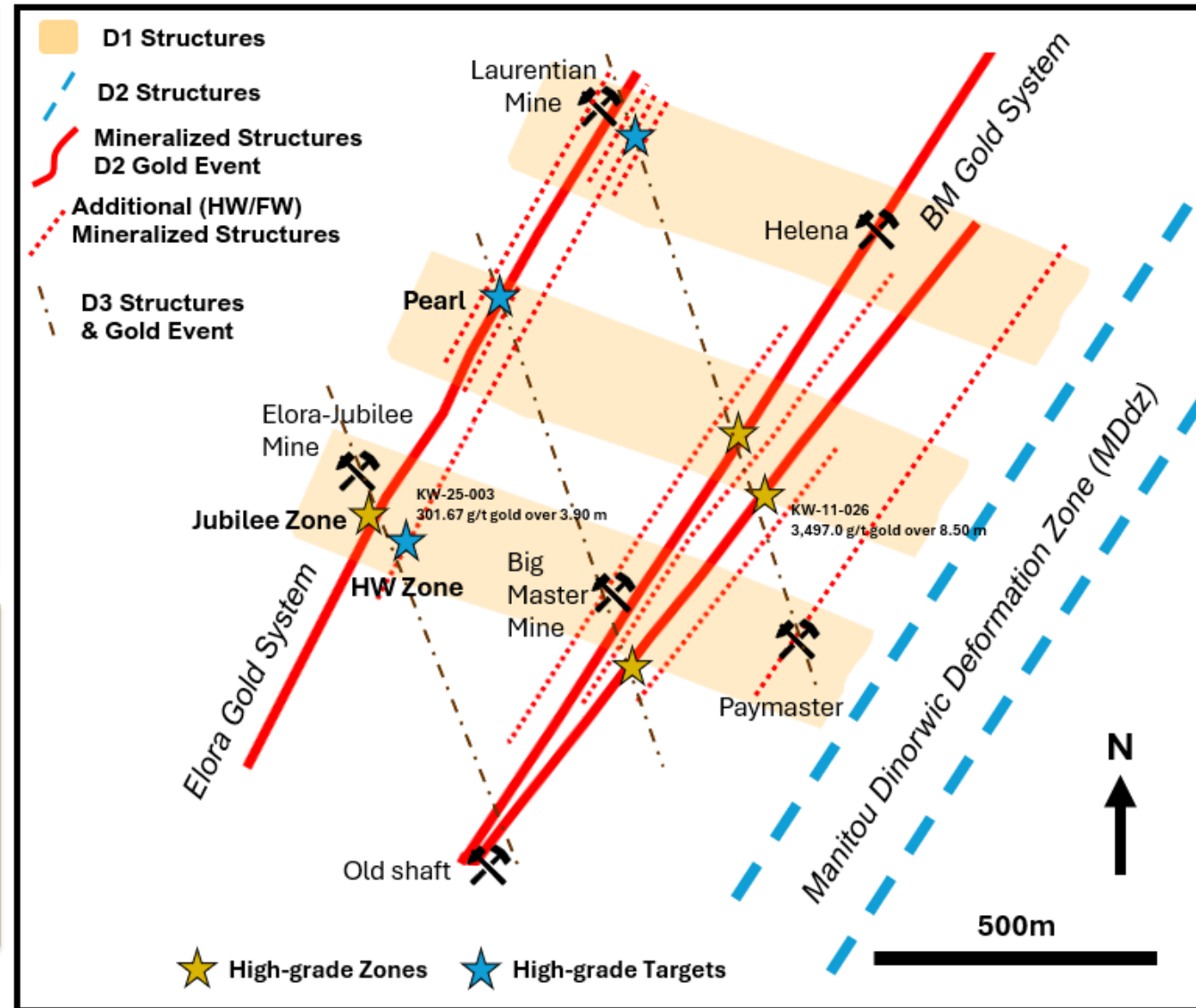
Elora Gold & Big Master Gold Systems

Gold becomes **enriched** further during later
deformation event (D3) with more gold
mineralization along the **North-south structures** and
high-grade localizing at these intersections.

*Elora Gold System hosted
high-grade.*

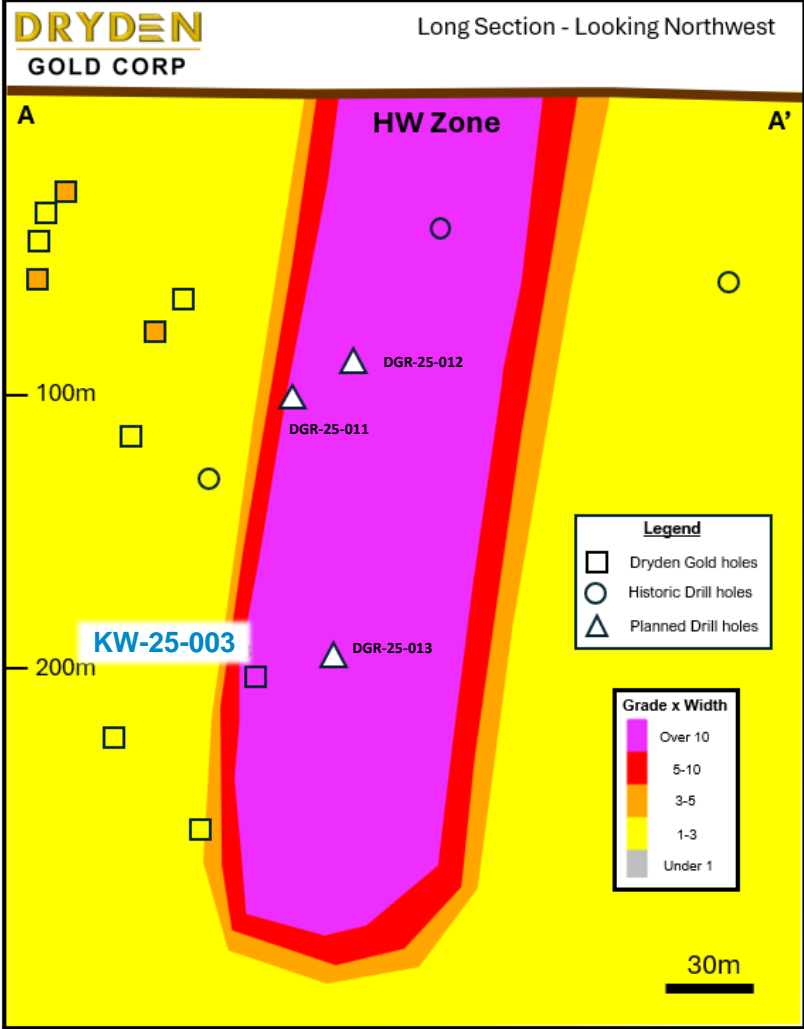
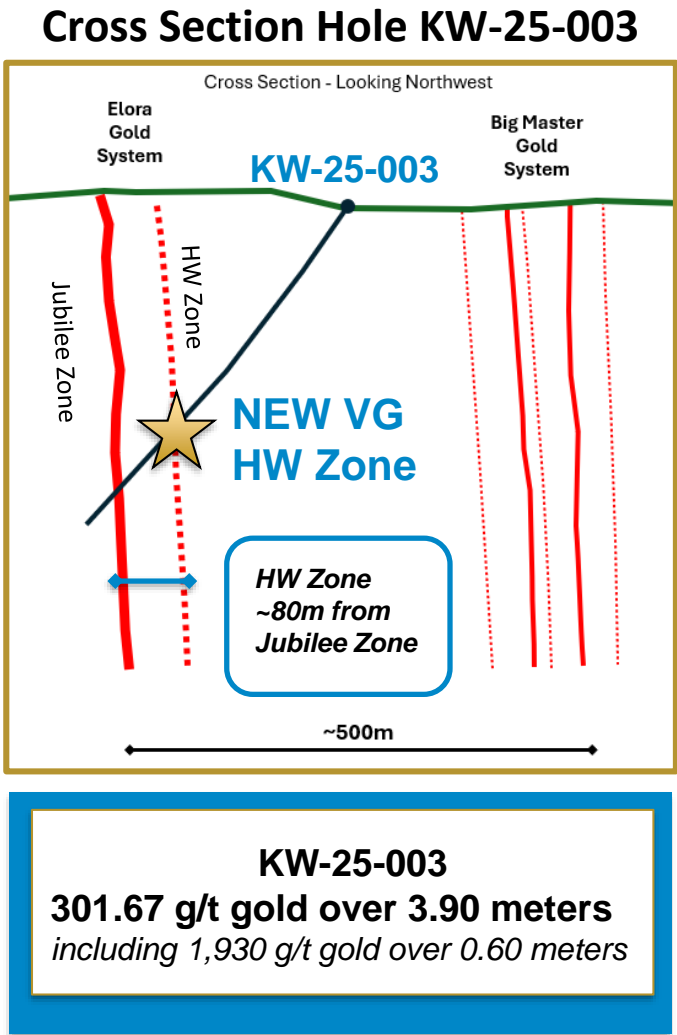
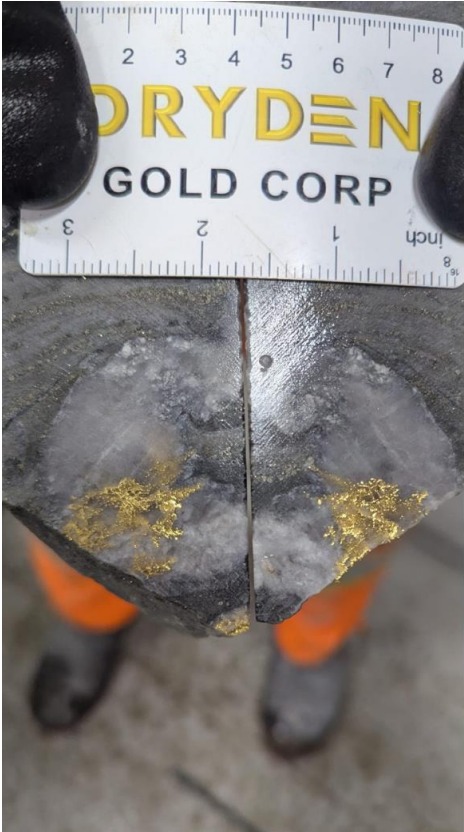
*Laurentian Gold Mine
with average grade of
14 g/t gold and mined to
only **140 meters**.*

Laurentian Gold Mine



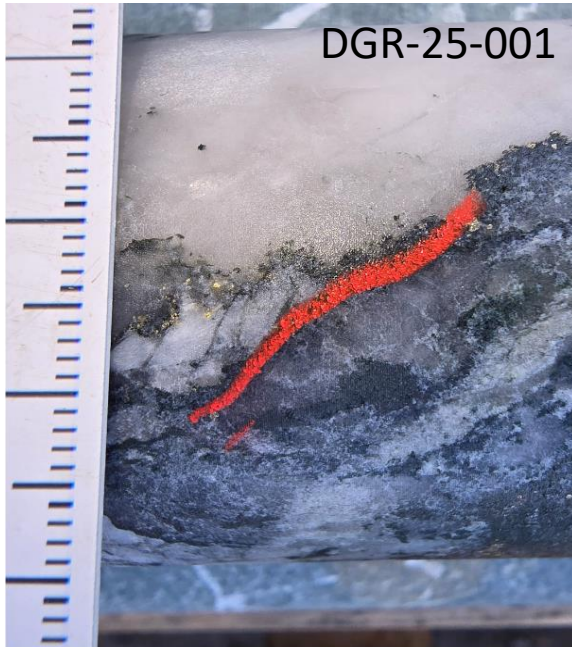
Elora Gold System | NEW HW Mineralized Structure

NEW Stacked Gold-Bearing Structures



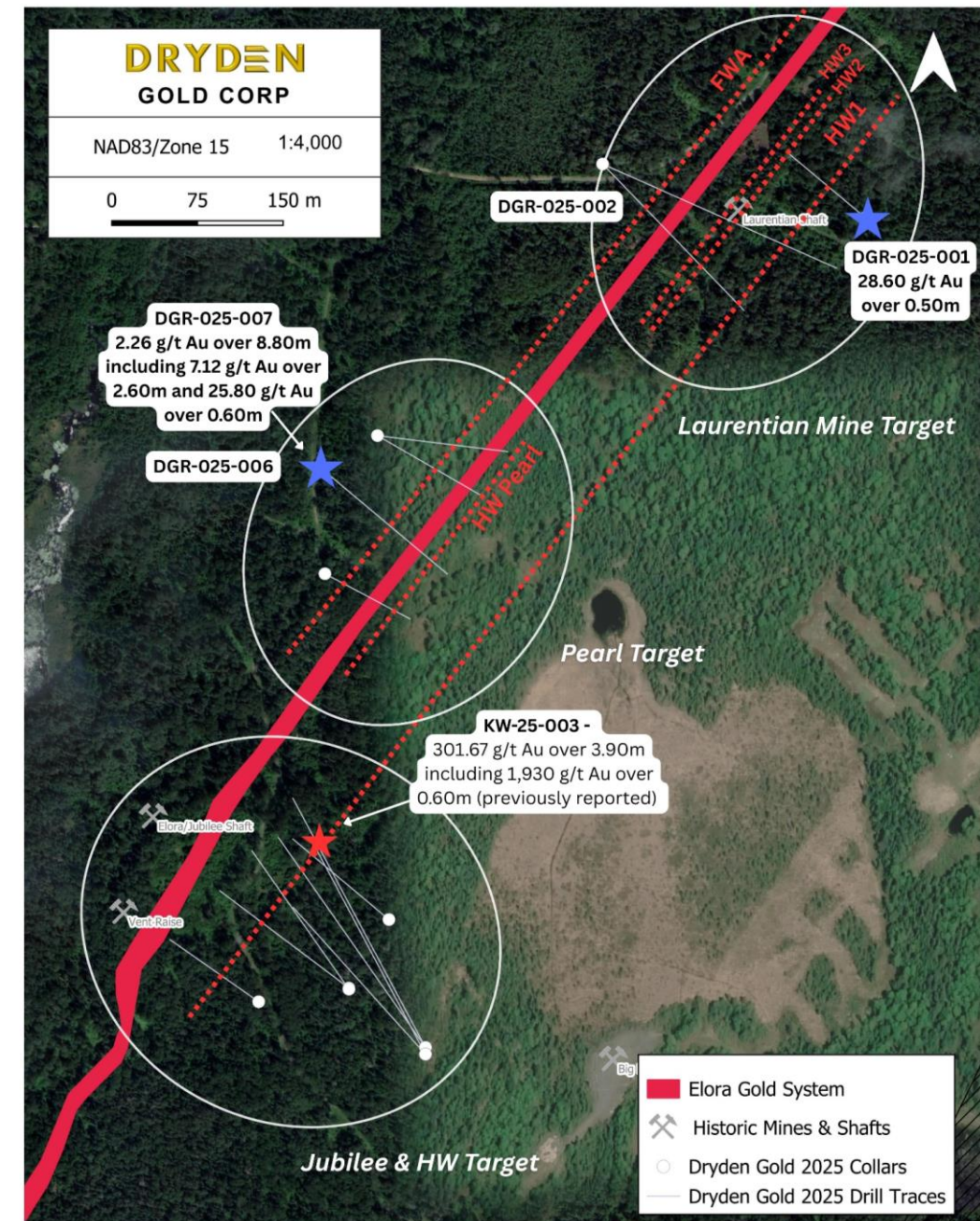
Elora Gold System

NEW Stacked Gold-Bearing Structures



“The recognition of multiple, sub-parallel gold-bearing structures, each capable of hosting high-grade gold mineralization adds numerous priority exploration targets by interpreting the intersections of the recognized D1, D3, or fold-related elements which provides opportunities for dilation within the system and now identifies a key control of high-grade gold mineralization,” stated Maura Kolb, President of Dryden Gold.

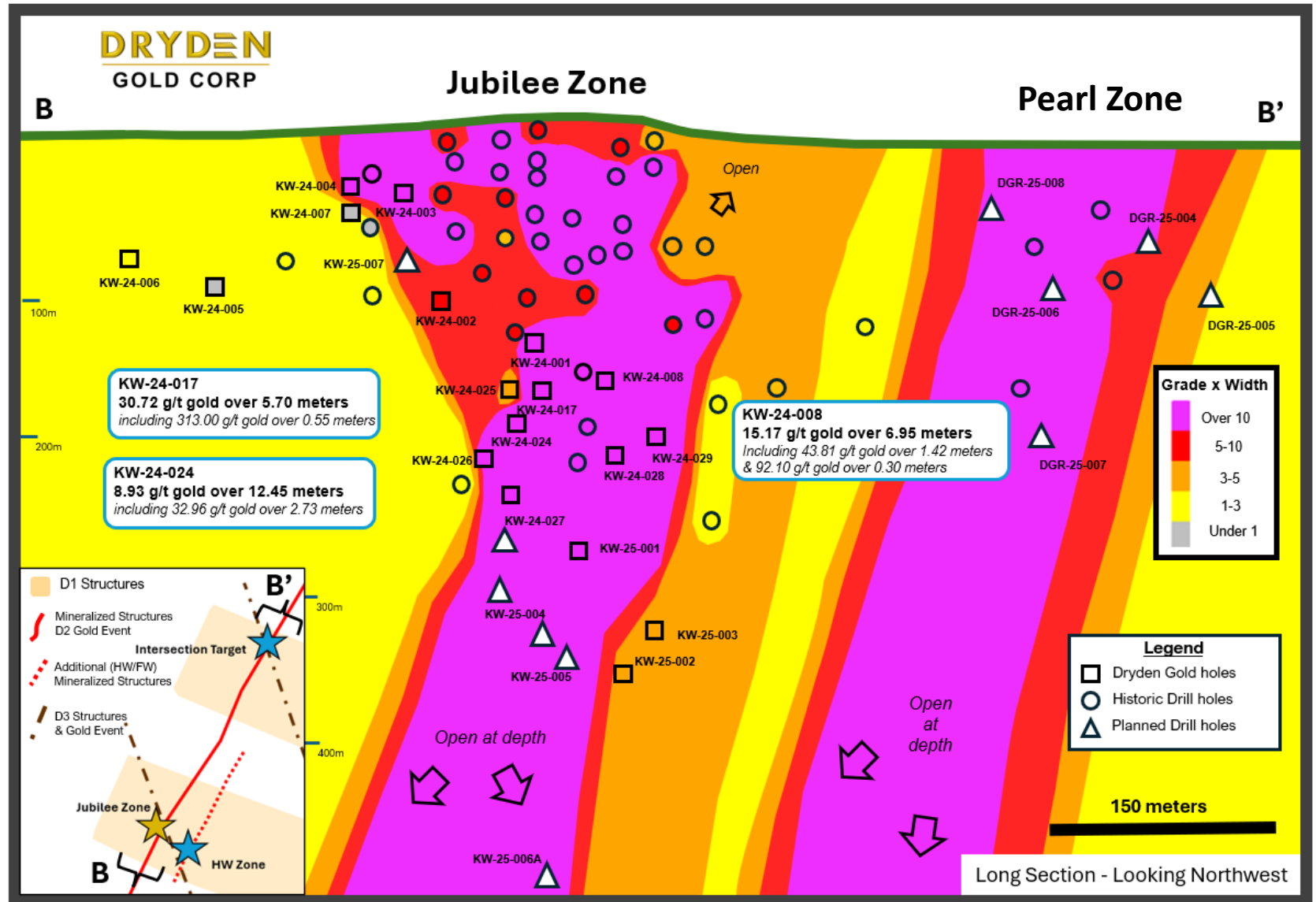
DRYDEN
GOLD CORP



Elora Gold System | Jubilee Zone Expanding Strike & Depth

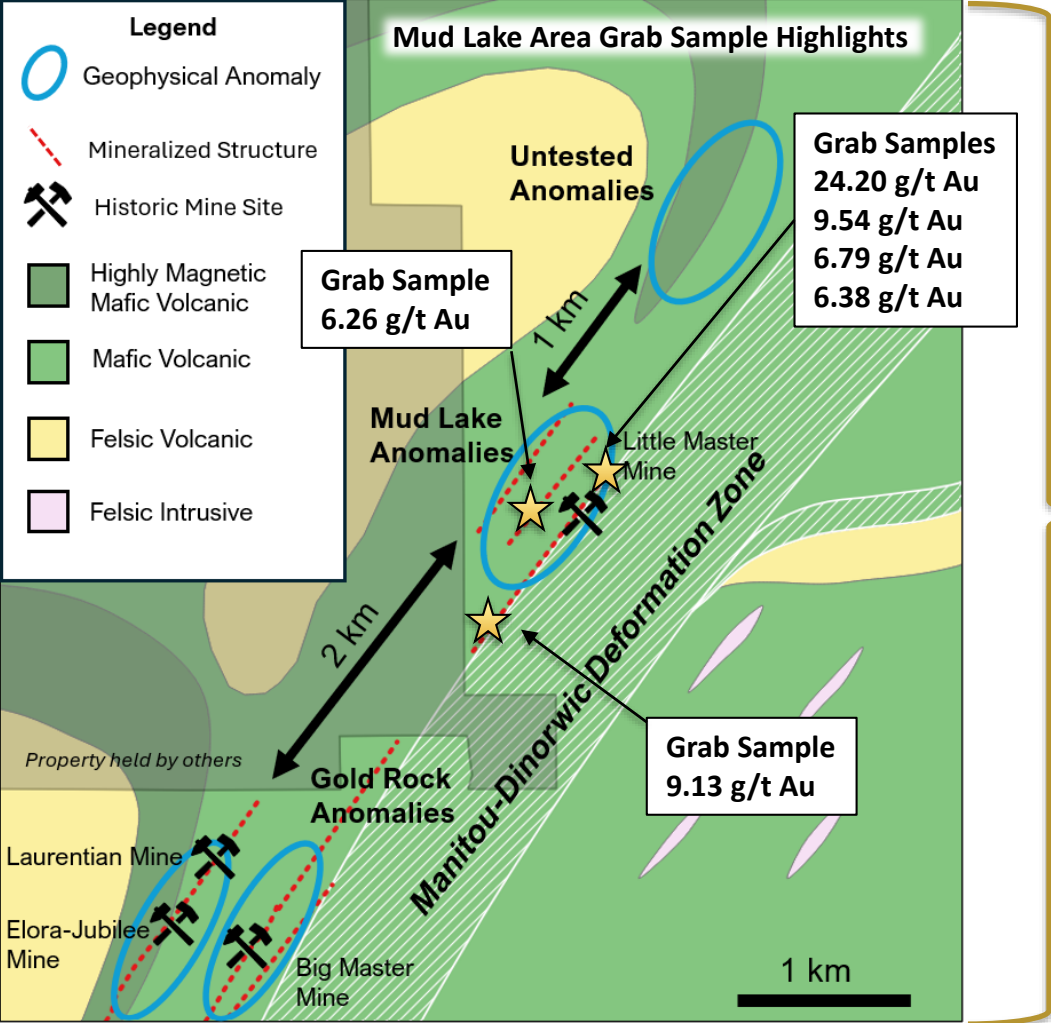


- Targeting shear basalt with sulphide mineralization & quartz stringer veins
- Testing gold mineralization continuity down plunge and on strike

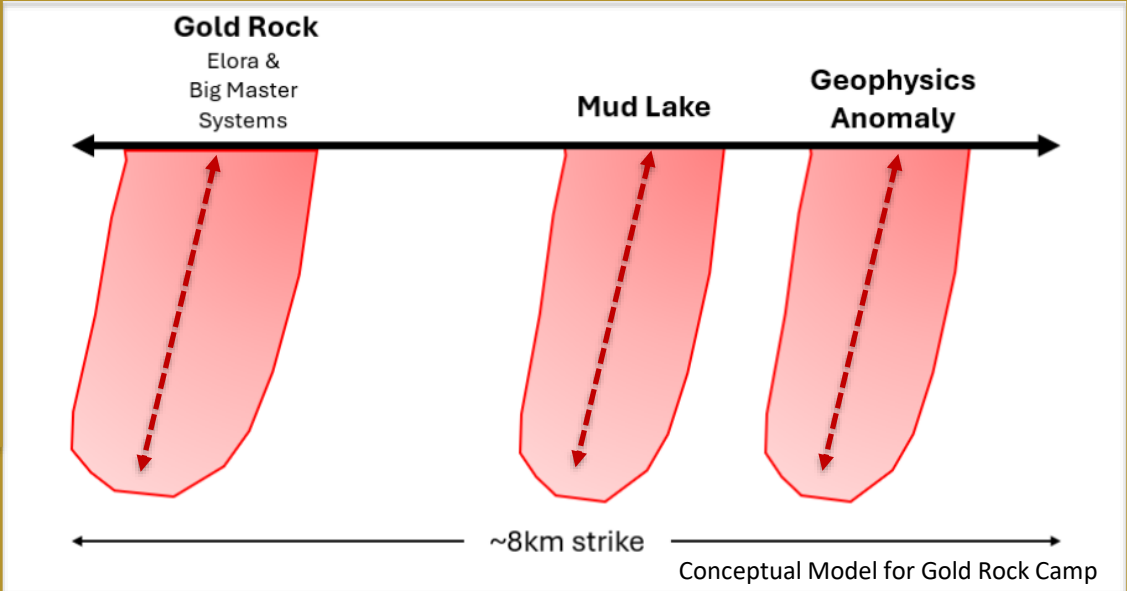


Gold Rock | Periodicity | Another Comparison to Red Lake

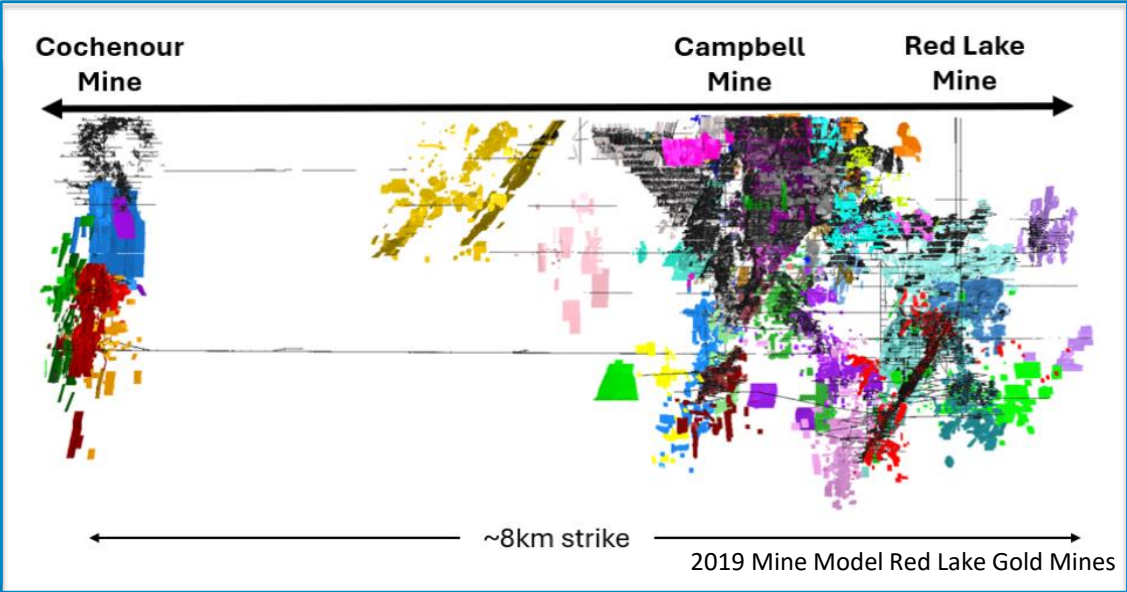
Gold Rock Trend Map - Gold Rock, Mud Lake Area and Untested



Long Section
from
Gold Rock
to
Mud Lake
to
Untested
Geophysics
Anomalies



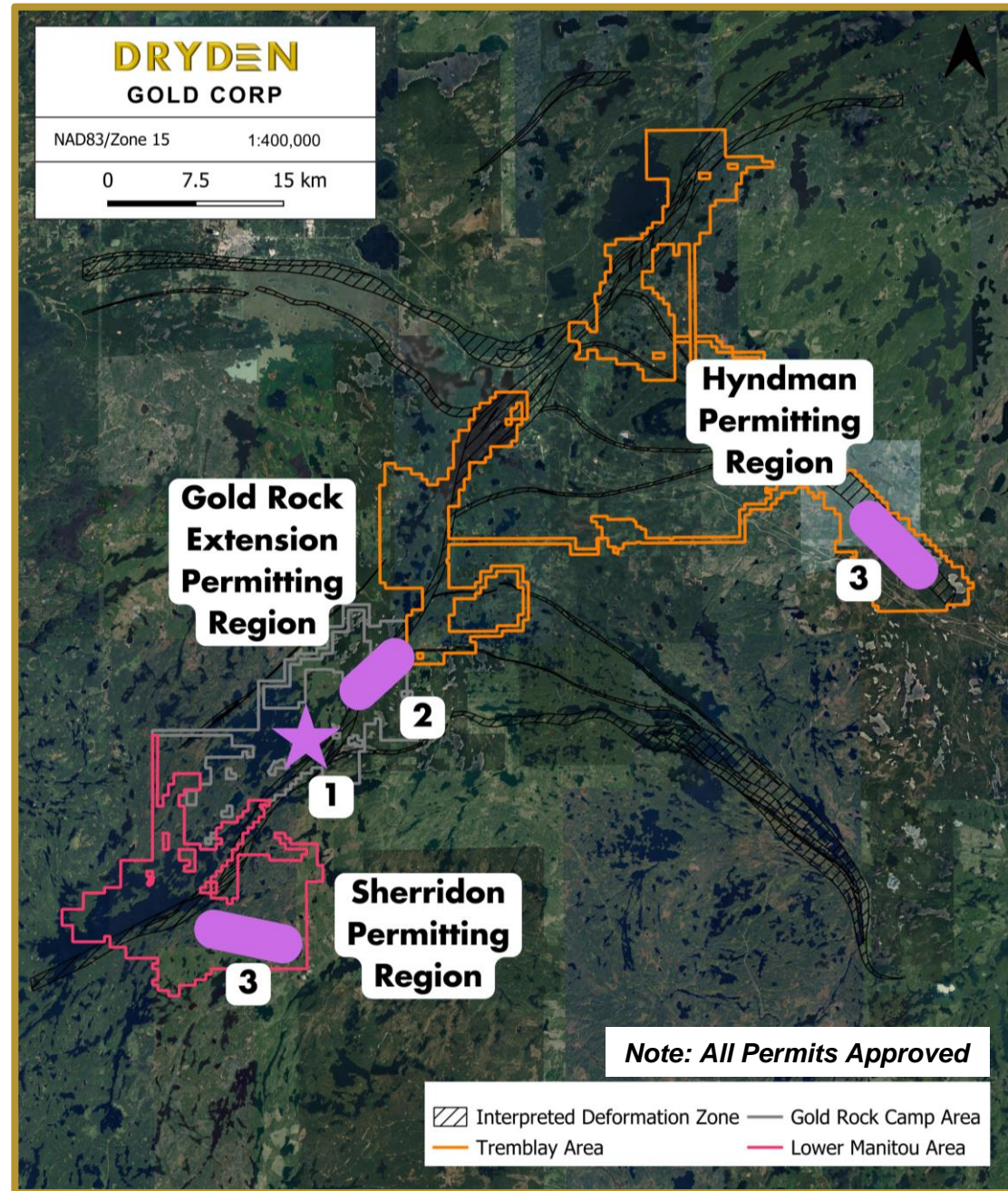
Long Section
from
Red Lake
Mine
to
Campbell
Mine
To
Cochenour
Mine



2025 Regional Exploration

Regional Exploration New Discovery

- ▲ Highly **prospective** land package
- ▲ **Numerous** Regional targets
- ▲ Structural Synthesis – Tectonic Evolution
- ▲ **District Scale** Potential
- ▲ Multiple Deposit Models
 - ▲ Ultramafic Host (Sherridon)
 - ▲ Granodiorite Host (Hyndman)



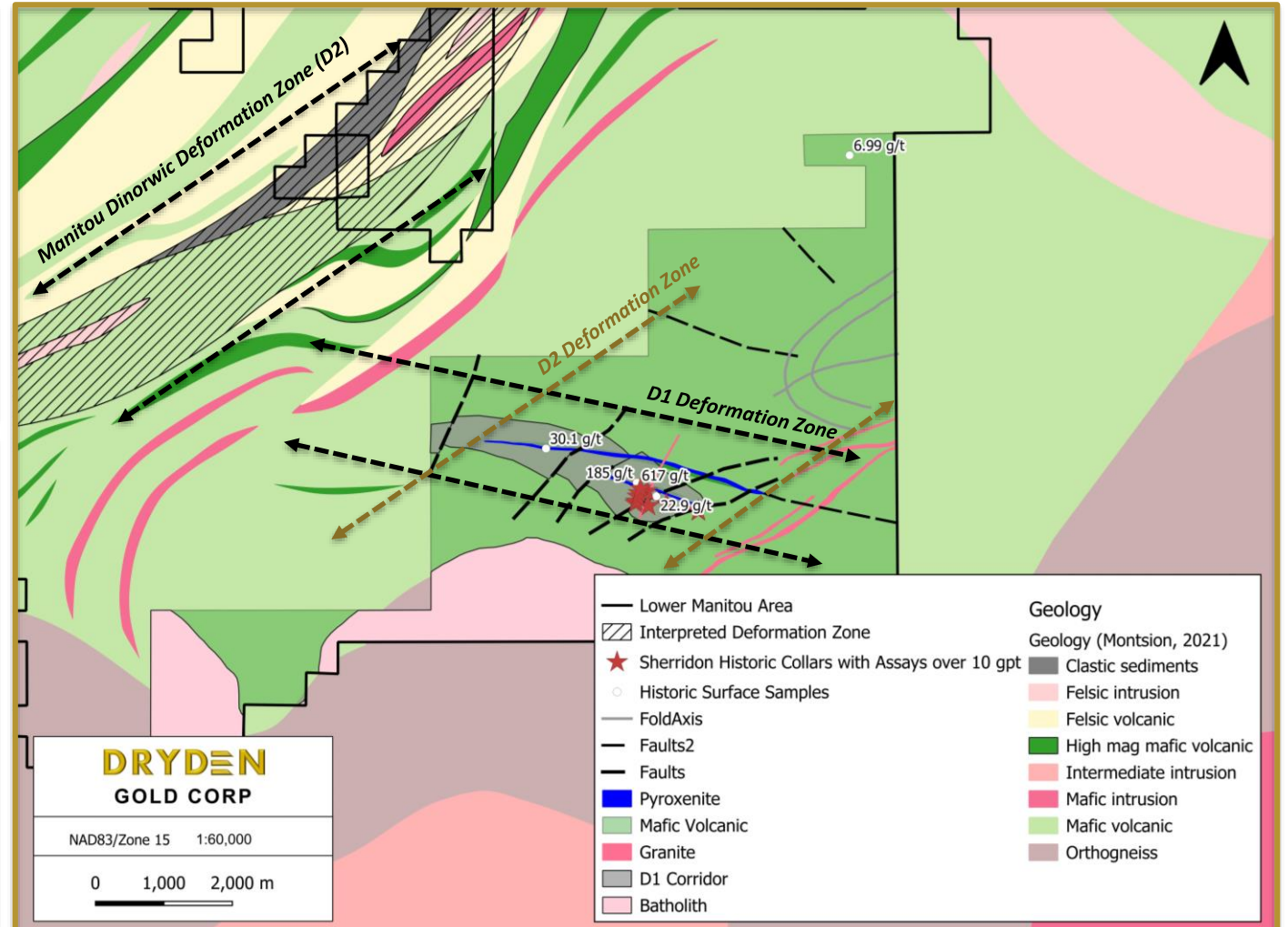
Sherridon | Regional Exploration

Assay Highlights:

- ▲ **617.00 g/t gold** surface sample
- ▲ Several surface samples over **100.00 g/t gold**
- ▲ Hole SH-12-25 **15.40 g/t gold** over 5.50 m including 83.70 g/t gold over 1.00 m

- ▲ It is hosted in mafic volcanic along a D1 (east-west) deformation zone within a region that hosts D2 oriented faulting and D1 oriented pyroxenite dykes
- ▲ The pyroxenite dykes appear closely associated with mineralization and are likely infilling the same fluid pathways that introduced the gold.

DRYDEN
GOLD CORP



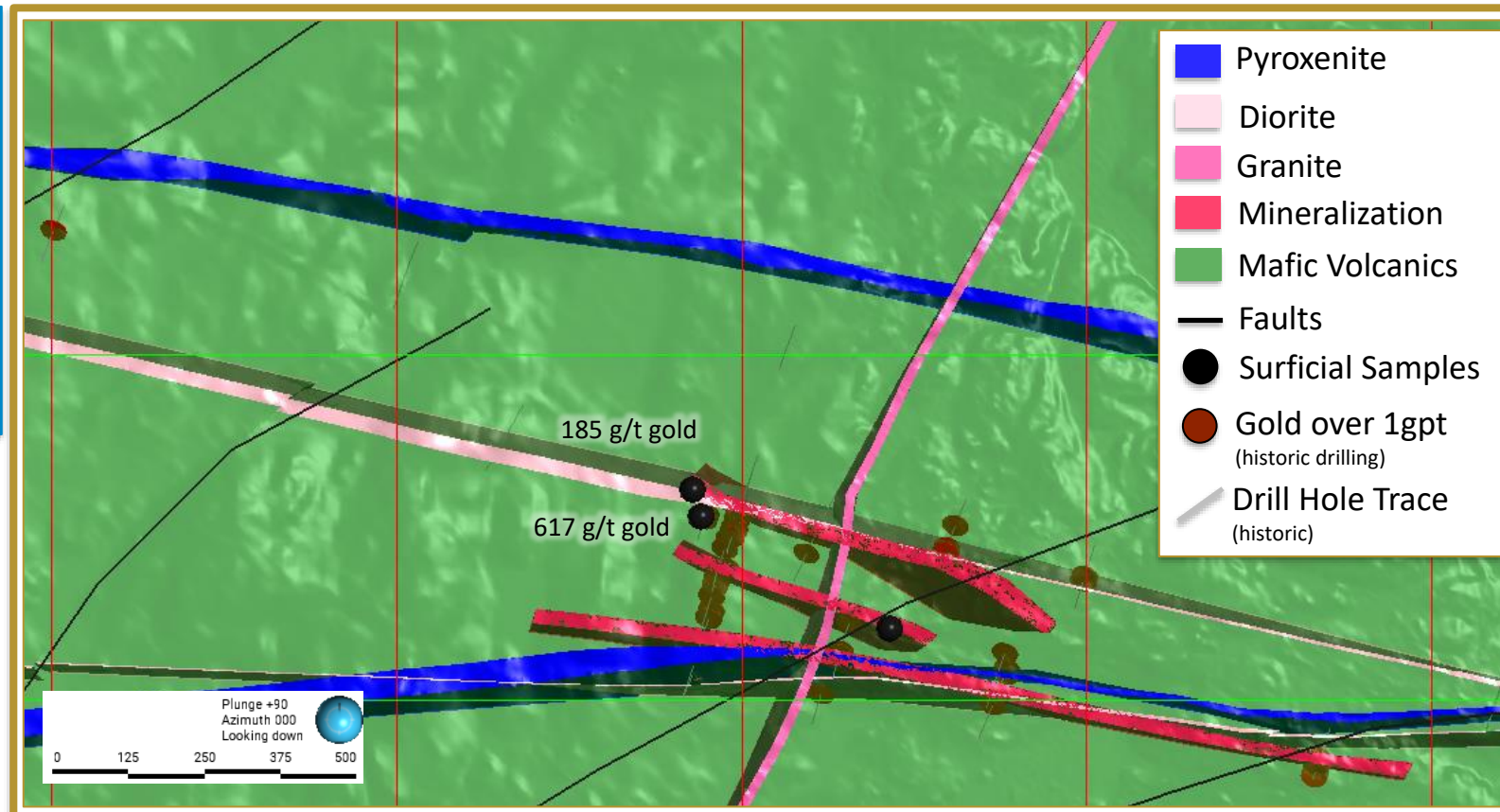
Mapping & geological modeling completed in 2024
Initial drill program is scheduled for June 2025.

Sherridon | Regional Exploration

▲ Highlights:

- ▲ **617.00 g/t gold** surface sample
- ▲ Several surface samples over **100.00 g/t gold**
- ▲ **15.40 g/t gold** over 5.50 meters including **83.70 g/t gold** over 1.00 meters in drill hole SH-12-25

- ▲ Mineralization concentrated at intersections between D1 (E-W), D2 (NE/SW) and D3 (N-S) structures.
- ▲ Following the 2024 mapping and geological modeling program, a drill program is scheduled to start in summer 2025.



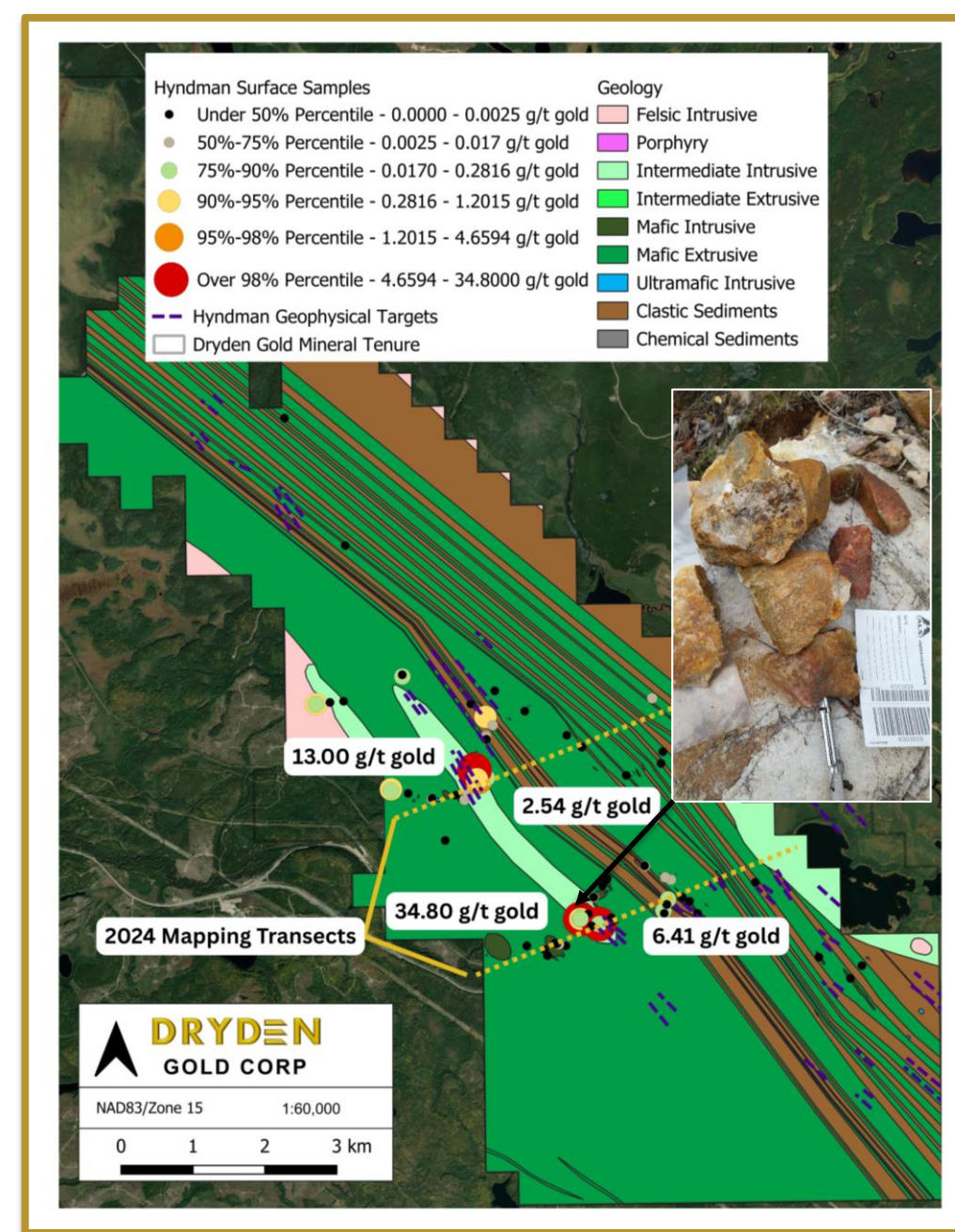
- ▲ Exploration drill permits have been approved for Sherridon with mobilization notice given to First Nations groups

Hyndman | Regional Exploration

- Field programs in 2024 & 2023 discovered new gold showings with 19 samples returning gold values higher than 1.00 g/t gold and 6 samples returning grades over 5 g/t gold.

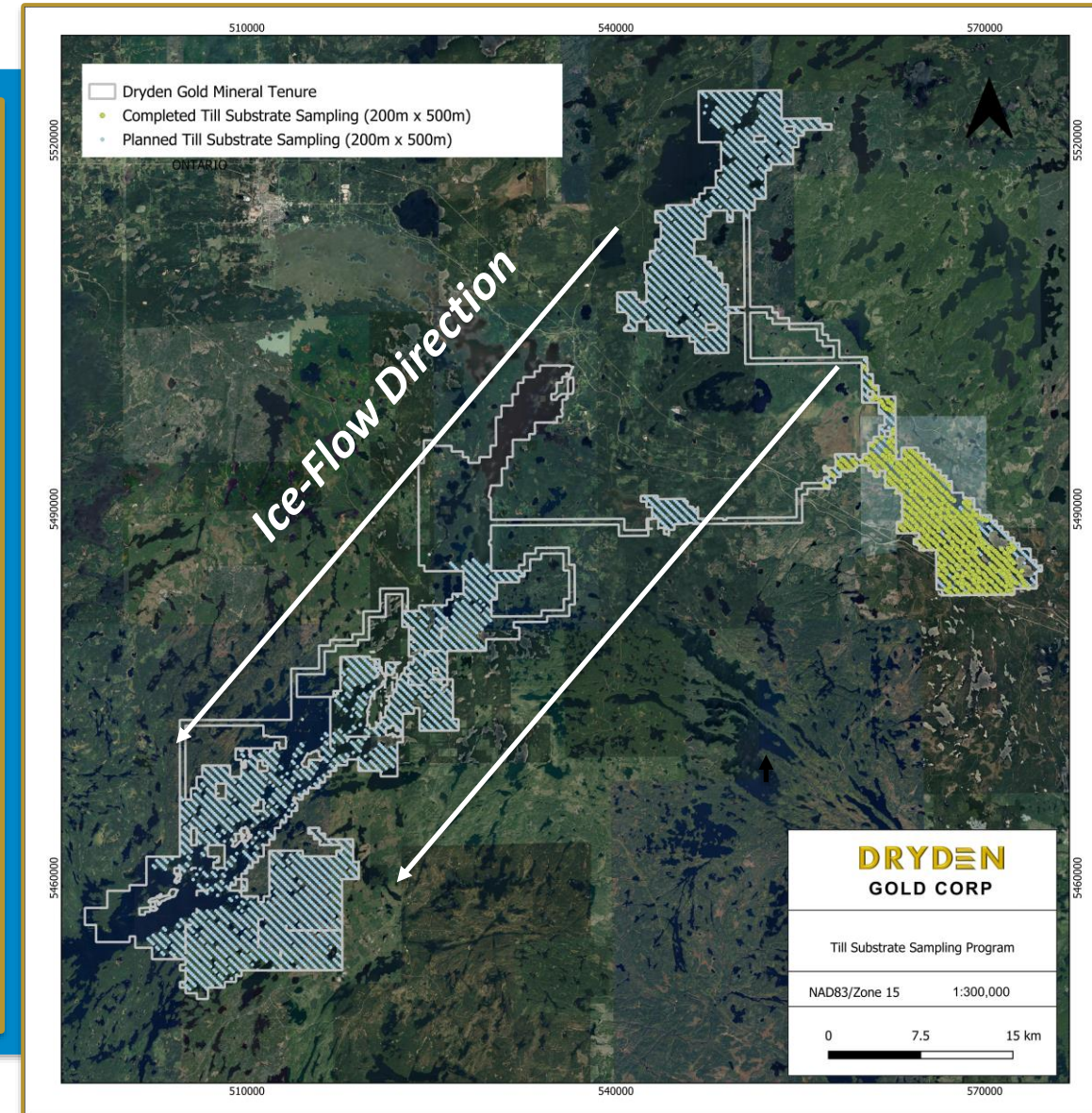
- Planned field program for 2025 includes
 - Further detailed mapping of Hyndman with transects based on geophysical targets to the northeast and southwest of the 2024 work area.
 - Channel sampling over the most prospective areas from the 2023, 2024 and 2025 work programs

- The objective for the Hyndman Project is to advance it to a drill-ready stage. Permits have been granted, with drilling targeted for Q4 2025.



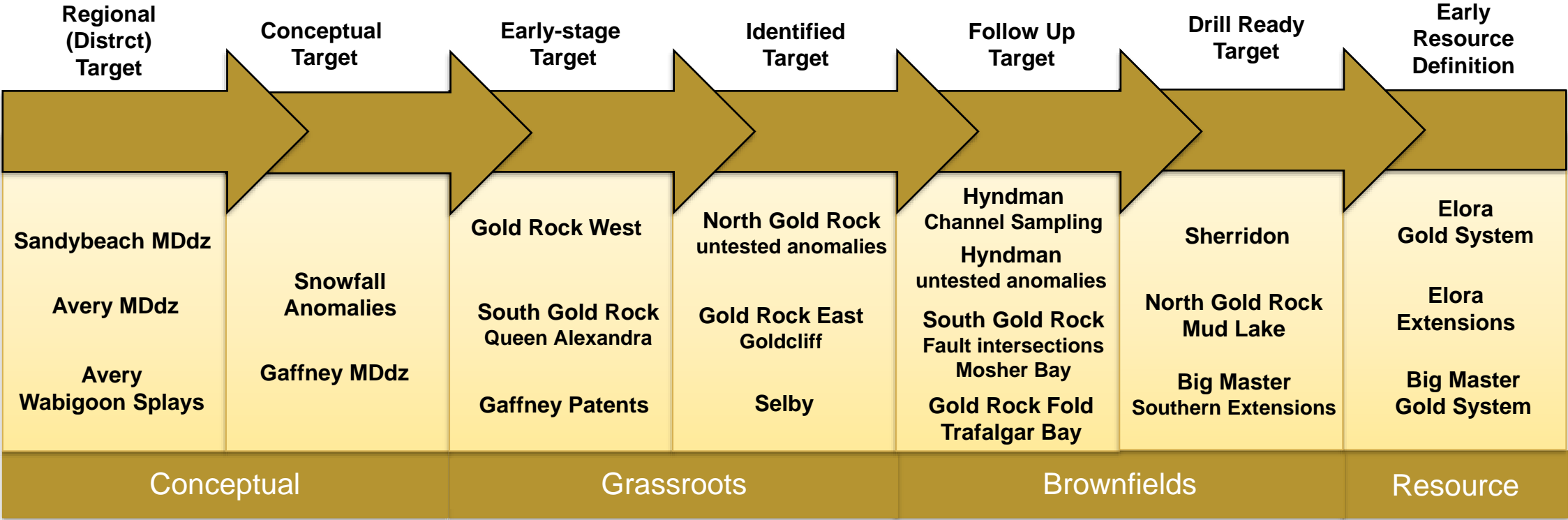
Regional Exploration | Till Substrate Sampling Program

- ▲ Dominant ice flow direction to the southwest with only one main flow noted in both academic papers and in field mapping
- ▲ Focused on sampling B-horizon or C-horizon developed on a till substrate
- ▲ Glaciofluvial samples being collected where needed but noted as these will have to be dealt with separately in interpretation.
- ▲ Planned 200m spaced samples along 500m spaced lines for a total of approximately 4,500 samples. LiDAR was used for helping place appropriate samples.
- ▲ Samples will be sieved to <63 micro fraction and a super-trace Au + multi-element package ([ALS - AuME-ST43](#)) to detect trace/pathfinder elements.
- ▲ The 2025 work plan is to complete this sample grid with a potential 2026 follow up program focusing on tighter grid spacing in areas of interest and/or heavy mineral concentrate samples (HMC).



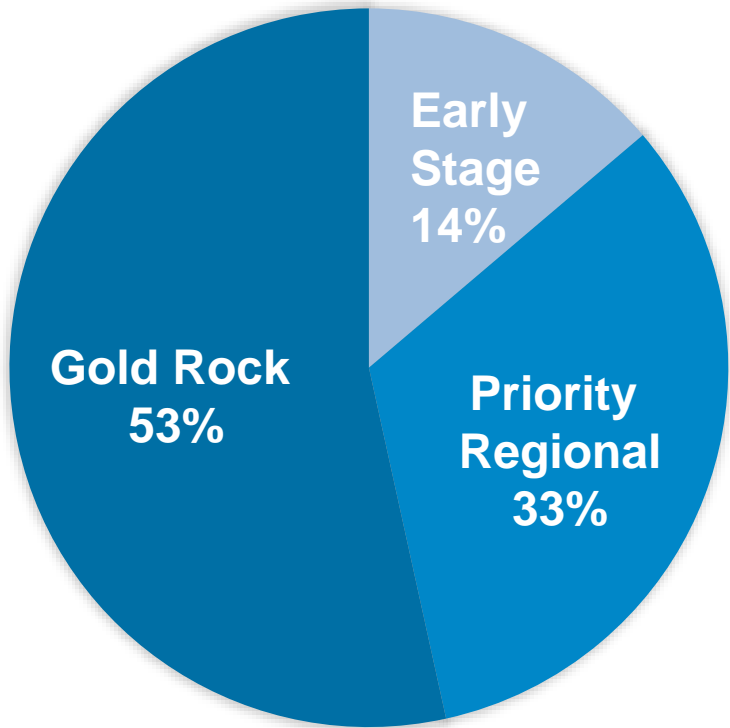
Dryden Gold's Resource Pipeline

- 2025 Exploration Emphasis on **Gold Rock Camp** Targets - **Drill Permitted** for Northern Extensions
- Sherridon & Hyndman**- Two Regional Target Areas Identified and **Now Permitted** for Further Field Work & Drilling During 2025 Campaign



Exploration Budget | Marketing

Item	Property	Cost (\$CAD)
LiDAR	All properties	\$100,000
Till/Soil Geochemical Survey	All properties	\$700,000
Geophysics 3D Inversion	Priority Regional Targets <i>Sherridon, Gold Rock expanded, other</i>	\$250,000
Mapping & Sampling	Priority Regional Targets <i>Gold Rock, Hyndman, Sherridon</i>	\$700,000
Channel Sampling	Priority Regional Targets <i>Gold Rock, Hyndman, Sherridon</i>	\$150,000
Drilling	Gold Rock	\$1,500,000
Drilling	Gold Rock Extension	\$1,600,000
Drilling	Priority Regional Targets <i>Gold Rock, Hyndman, Sherridon</i>	\$800,000



Total 2025 Funded Exploration Budget 5.8 M includes \$860K in Q4 2024



Why Dryden Gold?

- ▲ The Property
- ▲ The Team
- ▲ The High-Grade Gold
- ▲ The Geology
- ▲ The Jurisdiction
- ▲ The Infrastructure
- ▲ The Shareholders

The Next Red Lake?



A photograph of a forest floor covered in vibrant green moss, with several tall, thin evergreen trees standing in the background. The scene is lit with soft, natural light, creating a serene and natural atmosphere. The image is partially obscured by a diagonal white line that separates it from the company information on the right.

DRYDEN

GOLD CORP

TSXV: DRY | OTCQB: DRYGF
DRYDENGOLD.COM

Contact:

Trey Wasser CEO & Director
+1 (940) 368-8337
twasser@drydengold.com

Maura Kolb President & QP
+1 (807) 632-2368
mjkolb@drydengold.com



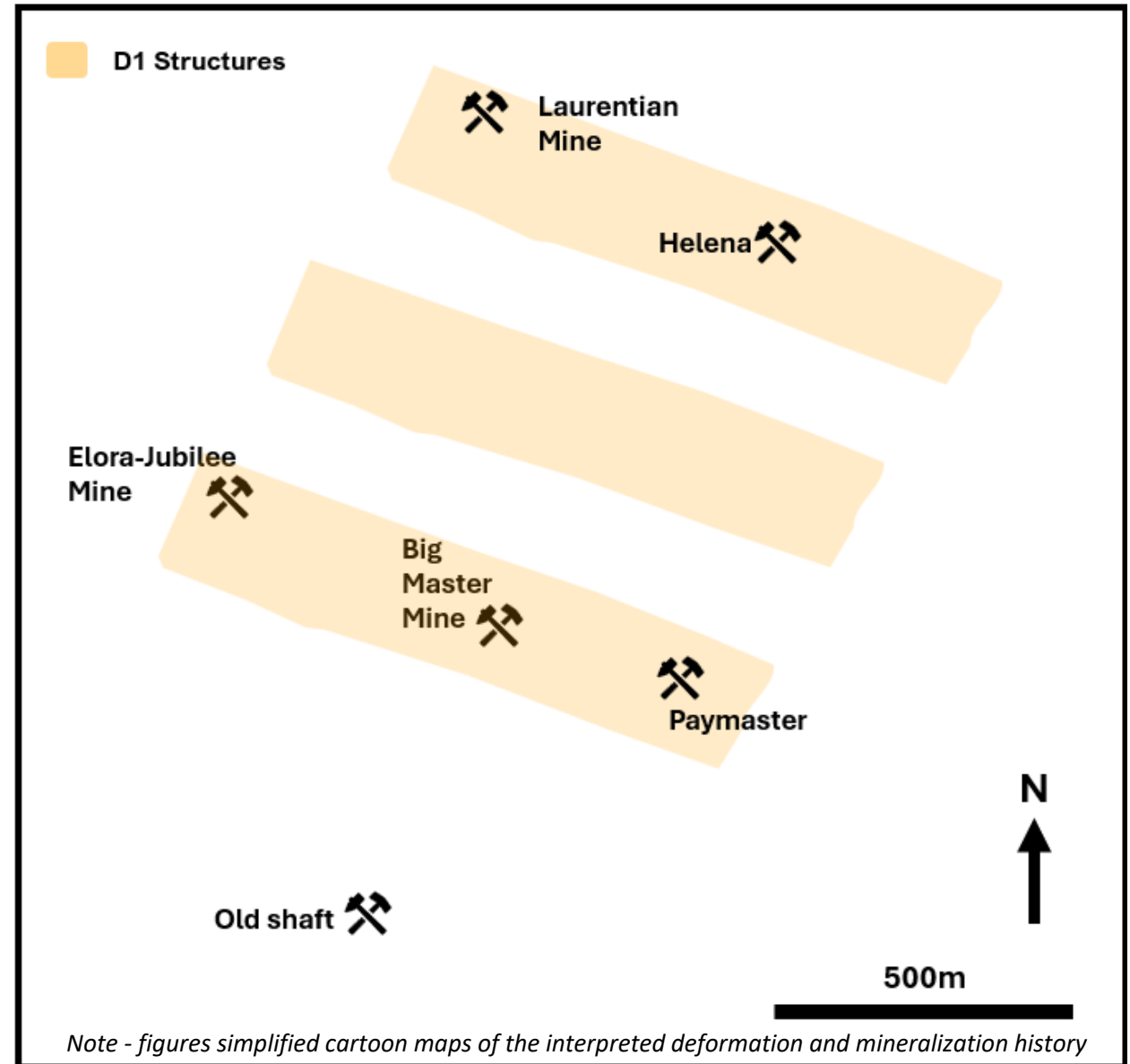
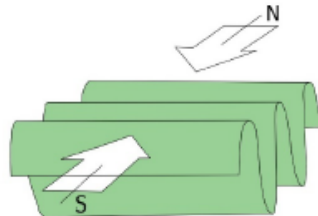
Gold Rock | Targeting High-Grade Structures

Stage #1

Deformation events shaped the **geometries** at Gold Rock and the emplacement of **Gold**

D1 - The first phase of deformation created **folding** and **~east-west trending structure**

D1 – Preparation of rocks for future mineralization through **alteration** and **early mineralization** in some areas



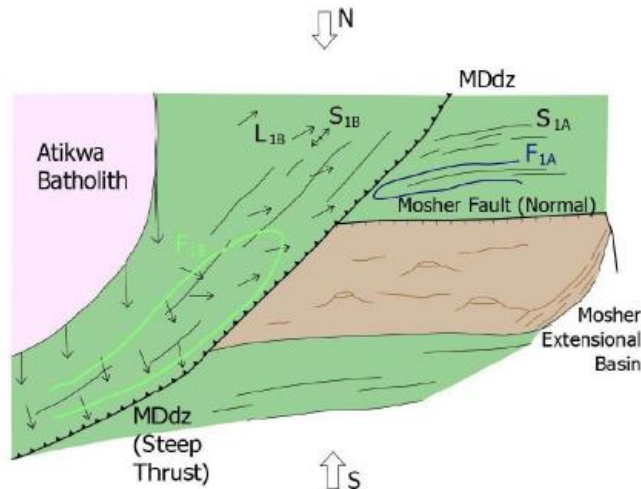
Gold Rock | Targeting High-Grade Structures

Stage #2

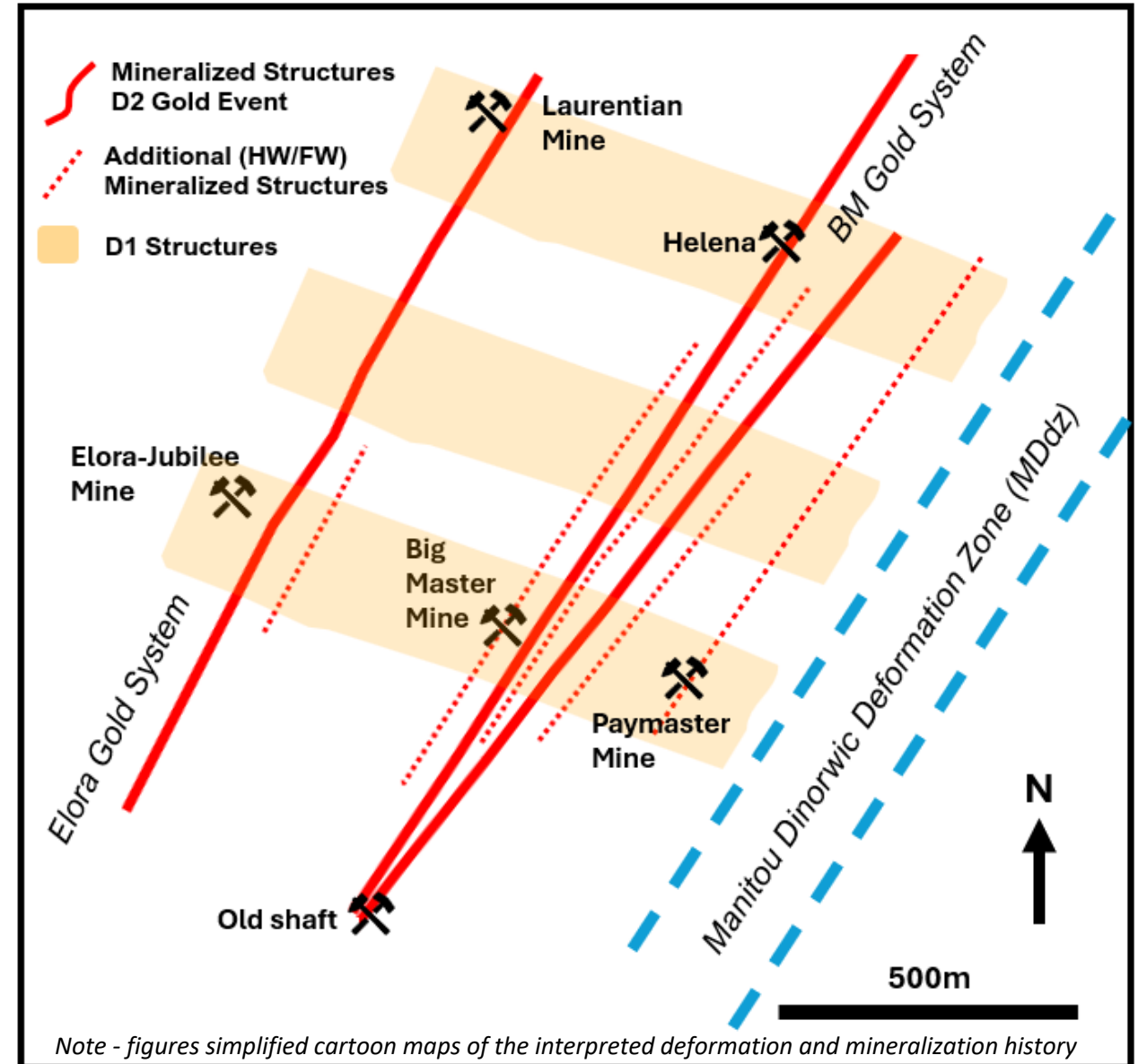
D2 - The second phase of deformation created
Manitou Dinorwic deformation zone (MDdz)
Northeast trending structures

D2 – Gold Mineralization along Northeast
trending **shear zones** and **veins structures**
Elora Gold & Big Master Gold Systems

Continent-Arc
Collision
Peak Metamorphism
Local Extension



DRYDEN
GOLD CORP

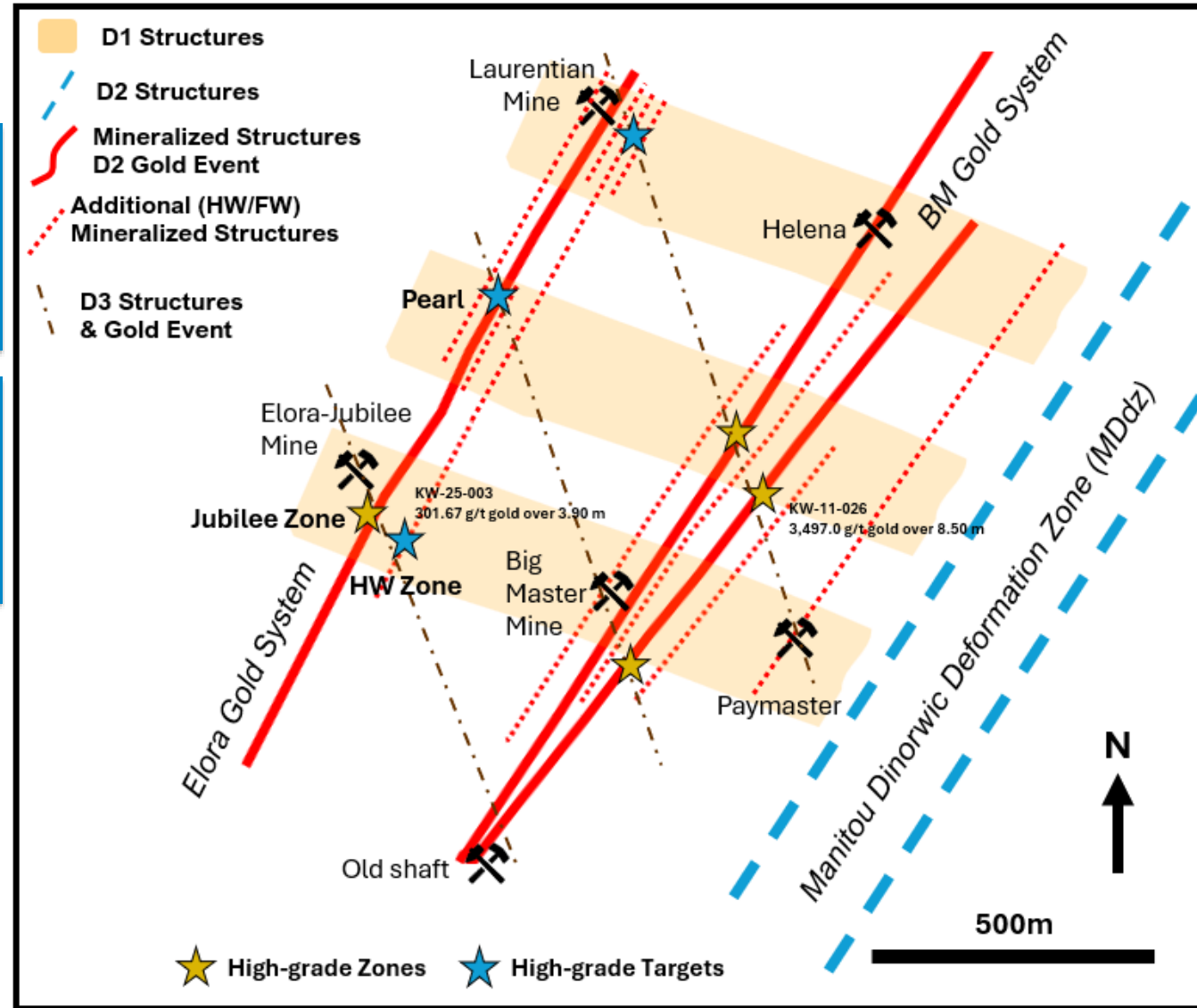
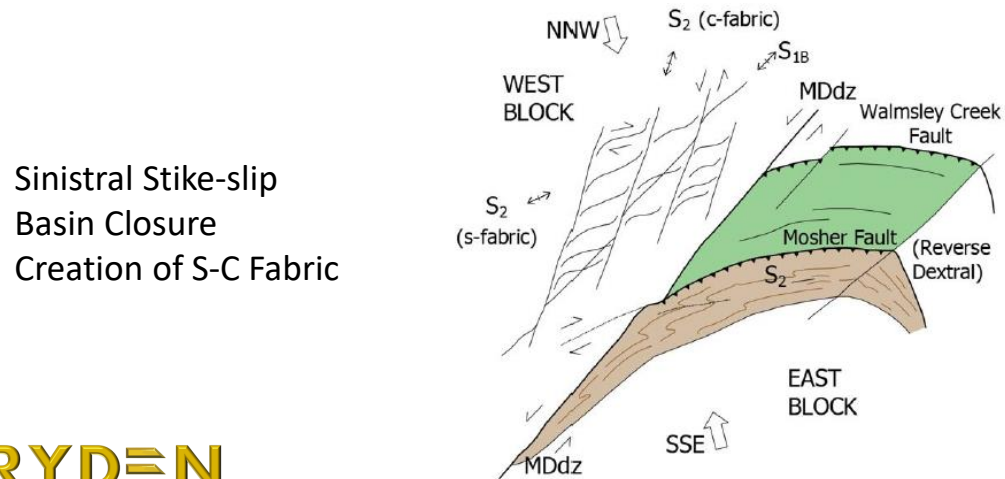


Gold Rock | Targeting High-Grade Structures

Stage #3

D3 - The third phase of deformation created S-C fabric with the
~ **North-south structures**

D3 – Gold Mineralization in this phase reused previous structures and localized high-grade new ~**North-south structures**



Note - figures simplified cartoon maps of the interpreted deformation and mineralization history