



**RACKLA
METALS INC**

**Expanding The Boundaries of the Tombstone Gold Belt
into the North-West Territories**

BOOTS ON THE GROUND - MAKING DISCOVERIES



Forward Looking Statements & Qualified Person

Certain statements contained in this presentation constitute forward-looking statements within the meaning of Canadian securities legislation. All statements included herein, other than statements of historical fact, are forward-looking statements which may include, without limitation, statements about Rackla Metals Inc. (TSX-V: RAK) (the "Company") plans for its investments and properties; the Company's business strategy, plans and outlook; the merit of the Company's investments and properties; timelines; the future financial performance of the Company; expenditures; approvals and other matters. Often, but not always, these forward-looking statements can be identified by the use of words such as "estimate", "estimates", "estimated", "potential", "open", "future", "assumed", "projected", "used", "detailed", "has been", "gain", "upgraded", "offset", "limited", "contained", "reflecting", "containing", "remaining", "to be", "periodically", or statements that events, "could" or "should" occur or be achieved and similar expressions, including negative variations.

Forward-looking statements involve known and unknown risks, uncertainties and other factors which may cause the actual results, performance or achievements of the Company to be materially different from any results, performance or achievements expressed or implied by forward looking statements. Such uncertainties and factors include, among others,

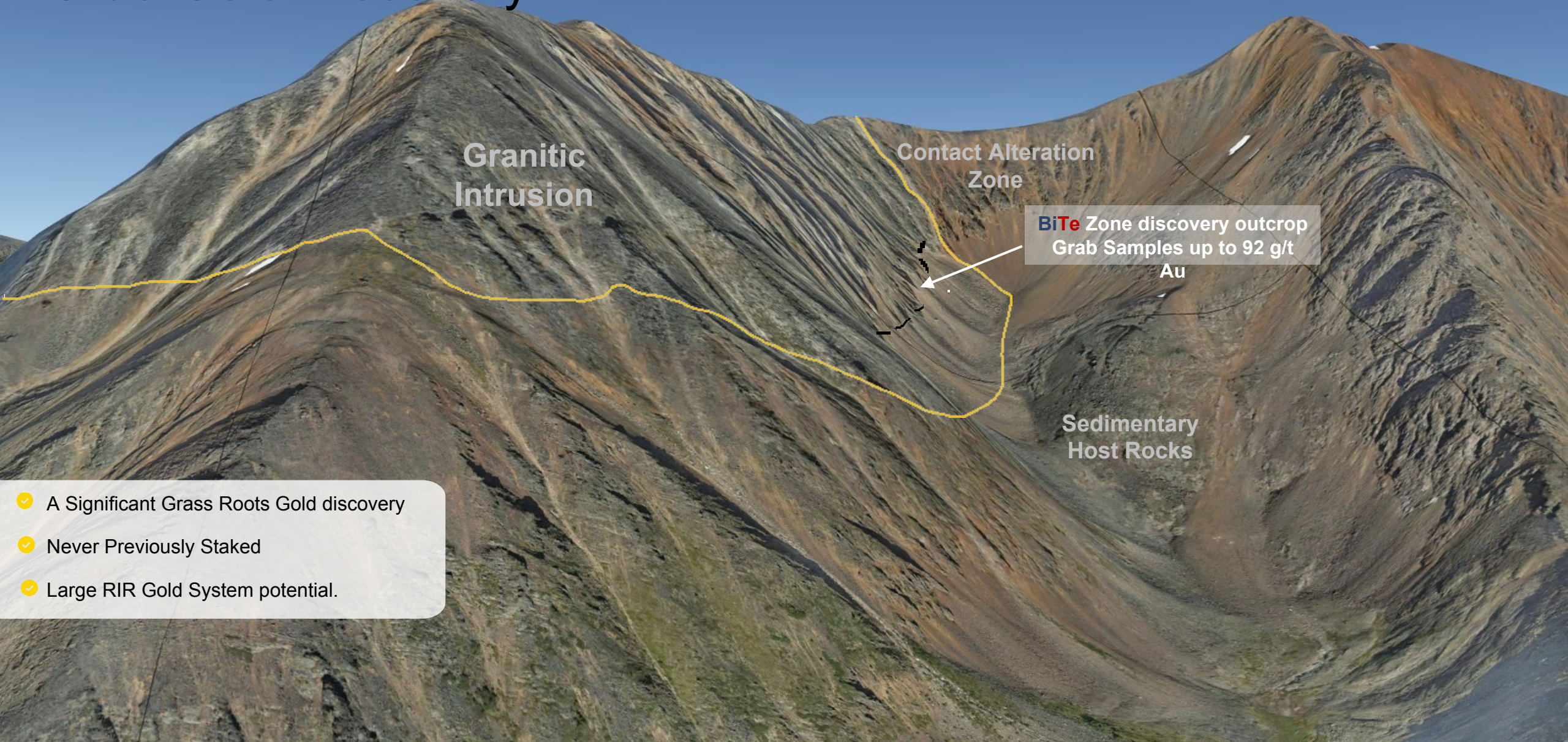
changes in general economic conditions and financial markets; the Company or any joint venture partner not having the financial ability to meet its exploration and development goals; risks associated with the results of exploration and development activities, estimation of mineral resources and the geology, grade and continuity of mineral deposits; unanticipated costs and expenses; and such other risks detailed from time to time in the Company's quarterly and annual filings with securities regulators and available under the Company's profile on SEDAR+ at www.sedarplus.ca. Although the Company has attempted to identify important factors that could cause actual actions, events or results to differ materially from those described in forward-looking statements, there may be other factors that cause actions, events or results to differ from those anticipated, estimated or intended.

Forward-looking statements contained herein are based on the assumptions, beliefs, expectations and opinions of management, including but not limited to expectations that the Company's activities will be in accordance with its public statements and stated goals; that all required approvals will be obtained; that there will be no material adverse change affecting the Company, its investments or properties; and such other assumptions as set out herein. Forward-looking statements are made as of the date hereof and the

Company disclaims any obligation to update any forward- looking statements, whether as a result of new information, future events or results or otherwise, except as required by law. There can be no assurance that forward-looking statements will prove to be accurate, as actual results and future events could differ materially from those anticipated in such statements. Accordingly, investors should not place undue reliance on forward-looking statements.

Under the terms of NI43-101, Scott Casselman, B.Sc, P. Geo. is Rackla's Qualified Person. Mr Casselman holds a B.Sc. degree from Carleton University, Ottawa, Canada. He has been involved in mineral exploration since 1985, working mostly in the exploration and development of precious metals and porphyry-style deposits, but also in magmatic nickel, uranium, diamond and industrial limestone exploration. Mr. Casselman has worked throughout the world including Indonesia, Turkey, Argentina, Alaska, and across Canada, including the three northern territories, Yukon, Northwest Territories and Nunavut. Mr. Casselman is a member of the Engineers and Geoscientists of BC (No 109803) and a "Qualified Person" in accordance with National Instrument 43-101 and has reviewed and takes responsibility for the technical information contained in this presentation.

Grad Gold Discovery



Granitic
Intrusion

Contact Alteration
Zone

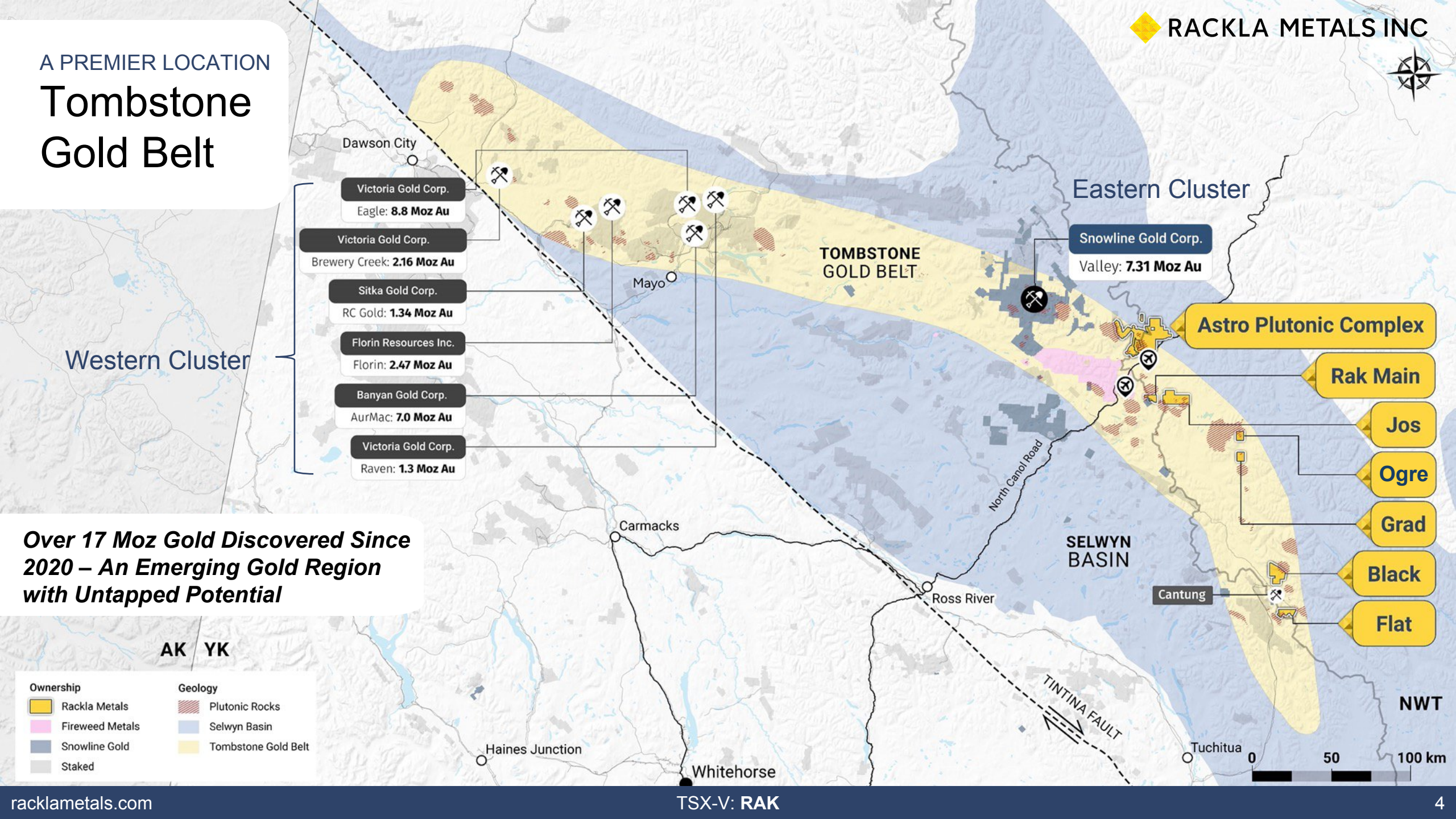
BiTe Zone discovery outcrop
Grab Samples up to 92 g/t
Au

Sedimentary
Host Rocks

- ✓ A Significant Grass Roots Gold discovery
- ✓ Never Previously Staked
- ✓ Large RIR Gold System potential.



A PREMIER LOCATION
Tombstone Gold Belt



- Victoria Gold Corp.
Eagle: **8.8 Moz Au**
- Victoria Gold Corp.
Brewery Creek: **2.16 Moz Au**
- Sitka Gold Corp.
RC Gold: **1.34 Moz Au**
- Florin Resources Inc.
Florin: **2.47 Moz Au**
- Banyan Gold Corp.
AurMac: **7.0 Moz Au**
- Victoria Gold Corp.
Raven: **1.3 Moz Au**

Eastern Cluster

- Snowline Gold Corp.
Valley: **7.31 Moz Au**

Astro Plutonic Complex

Rak Main

Jos



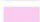




Ogre

Grad

Black

Flat

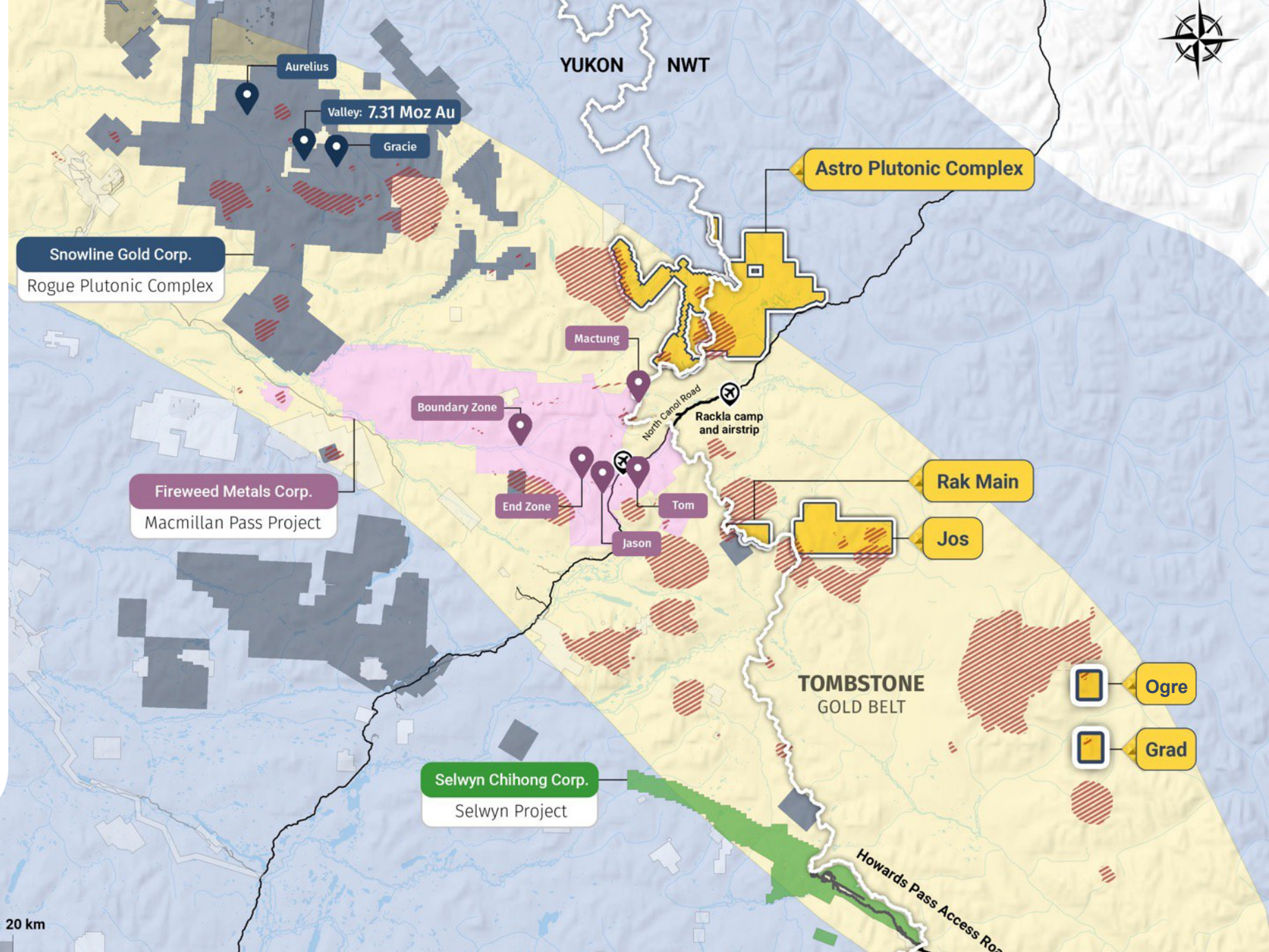
Over 17 Moz Gold Discovered Since 2020 – An Emerging Gold Region with Untapped Potential

Ownership	Geology
 Rackla Metals	 Plutonic Rocks
 Fireweed Metals	 Selwyn Basin
 Snowline Gold	 Tombstone Gold Belt
 Staked	

RACKLA METALS INC

EASTERN TOMBSTONE GOLD BELT A well-endowed mining district

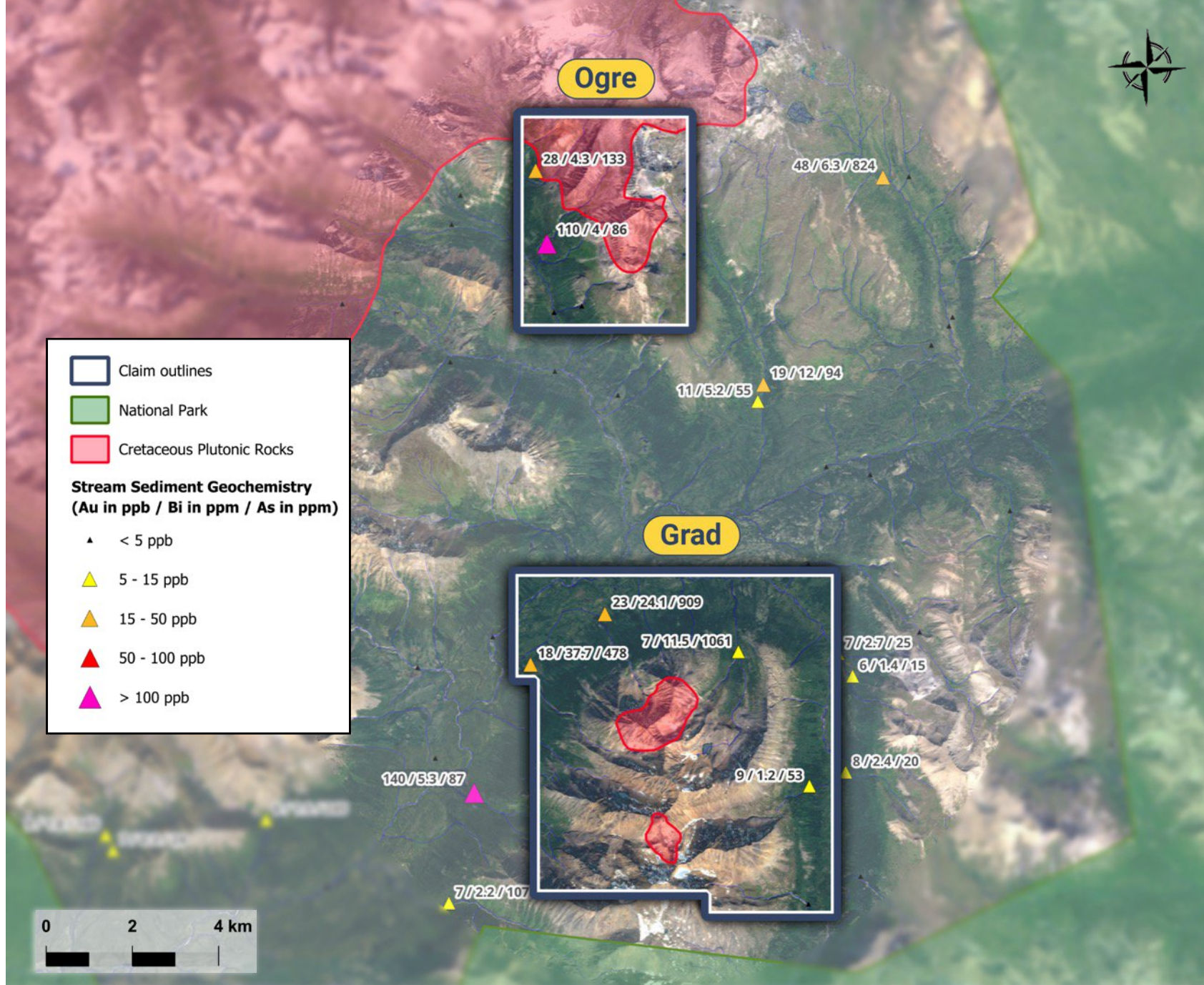
- Historically recognized for world-class base metals deposits
 - Mactung tungsten skarn
 - Tom, Jason, & Boundary Zn-Pb-Ag Sedex
 - Howard's Pass Zn-Pb-Ag Sedex
 - Cantung tungsten mine
- Significant gold discovery potential
 - Snowline Gold's discovery at Valley (2021) has already defined a 7.31 Moz Au resource
 - Rackla has secured a dominant land position over prospective Cretaceous intrusions east of the Snowline discovery in the NWT.
- Tremendous potential in an underexplored region
 - Minimal historical gold exploration in Eastern Belt, NWT- despite highly prospective geology



Grad Property, NWT

Intrusive-hosted high-grade gold

- ✓ The region was opened for industrial development in July 2024 following the completion of the Sahtu Regional Land Use Plan.
- ✓ Rackla identified the potential for RIRGS following a review of government regional stream sediment geochemistry (RGS) and Mineral Potential Assessments.
- ✓ The initial grassroots exploration program involved stream sediment sampling and talus sampling.
- ✓ This work led to the discovery of the BiTe zone.
- ✓ Follow-up work consisted of airborne geophysics and a photogrammetry survey.
- ✓ A second unmapped intrusive body was identified.

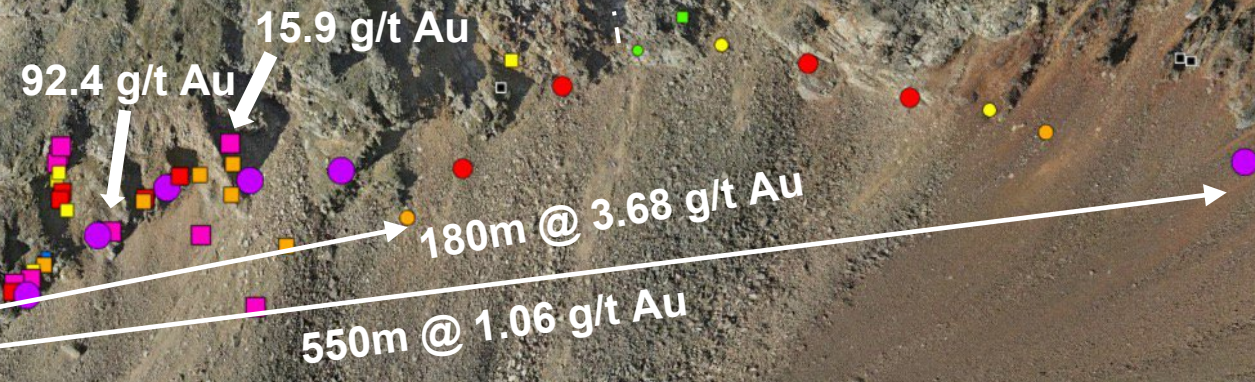


The BiTe Zone

- ✓ Large mineralizing system discovered outcropping with NO history of exploration – A new gold discovery in NWT.
- ✓ Talus-fine anomaly of 1.06 g/t Au / 550 m, including 3.68 g/t Au / 180 m.
- ✓ Initial prospecting returned multi-gram gold samples, up to 92.4 g/t Au.
- ✓ Geochemical association confirms a Reduced Intrusion Related Gold System – highly anomalous Bi, Te, associated with Au.

Altered and mineralized granite cliff face

Fresh granite



RACKLA METALS INC

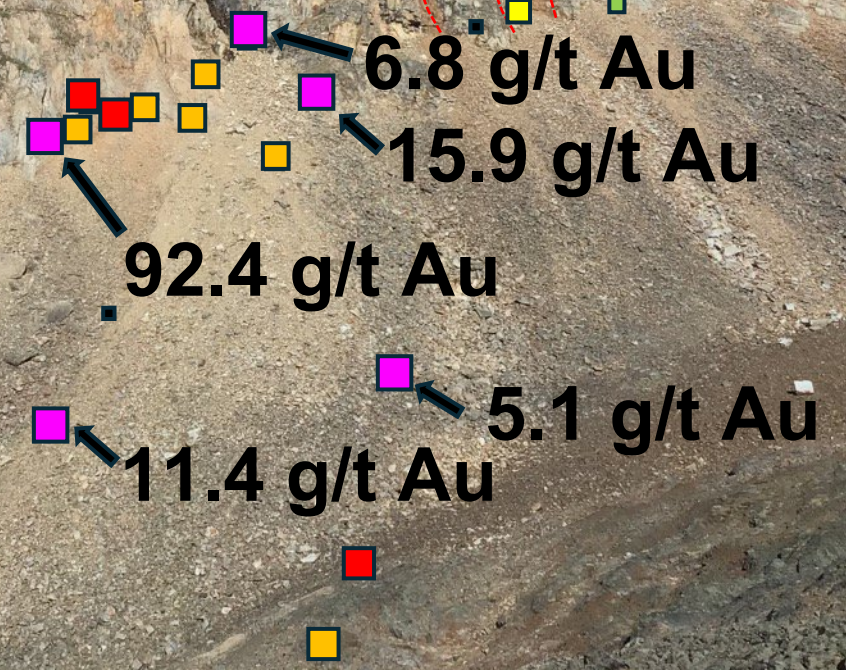
- Follow-up sampling returned numerous samples greater than 1 g/t Au over 2m channels of the outcrop.
- A 40 m trench returned 38 m grading 1.8 g/t gold averaging 450 ppm bismuth and 25 ppm tellurium.

Banded quartz-tourmaline veins

The BiTe Zone

Stockwork & sheeted quartz-tourmaline veining

38m @ 1.8 g/t Au



Extensive outcrop of shattered veined intrusive
returns multigram Au with Bi/Te



Continuity impressive at base of cliff



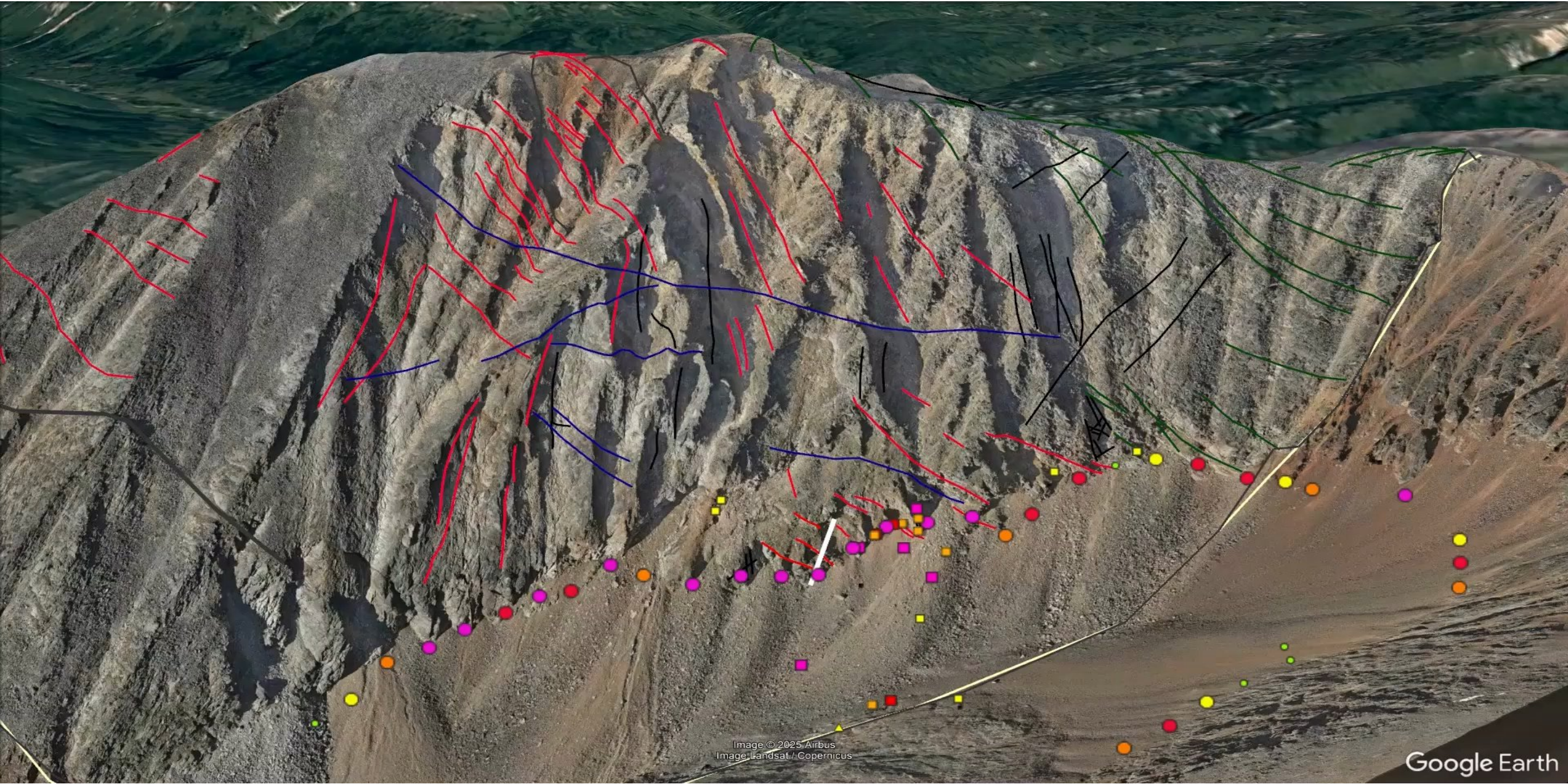
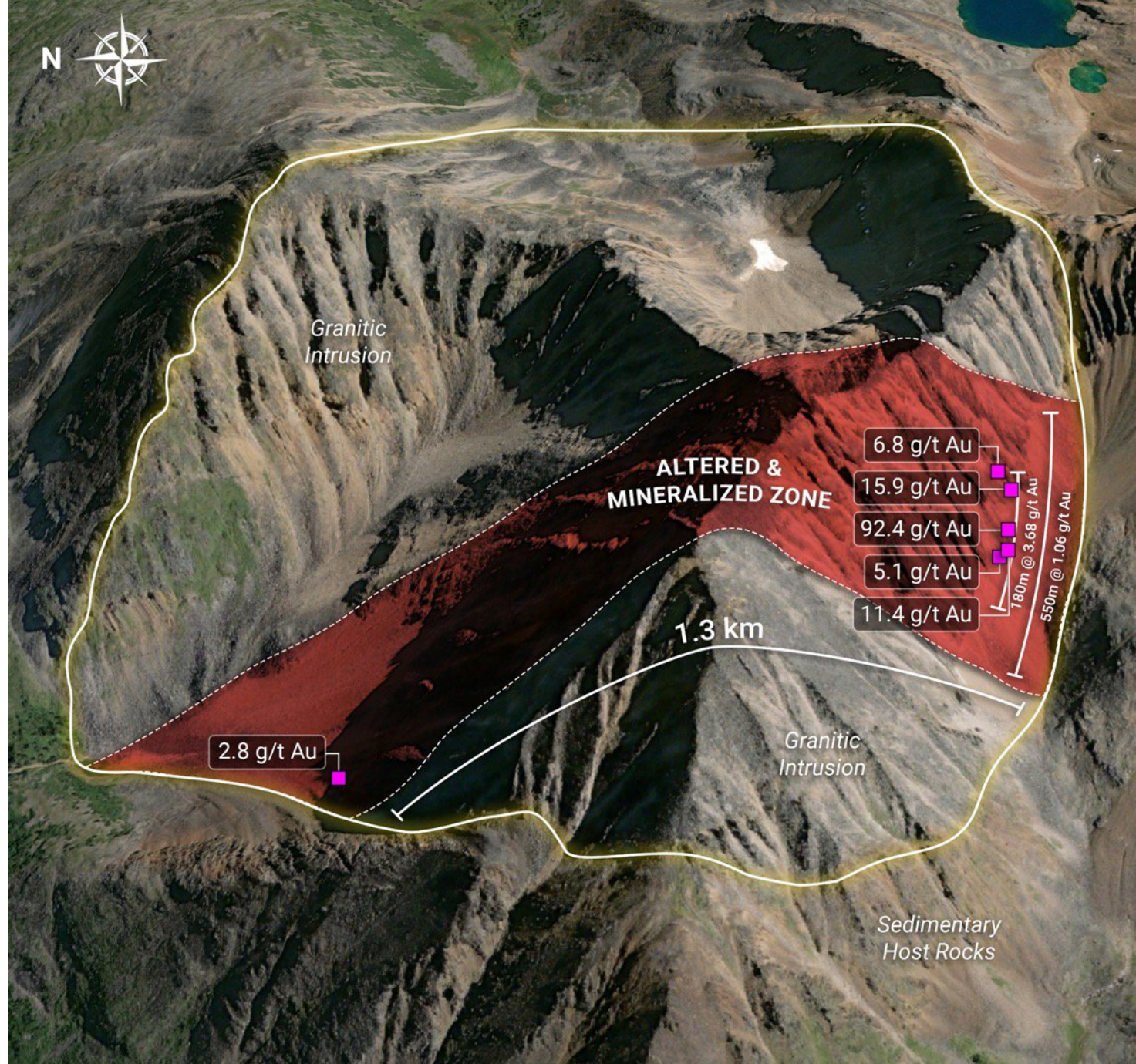


Image © 2025 Airbus
Image Landsat / Copernicus

Google Earth

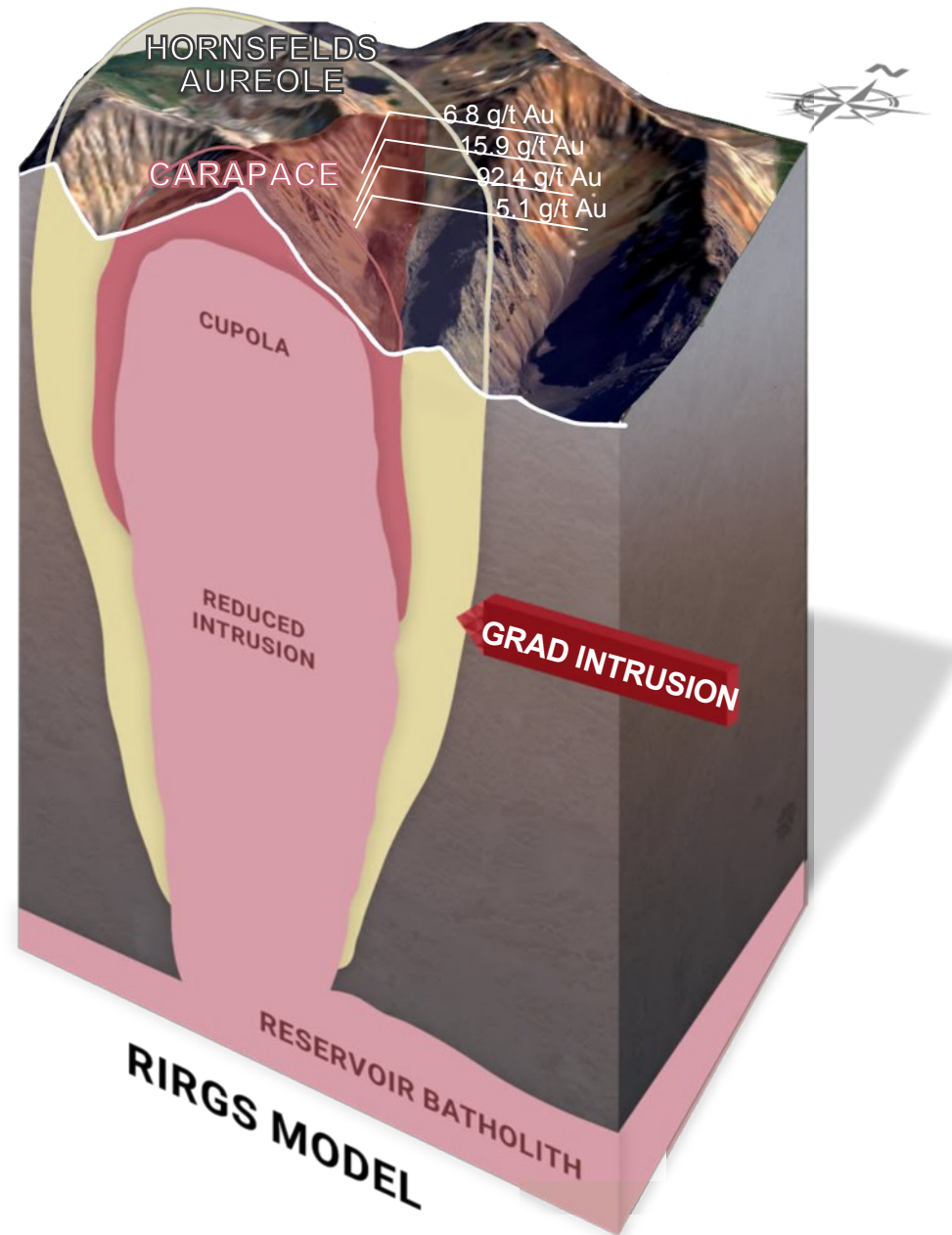
Extension of the BiTe Zone

- ✓ Extensive alteration and mineralization observed over:
 - Core 180m along the cliff base
 - 450m strike on South face.
 - 400 m vertically
- ✓ South side of Talus scree is outcropping intrusive grading 1.8 g/t Au. In contact with Sediments.
- ✓ Maiden drill program to commence in June 2025 at Cliff base
- ✓ Sampling of Ridge top concurrent with drilling.
- ✓ Float boulders from North side of ridge with same geochemistry Au/Bi/Te + As.



A deeper look

Grad Intrusion Block Model



TIMELINE

Upcoming Catalysts

2025 catalysts are:

1. Grad Project

- Planned drill program at the main BiTe Zone at Grad—mid June 2025
- Sampling the ridge top and face, 450m Stike-350m vertical extension.
- Trenching and drilling the south extension, sediment contact.
- Advancing the Grad intrusive.

2. Make new discoveries with “boots-on-ground” prospecting.

3. Ongoing district consolidation & additional strategic claim acquisition.

Highlights of a Tier 1 Team & Assets

✓ Leadership track record of value creation

🏆 A Gold Group company—discovery is our business

🔍 Highly promising and under-explored land package near a major discovery



Capital Structure

TSX-V: RAK

Basic Shares Outstanding **107.51M**

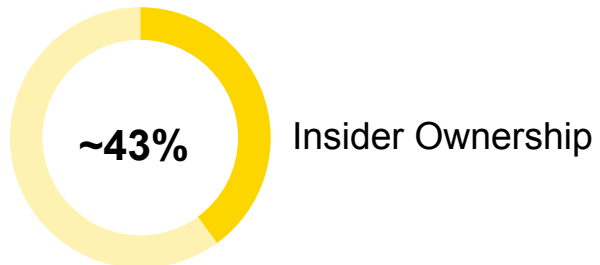
Warrants **44M**

Incentive Stock Options **2.89M**

Fully Diluted **154.40M**

Cash **\$3.0M**

**As of Feb 20th, 2025*





Top Tier Leadership with a History Of Discoveries



Simon Ridgway FOUNDER, CEO & DIRECTOR

Mr. Ridgway is a successful prospector and mining financier, gaining his initial experience with grass roots mineral exploration. Starting out as a prospector in the Yukon Territory in the 70's, Simon and the teams under his guidance have discovered gold deposits in Honduras, Guatemala and Nicaragua and silver deposits in Mexico. Simon is a founder of Fortuna Silver Mines and Radius Gold, and the CEO of Volcanic Gold Mines.



Doug Murray PROJECT GEOLOGIST

Doug Murray has been working as an exploration geologist for 6 years with Gold Group on projects in the western US, Mexico, Guatemala, Peru, and northern Canada. Doug has a B.Sc. Honours from the University of Manitoba and is a registered G.I.T. with Engineers and Geoscientists BC.



Scott Casselman VP EXPLORATION

Mr. Casselman was the Head, Minerals Geology with the Yukon Geological Survey, having joined the Survey in 2015.

Previous to his work with the Survey, from 1985 – 2015, Mr. Casselman worked in mineral exploration on projects in Indonesia, Argentina, Turkey, Alaska and Canada, including working in the three northern territories; Nunavut, Northwest Territories and Yukon.



Armand Rey-pin PROJECT GEOLOGIST

Armand holds a B.Sc. and M.Sc. degrees in Geoscience and Mineral Resources from Institut Polytechnique UniLaSalle, France and a M.A.Sc. in Exploration from the University of Quebec in Chicoutimi. He is a registered E.I.T. with Engineers and Geoscientists BC. Armand has been involved in mineral exploration since 2018, exploring in Canada, Peru and Europe.



Top Tier Leadership with a History Of Discoveries



Sally Whittall CORPORATE SECRETARY

Sally has over 30 years experience in corporate compliance and securities regulations, and handles Rackla’s corporate regulatory work. Before joining the Gold Group, she spent six years working as a corporate securities legal assistant in a major Vancouver law firm. She has completed the Canadian Securities Course and is Corporate Secretary of the companies in the Gold Group. Sally has worked with Simon since 1994.



Kevin Bales CHIEF FINANCIAL OFFICER

Mr. Bales has 20 years of financial reporting experience in mining and information technology industries. He currently serves as CFO for several public junior exploration companies with operations in Canada, the U.S., Latin America, and Europe. Mr. Bales holds a Bachelor of Management degree with a major in accounting.



Amber Ridgway INVESTOR & COMMUNITY RELATIONS

Amber has been working with Gold Group since 2019 as Investor & Community Relations, implementing plans for corporate communications, as well as community engagement for projects in Northern Canada and Guatemala. Amber holds a B.Com. from the University of Victoria and has completed courses on the Toronto Stock Exchange/TSX Venture Exchange and ESG Reporting for Listed Companies.

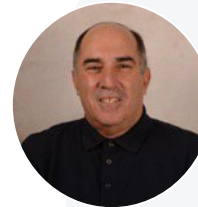
THE TEAM

Top Tier Leadership with a History Of Discoveries



Bruce Smith DIRECTOR

Bruce Smith, Member of the Australian Institute of Geoscientists, has B.Sc. and M.Sc. degrees in Geology from Otago University, New Zealand and MEng Water and Environmental Resources, IHE Delft, Netherlands and is 43-101 QP Accredited. Bruce has been exploring for more than 20 years in Africa, Asia-Pacific, Europe, North and South America. He has participated in gold discoveries in Guinea, Guatemala and Nicaragua and led the team that discovered the 200Moz Ag eq Chinchillas deposit in Argentina.



William Katzin DIRECTOR

Mr. Katzin is a graduate of the University of Cape Town, South Africa with a Bachelor of Commerce and Law degree. He is a member of the Institute of Chartered Accountants of British Columbia. He has been a partner in private practice with a Vancouver firm of Chartered Accountants since 1986 and has experience working with resource and exploration companies.



Timothy Beale DIRECTOR

Geologist with over 35 years of experience in mineral exploration and development with major and junior mining corporations, including previous senior exploration roles with Rio Tinto and Anglo American, and including 20 years living and working in the Central Andes of South America. Consultant for Hochschild Mining in early 2000s in Argentina, CEO and director of a junior mining company in 2010s focused on early-stage exploration in Chile and elsewhere, and currently providing consultancy services to the exploration and mining industry.



David Cass DIRECTOR

With a MSc degree in Mineral Exploration and Mining Geology, Mr. Cass has nearly 25 years international exploration and mining industry experience in many countries including the America's, Australia, Turkey, Iran, South Africa and Eastern Europe. He spent 15 years with Anglo American, including 6 years as Exploration Manager of North America, and 4 years managing Anglo's programs in Peru. Mr. Cass is a member of the Association of Professional Engineers and Geoscientists of British Columbia, and a Fellow of the Society of Economic Geologists.



RACKLA METALS INC

1.604.801.5432

info@racklametals.com

1000-1111 Melville St.
Vancouver, BC, V6E 3V6

