

Prospect Generator Focused on Precious and Base Metals in South America

Q3 2026

CORPORATE PRESENTATION





Forward-Looking and Cautionary Statements

Forward Looking and Cautionary Statements This presentation contains forward-looking statements and forward-looking information (collectively, “forward-looking statements”) within the meaning of applicable Canadian and U.S. securities legislation, including the United States Private Securities Litigation Reform Act of 1995 concerning the business, operations and financial performance and condition of Latin Metals Inc. (the “Company”). All statements, other than statements of historical fact, included herein including, without limitation, statements regarding future capital expenditures and financings (including the amount and nature thereof), anticipated content, commencement, and cost of exploration programs in respect of the Company's projects and mineral properties, anticipated exploration program results from exploration activities, the discovery and delineation of mineral deposits, resources and/or reserves on the Company's projects and mineral properties, and the anticipated business plans and timing of future activities of the Company, are forward-looking statements. Although the Company believes that such statements are reasonable, it can give no assurance that such expectations will prove to be correct. Often, but not always, forward looking information can be identified by words such as “pro forma”, “plans”, “expects”, “may”, “should”, “budget”, “scheduled”, “estimates”, “forecasts”, “intends”, “anticipates”, “believes”, “potential” or variations of such words including negative variations thereof, and phrases that refer to certain actions, events or results that may, could, would, might or will occur or be taken or achieved. Forward looking information involves known and unknown risks, uncertainties and other factors which may cause the actual results, performance or achievements of the Company to differ materially from any future results, performance or achievements expressed or implied by the forward looking information. Such risks and other factors include, among others, the ability of the Company to obtain sufficient financing to fund its business activities and plans, operating and technical difficulties in connection with mineral exploration and development and mine development activities for Company's projects generally, including the geological mapping, prospecting and sampling programs for the Company's projects, actual results of exploration activities, including the estimation or realization of mineral reserves and mineral resources, the timing and amount of estimated future production, costs of production, capital expenditures, the costs and timing of the development of new deposits, the availability of a sufficient supply of water and other materials, requirements for additional capital, future prices of precious metals, tantalum and lithium, changes in general economic conditions, changes in the financial markets and in the demand and market price for commodities, possible variations in ore grade or recovery rates, possible failures of plants, equipment or processes to operate as anticipated, accidents, labour disputes and other risks of the mining industry, delays in obtaining governmental and regulatory approvals (including of the TSX Venture Exchange), permits or financing or in the completion of development or construction activities, changes in laws, regulations and policies affecting mining operations, hedging practices, currency fluctuations, title disputes or claims limitations on insurance coverage and the timing and possible outcome of pending litigation, environmental issues and liabilities, risks related to joint venture operations, and risks related to the integration of acquisitions, as well as those factors discussed under the heading “Risk Factors” in the Company's most recent annual management's discussion and analysis and other filings of the Company with the Canadian Securities Authorities, copies of which can be found under the Company's profile on the SEDAR+ website at www.sedarplus.ca. Readers are cautioned not to place undue reliance on forward-looking statements. The Company undertakes no obligation to update any of the forward looking information in this presentation or incorporated by reference herein, except as otherwise required by law.

National Instrument 43-101 Eduardo Leon, VP of Exploration of the Company, and a Qualified Person as defined by National Instrument 43-101, has approved the scientific and technical information concerning the Company discussed in this presentation.

Cautionary Note to United States Investors As a Canadian issuer, the Company is permitted to prepare its public disclosures and this presentation in accordance with Canadian securities laws, which differ in certain respects from U.S. securities laws. In particular, this presentation uses the terms “mineral resource”, “measured mineral resource”, “indicated mineral resource” and “inferred mineral resource”. While these terms are recognized and required by Canadian securities laws, they are not recognized by the United States Securities and Exchange Commission (“SEC”) and are not normally permitted to be disclosed in SEC filings by U.S. companies. U.S. investors are cautioned not to assume that any part of a “mineral resource”, “measured mineral resource”, “indicated mineral resource” or an “inferred mineral resource” will ever be converted into a “reserve”. In addition, “reserves” reported by the Company under Canadian standards may not qualify as reserves under SEC standards. Under SEC standards, mineralization may not be classified as a “reserve” unless the mineralization can be economically and legally extracted or produced at the time the “reserve” determination is made. Accordingly, information contained or referenced in this presentation containing descriptions of the Company's mineral deposits may not be compatible to similar information made public by U.S. companies subject to the reporting and disclosure requirements of U.S. federal securities laws, rules and regulations. “Inferred mineral resources” have a great amount of uncertainty as to their existence and great uncertainty as to their economic and legal feasibility. It cannot be assumed that all or any part of an inferred mineral resource will ever be upgraded to a higher category. Historical results or feasibility models presented herein are not guarantees or expectations of future performance.

Currency All amounts in this presentation are expressed in Canadian dollars, unless otherwise stated.

THIS PRESENTATION IS NOT INTENDED AS, AND DOES NOT CONSTITUTE, AN OFFER TO SELL SECURITIES OF THE COMPANY.

The TSX Venture Exchange has not reviewed and do not accept responsibility for the accuracy or adequacy of this presentation, which has been prepared by the Company.



Prospect Generator Business Model in South America

 Focused on
Peru & Argentina

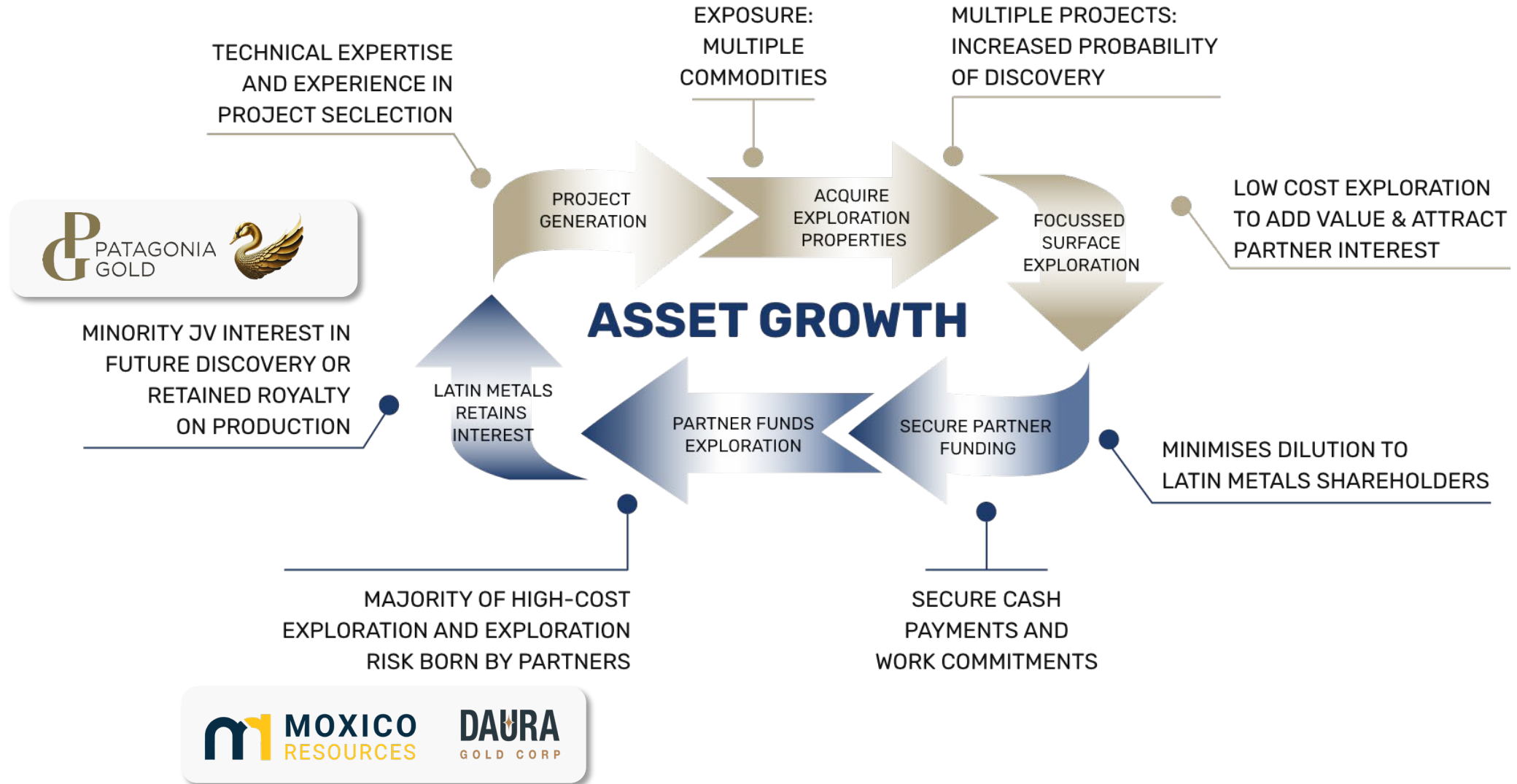
 Focused on
Shareholders

 Focused on
Copper – Gold - Silver





Prospect Generator Model





Potential for Asymmetric Returns

Outsized Upside

The model seeks **asymmetric returns**: Our downside is largely limited to the cost of generating projects, while the upside from a discovery can be transformative.

The Multiplier Effect

Every dollar deployed by Latin Metals is intended to attract multiple dollars from industry partners, **creating a multiplier effect that expands shareholder exposure to discovery while limiting dilution**

Asset Management

We operate a platform that **controls and advances a large portfolio of mineral assets** with very large annual exploration budgets, while funding only a fraction of that amount ourselves.

Portfolio Logic

Latin Metals follows the same portfolio logic as venture capital. Rather than betting the company on one project, **we build a portfolio of opportunities and let larger partners fund the high-risk exploration** while retaining meaningful upside.





Leveraging Partner Capital

Leverage Ratio

Approx. \$20 million in partner investment in 2026

Estimated CAD \$107 million investment through to 2030.

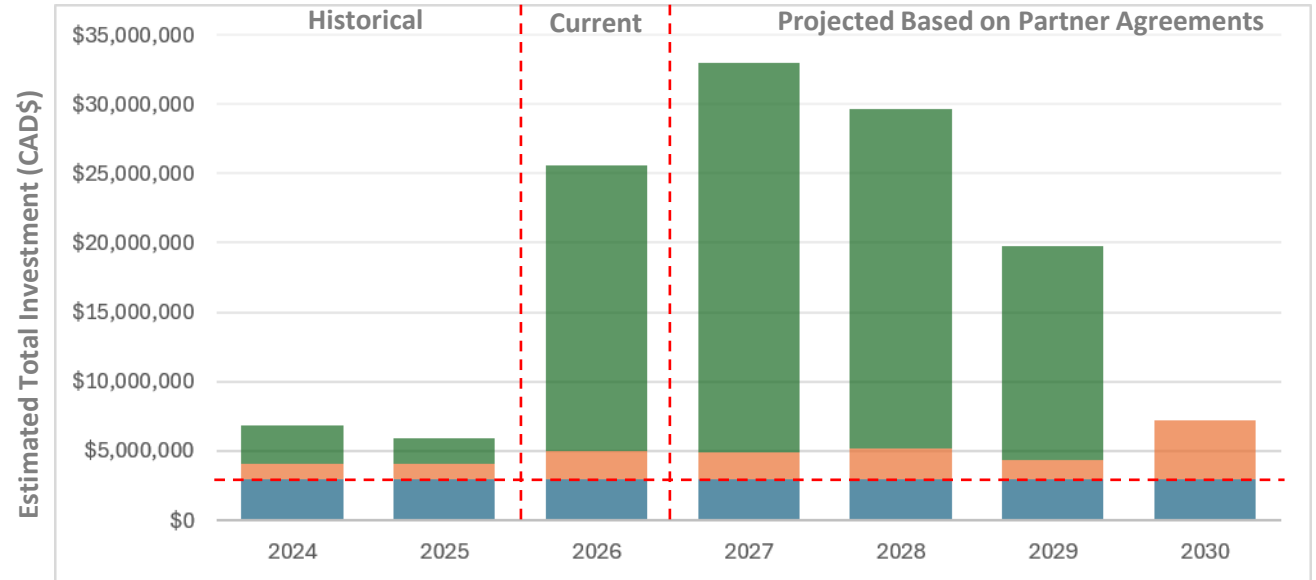
Leverage ratio of 7.5 projected from 2026 to 2030

Investment Assumptions

Estimates include option terms for Cerro Bayo, La Flora and Zaha projects only and assumes that options are exercised. Leverage ratio assumes that Latin Metals maintains CAD \$3 million annual expenditure.

Exclusions

Total investment does not include any potential exercise of top-up rights, royalty buy-backs, or other non-dilutive cash injections. Potential exercise of warrants or options is also not considered.



- Partner Exploration Investment
- Partner Direct Cash Investment
- Latin Metals Investment

Investment from 2024 and projected to 2030, including partner investment only for executed agreements. The company plans to secure agreements on additional projects but no potential investments attached to future agreements are included in the chart.

All investment estimates assume that option agreements are exercised. Partner direct cash investment is as per option agreement cash payment schedules. Partner exploration investment is based on all in per meter drill cost estimates ranging from USD \$550 to \$750 per meter on each project. Such per meter costs are designed to be inclusive of all drill costs and other technical reporting commitments.

No provisions for exercise of subsequent top-up rights or royalty buy-outs are included as these potential sources of non-dilutive investment are not easily predictable even if initial options are exercised. Total investments are similarly exclusive of potential warrant or option exercise.

There can be no assurances that option commitments will be completed or that exploration expenditure will be incurred.



Partner Funded Exploration

Previous and Current Strategic Partners

 **MOXICO**
RESOURCES

DAURA
GOLD CORP


YAMANAGOLD

 **VALE**

BARRICK


ANGLO**GOLD**ASHANTI

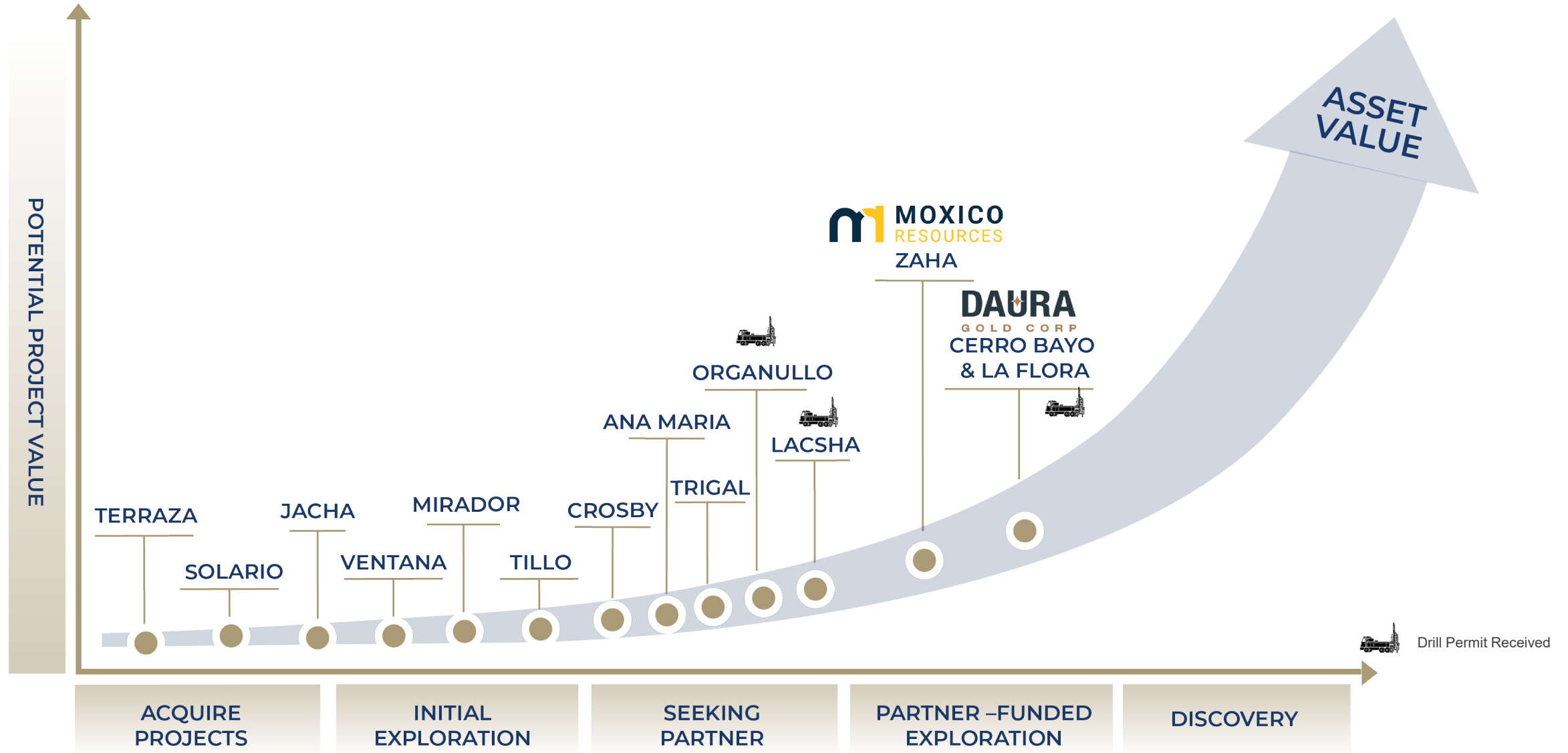
 **Newmont**TM

Latin Metals has built strong partnerships with leading mining and exploration companies through its prospect generator model.

Our alliances fund exploration while minimizing shareholder dilution and accelerating discovery.



Project Pipeline





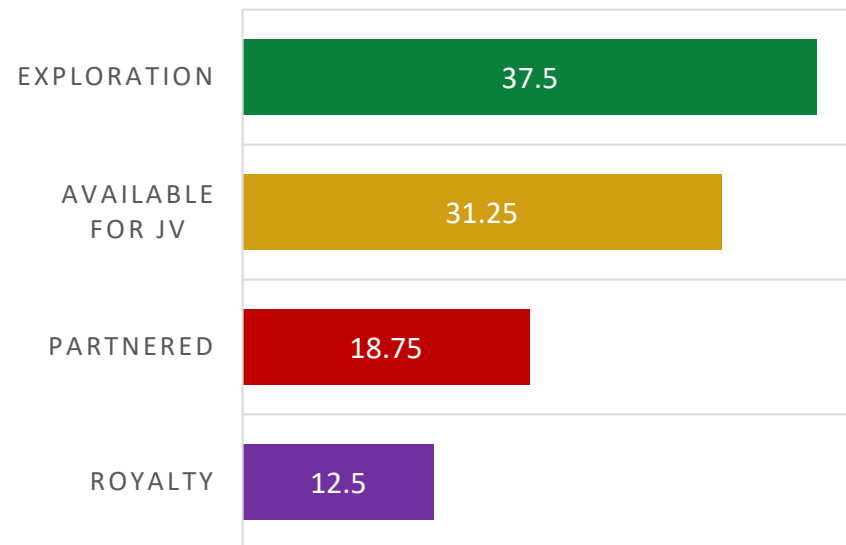
Project Portfolio

PROJECT	COMMODITY	COUNTRY	STATUS
Mina Angela	Gold	Argentina	● 1.25% NSR Royalty
El Quemado	Lithium	Argentina	● 2.0% NSR Royalty
Zaha	Copper - Gold	Argentina	● Optioned to Moxico Resources
 Cerro Bayo	Silver - Gold	Argentina	● Optioned to Daura Gold
La Flora	Silver - Gold	Argentina	● Optioned to Daura Gold
 Lacsha	Copper	Peru	● Partner-Ready
 Organullo	Gold	Argentina	● Partner-Ready
Trigal	Gold	Argentina	● Partner-Ready
Ana Maria	Gold	Argentina	● Partner-Ready
Crosby	Silver	Argentina	● Partner-Ready
Jacha	Copper	Peru	● Active Exploration
Tillo	Copper	Peru	● Active Exploration
Mirador	Copper	Argentina	● Active Exploration
Solario	Copper	Argentina	● Active Exploration
Ventana	Copper	Argentina	● Active Exploration
Terraza	Copper	Argentina	● Active Exploration



Drill Permit Received

LATIN METALS ASSET CLASS



“Latin Metals maintains a vibrant project pipeline, continuously generating and exploring new prospects to ensure a steady stream of joint venture opportunities.”

Our strategy revolves around dynamic portfolio management, where the optioning of projects to partners is seamlessly balanced with the introduction of fresh ventures, sustaining growth and value creation.”

- Keith Henderson, CEO, Latin Metals





Commodity Focus: Positioned for the Metals That Matter

GOLD

USD \$/oz



COPPER

USD \$/lb



SILVER

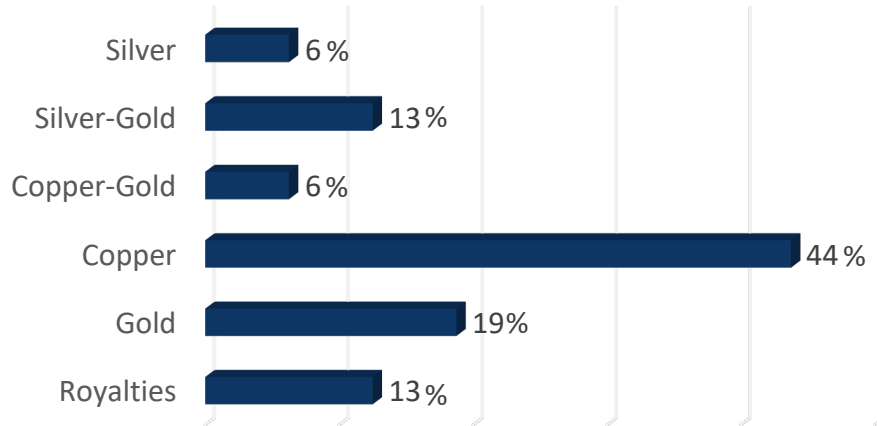
USD \$/oz



6/30/2026

Data from: www.tradingeconomics.com

LMS COMMODITY MIX

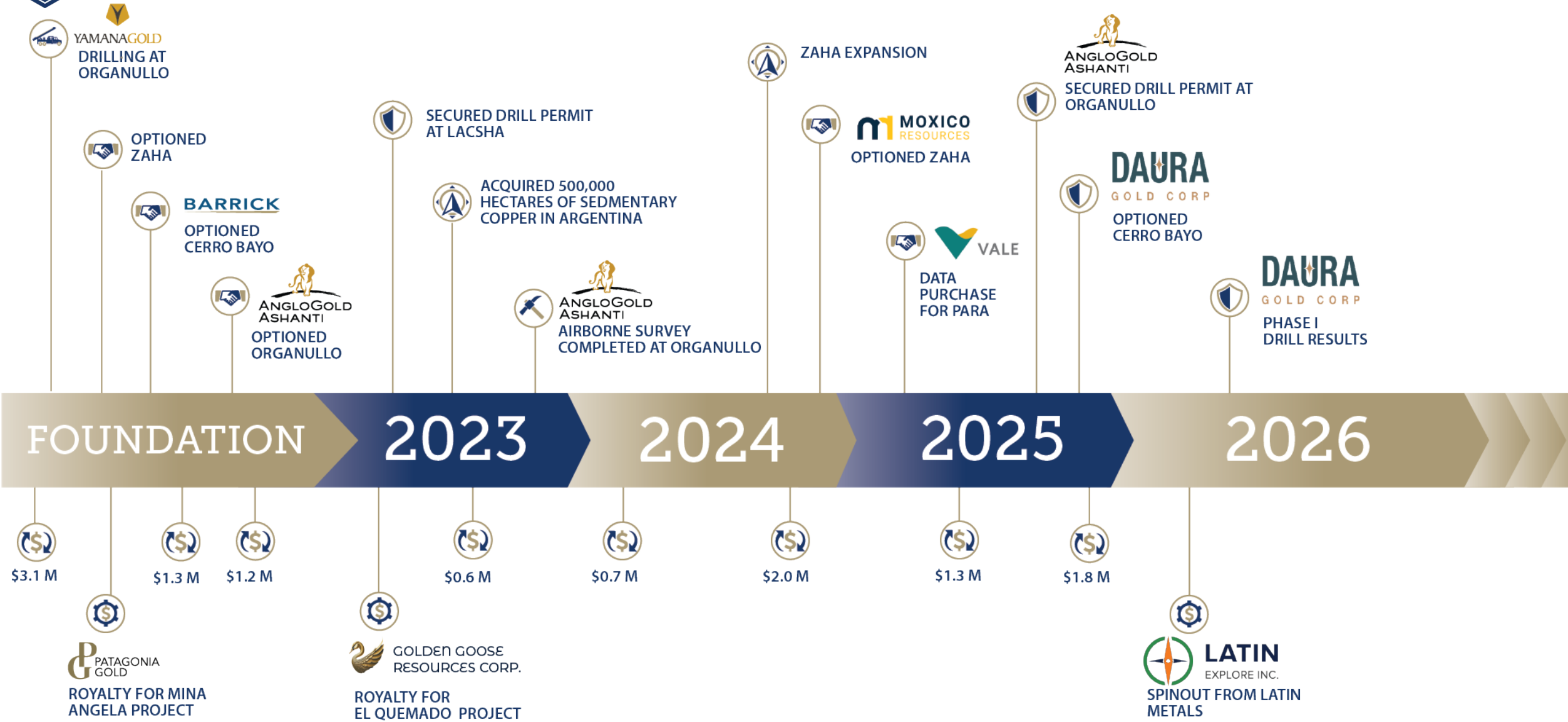


Key Catalysts Driving Value in 2026

- **Gold:** Fully drill permitted, drill-ready, and partner-ready gold exploration targets at **Organullo**.
- **Silver-Gold:** 100%-owned, fully drill-permitted **Cerro Bayo** project, optioned to Duara Gold — targeting high-grade silver and gold veins.
- **Copper:** Strategic exposure through **Zaha**, under option to Moxico Resources — advancing district-scale copper-gold exploration.
- **Diversified Portfolio:** Latin Metals offers exposure to 3 of the best-performing metals (Gold, Copper, Silver) through partner-funded exploration, minimizing dilution while maximizing upside



Timeline





Our Commitment to Sustainable Exploration

Creating meaningful and long-term benefits for all stakeholders



Community First

Engagement with local populations precedes exploration activities, guaranteeing community interests are embedded in our operational planning.

At Latin Metals, we are forging a legacy of sustainability and trust. Our approach intertwines advanced resource development with steadfast environmental stewardship and unwavering community alliances.

Every step in our journey is taken with the future in mind, ensuring the lands we explore are respected and the communities we partner with thrive.

– Keith Henderson, CEO, Latin Metals Inc.



Development

Our community agreements at Lacsha and Tillo exemplify our contribution to community infrastructure and agricultural projects, reflecting a partnership that extends beyond mining



Long-term Dedication

Our promise for continued exploration and environmental care at Lacsha is clear, with agreements that carry our commitment through to the end of 2026 and set the standard for industry best practices





Argentina

Embracing Mining & Investment



Export Infrastructure

Argentina is investing in modernized rail, port, and road networks, aimed at lowering transport costs for mining companies and speeding access to international markets. These upgrades reinforce the country's role as a reliable supplier in the global metals chain.



Pro-Market Reforms

The new administration has implemented currency, tax, and permitting reforms aimed at attracting foreign investment. With streamlined approval processes and more predictable access to foreign exchange, Argentina is creating an investor-positive climate in Latin America.



Stable Regional Governance

Mining-friendly provinces such as Salta, San Juan, and Santa Cruz continue to demonstrate consistent policy frameworks and strong local support for mining. This stability provides investors with confidence in long-term project development.



Influx of Investment

Global majors, including BHP, Glencore, First Quantum, and Chinese partners, are committing capital to Argentina's copper-gold belt. With the energy transition driving demand, Argentina is emerging as a preferred exploration jurisdiction.



Zaha Copper-Gold Project



Agreement with Moxico Resources

Stage 1: 75% interest for US\$2,775,000 cash, US\$4,633,000 cash to underlying vendors, 65,000 meters of drilling, and NI 43-101 Bankable Feasibility Study (estimate aggregate US\$65 million investment)

Stage 2: Option to top-up to 100% interest for greater of US\$10,000,000 or \$0.02/lb copper equivalent in Measured and Indicated categories, and 2% NSR royalty to Latin Metals



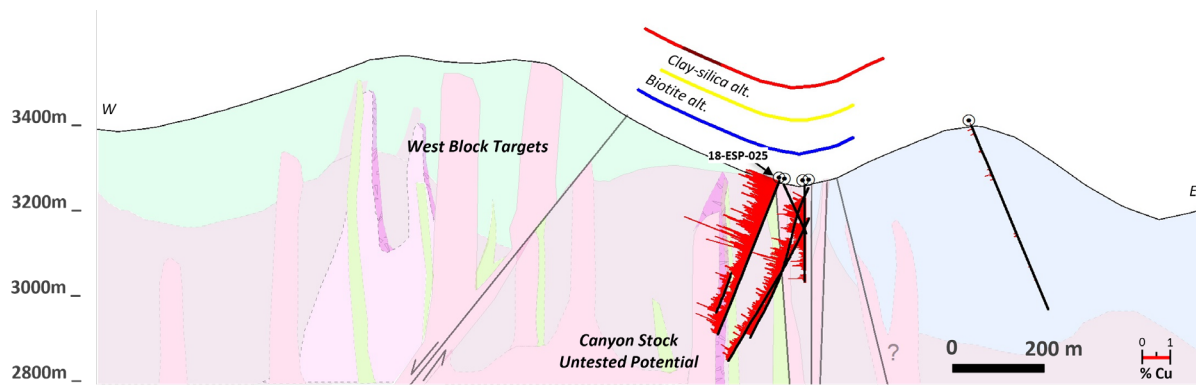
Discovery Drill Hole

From Surface:

387m @ 0.57% copper and 0.27 g/t gold

Catalyst:

2026 Drilling – 15,000M



For detailed option terms, please refer to Disclosure Notes.

Q1 2018 Ranking ¹	Company	Project	Copper (%)	Drill Intersection (m)	Copper (%) x (m) Thickness	Depth to Top of Intersection	Location
1	Nevsun Resources	Timok	0.77	847	652	1354	Serbia
2	SolGold	Cascabel	0.54	824	445	736	Ecuador
#3	Latin Metals	Zaha	0.57	387	221	Surface	Argentina
4	Orion Minerals	Prieska	2.39	81.6	195	152	South Africa
5	Orla Mining	Cerro Quema	1.54	124.5	192	75	Panama
6	Xanadu Mines	Kharmgtai	0.26	623.5	162	324	Mongolia
7	Sierra Metals	Yauricocha	1.48	99	147	337	Peru
8	Venturex Resources	Sulphur Springs	3.64	40	146	158	Australia
9	Surge Copper	Ootsa	0.27	537	145	350	BC, Canada
10	Ero Copper	MCSA Mining Complex	6.3	22.9	144	158	Brasil



All drilling to date has been completed in the valley, where alteration and mineralization is exposed at surface.

System open to the north



Cerro Bayo Silver-Gold Project



Agreement with Daura Gold

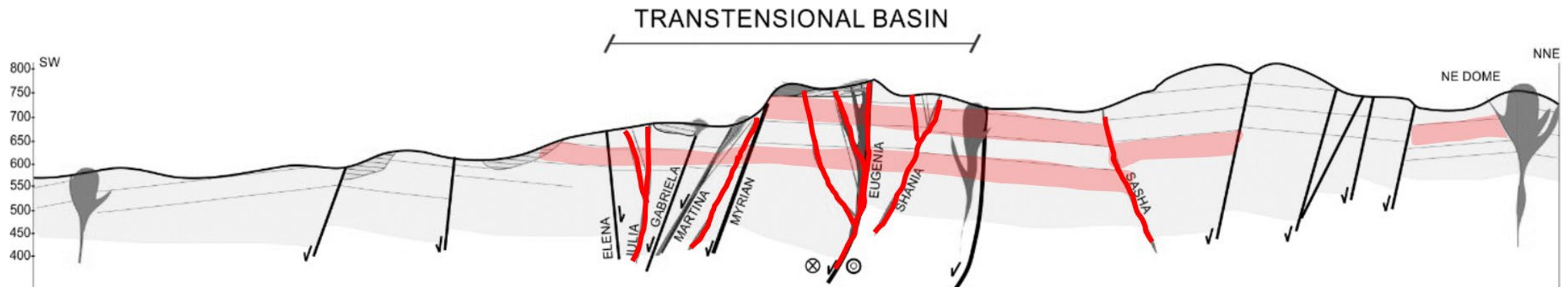
Stage 1: 75% interest for US\$1,700,000 cash to LMS, US\$400,000 assumed payments to the underlying vendor, completion of 28,000 m of drilling, and delivery of an NI 43-101 Technical Report with a Mineral Resource Estimate.

Stage 2: Option to increase to 80% interest by paying Latin Metals US\$7/oz Gold Eq (Measured & Indicated) and US\$5/oz Gold Eq (Inferred) contained in the resource estimate.



Project Highlights

- Located within the Deseado Massif, one of the world's most productive precious-metal belts (> 600 Moz silver, 20 Moz gold produced)
- Daura Gold is fully funding an aggressive 28,000 m drill program, aimed at defining high-grade vein targets across the Cerro Bayo and La Flora properties



For detailed option terms, please refer to Disclosure Notes.



Cerro Bayo Silver-Gold Project



Results from Initial Drill Program

Successfully intersected multiple zones of gold and silver mineralization

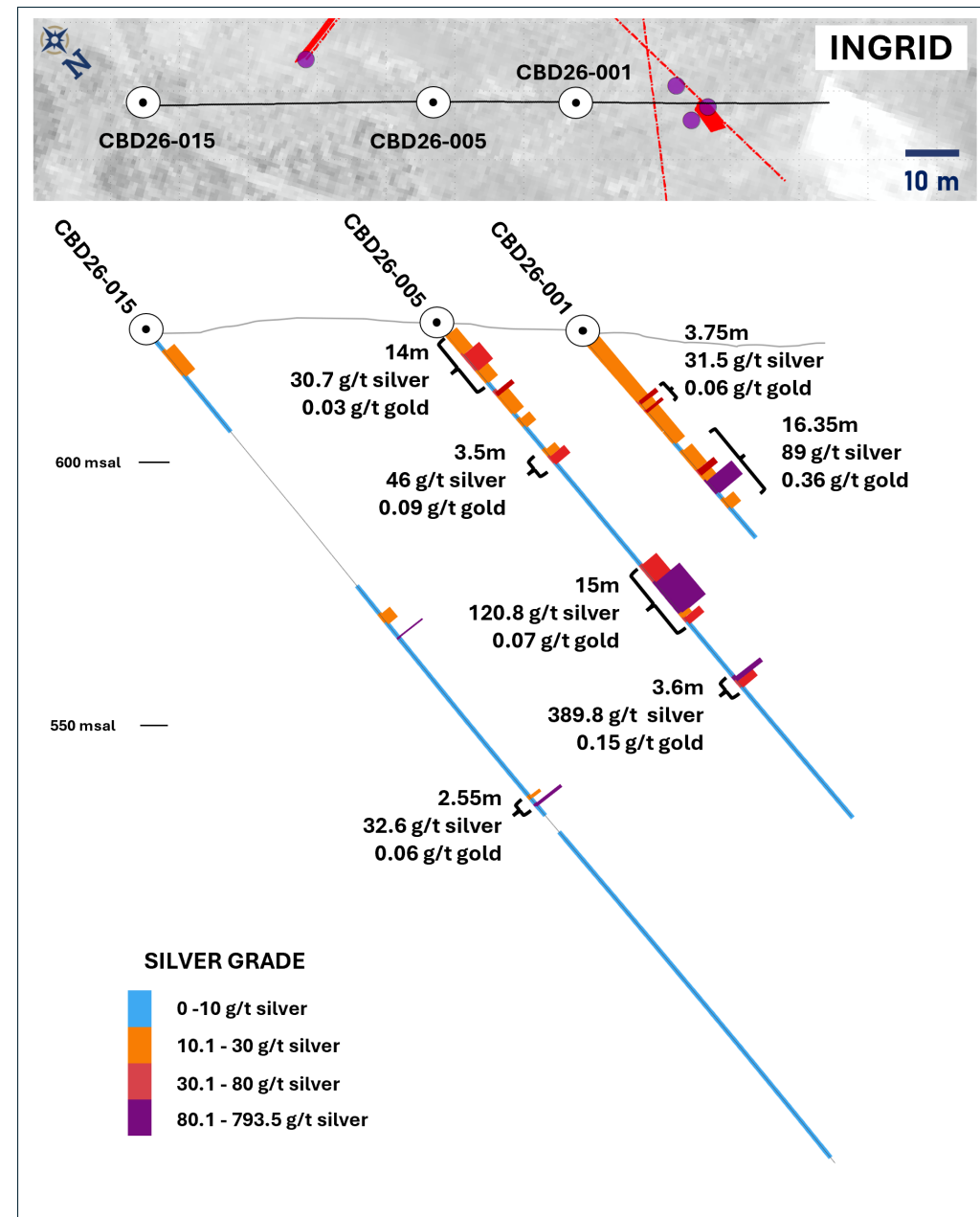
High grade intervals up to 8.83 g/t gold and 739 g/t silver

Confirms presence of large, fertile, low-sulphidation epithermal system in the Deseado Massif

Broad zones of silver mineralization beginning at surface in multiple holes at Ingrid Target – potential for bulk-tonnage mineralized zones

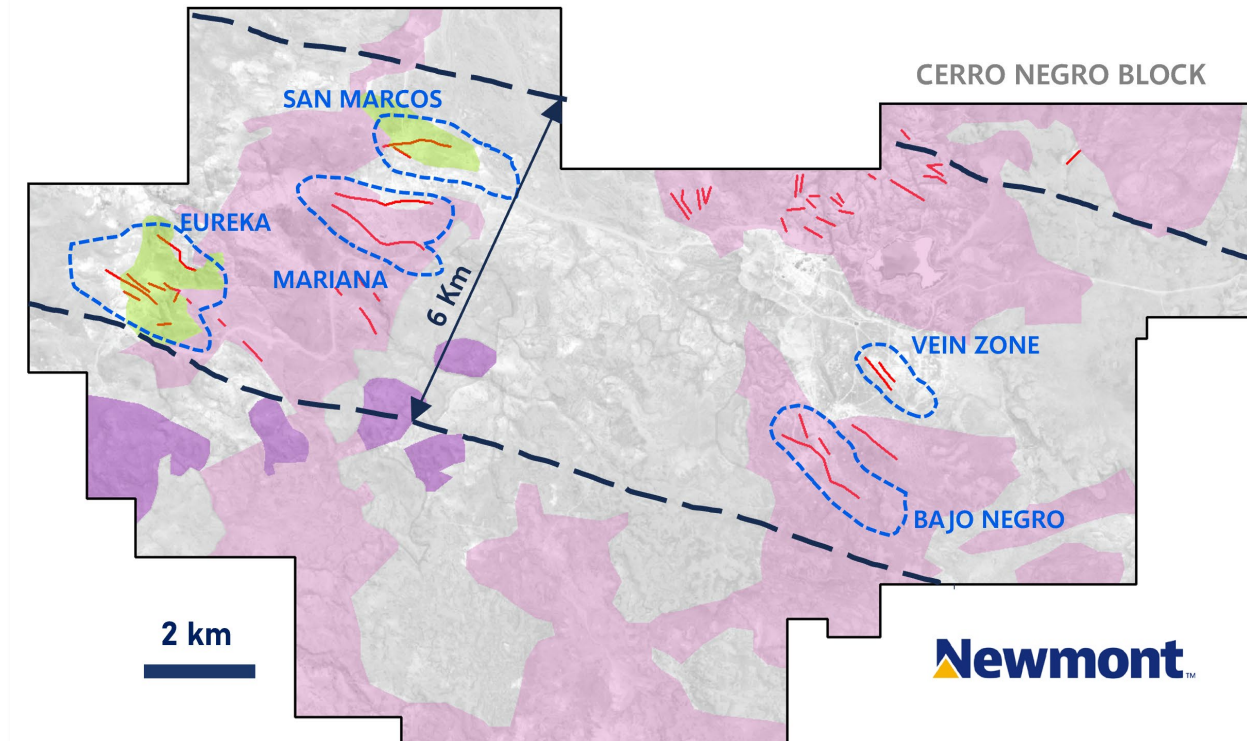
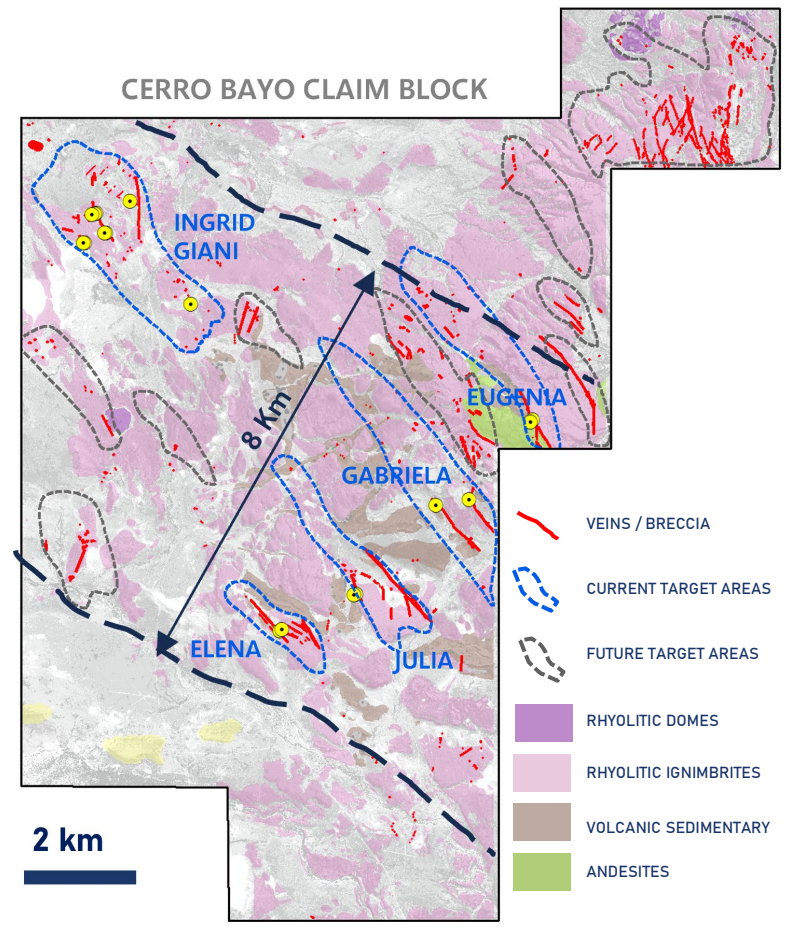
Catalyst: Q3 2026 Drilling

- Phase II drilling scheduled for Q3 2026
- Follow-up on early success at Cerro Bayo
- Initial testing at La Flora project where previous sampling returned up to 82 g/t gold within vein zones.





Cerro Negro Scale Comparison



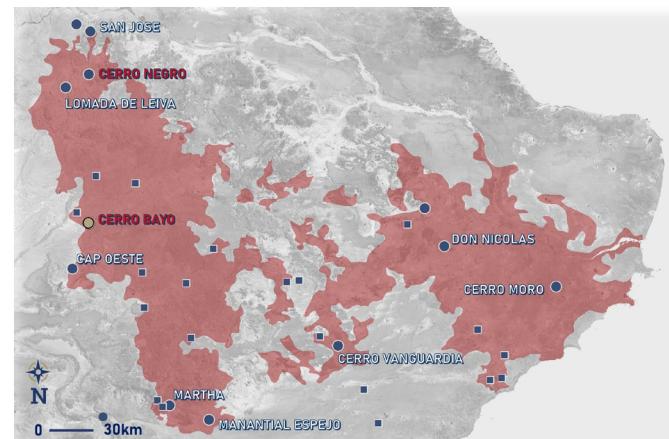
HISTORY OF CERRO NEGRO
Discovered by Andean

Goldcorp purchased Andean Resources in 2010

- US\$3.4 billion
- Indicated 2.54 Moz gold
- Inferred 0.52 Moz gold

Cerro Negros Deposit Characteristics:

- Structural corridor with multiple individual deposits
- Very high-grade gold
- Near-surface deposits amenable to open pit and underground
- High IRR, low CAPEX
- 200koz gold per annum
- Tier One gold asset – approx. 9 Moz total



Current Reserves (end 2024)

Current Proven & Probable Reserves
3.2 Moz @ 10.82 g/t gold
21.4 Moz @ 71.58 g/t silver

Current Resources (end 2024)

Measured and Indicated Resource
0.5 Moz @ 4.88 g/t gold
0.9 Moz @ 62.67 g/t silver
Inferred Resource
1.2 Moz @ 4.8 g/t gold
6.2 Moz @ 26.5 g/t silver

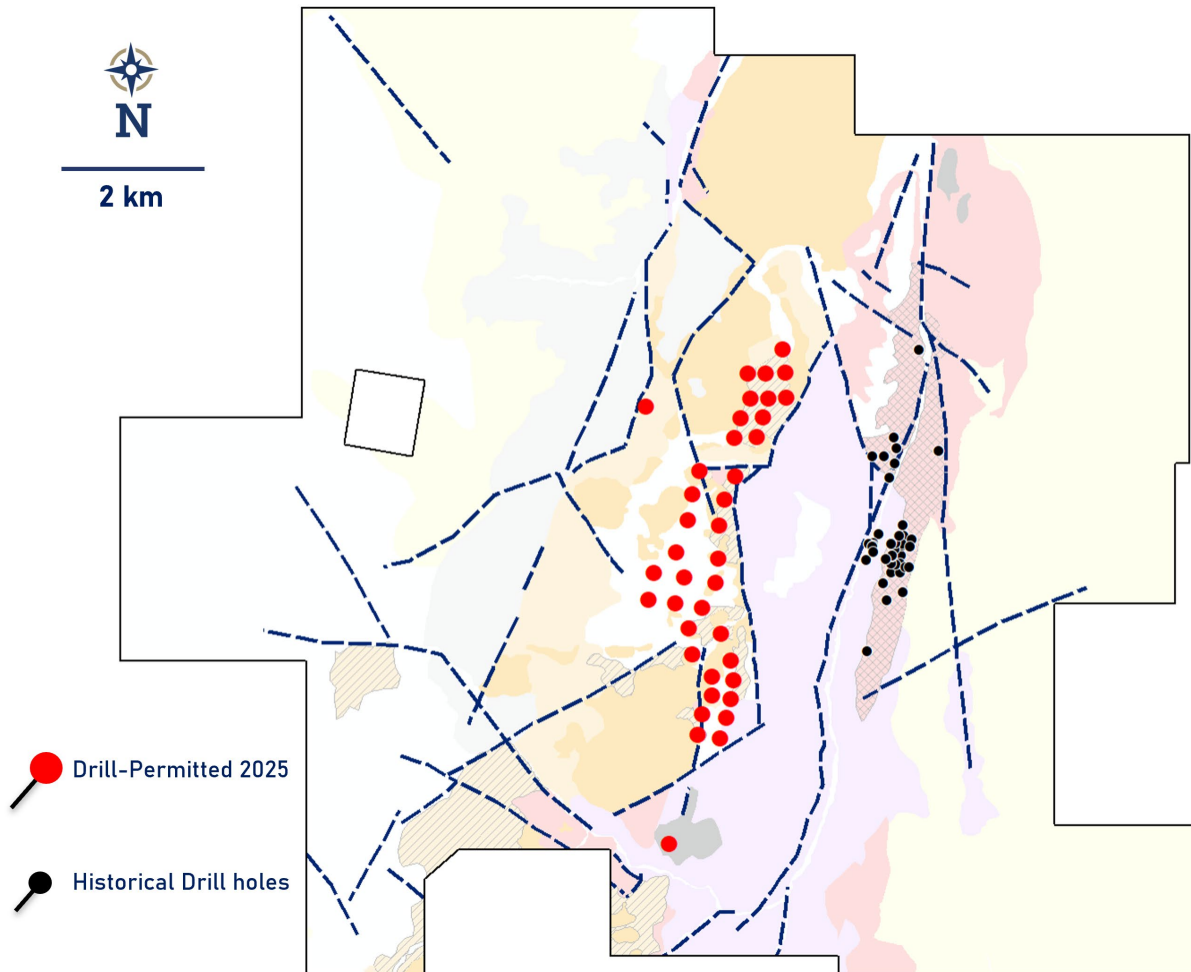
Readers are cautioned that in the Cerro Negro deposit is an adjacent property and that Latin Metals has no interest on or right to acquire any interest in the Cerro Negro deposit, and that mineral deposits on similar properties, and any production therefrom or economics thereto, are not in any way indicative of mineral deposits at Cerro Bayo or the potential production from, or cost or economics of, any future mining of any of Latin Metals' mineral properties.





Organullo Gold Project

Available
for
Partnership



Large, Untested Gold System

- 100%-owned and fully permitted gold project
- Previously optioned to AngloGold Ashanti who defined three priority targets targeting a Tier One gold discovery
- Technical analogy is Salares Norte deposit in Chile (Goldfields; proven & probable reserve, 3.4Moz @ 5.36 g/t gold)

Permitting:

- Fully drill permitted in 2025

Catalyst:

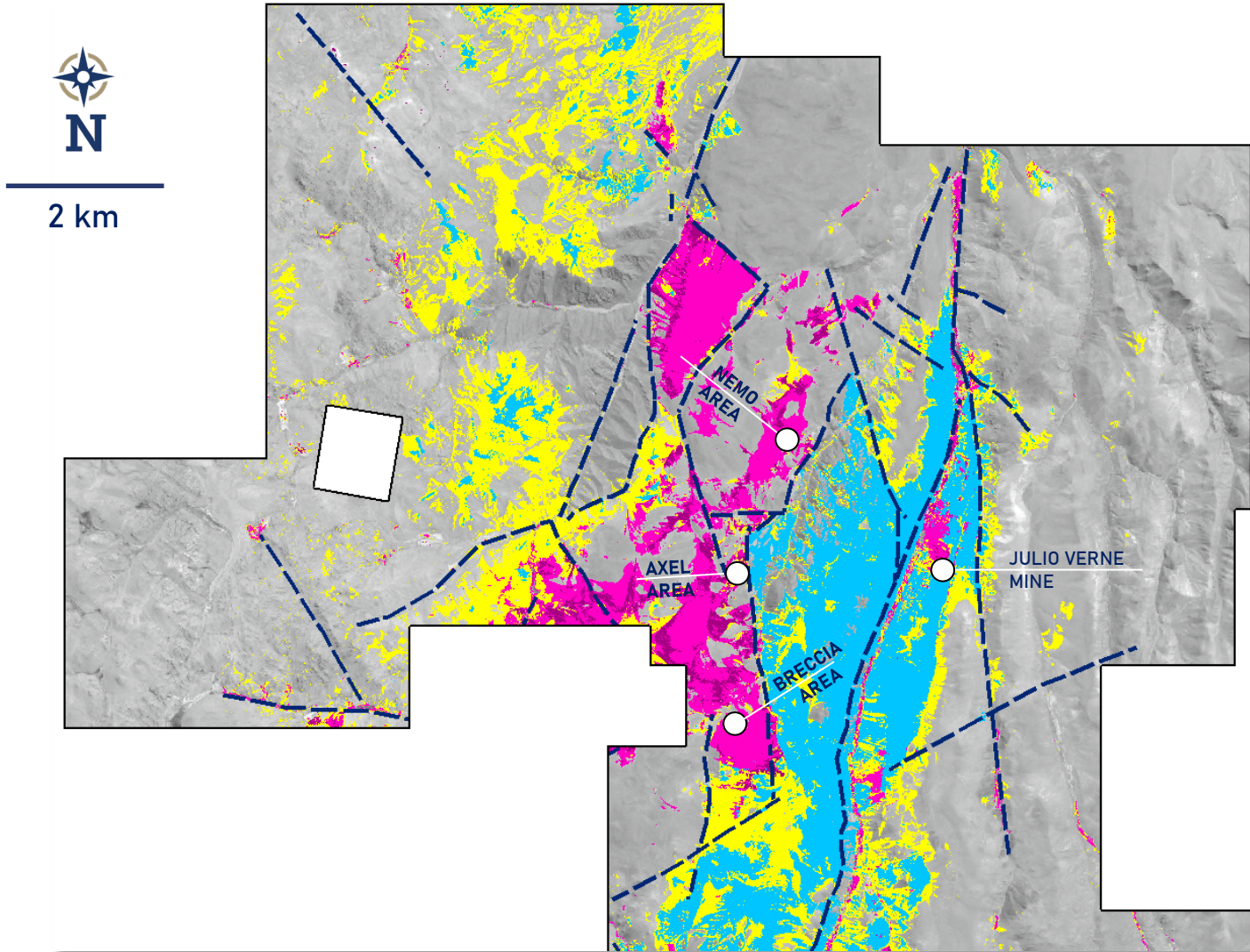
- Secure new partner and move to drilling
- Previous experience shows this to be an opportunity for superior commercial terms





Organullo Gold Project

Available
for
Partnership



Hyperspectral Data

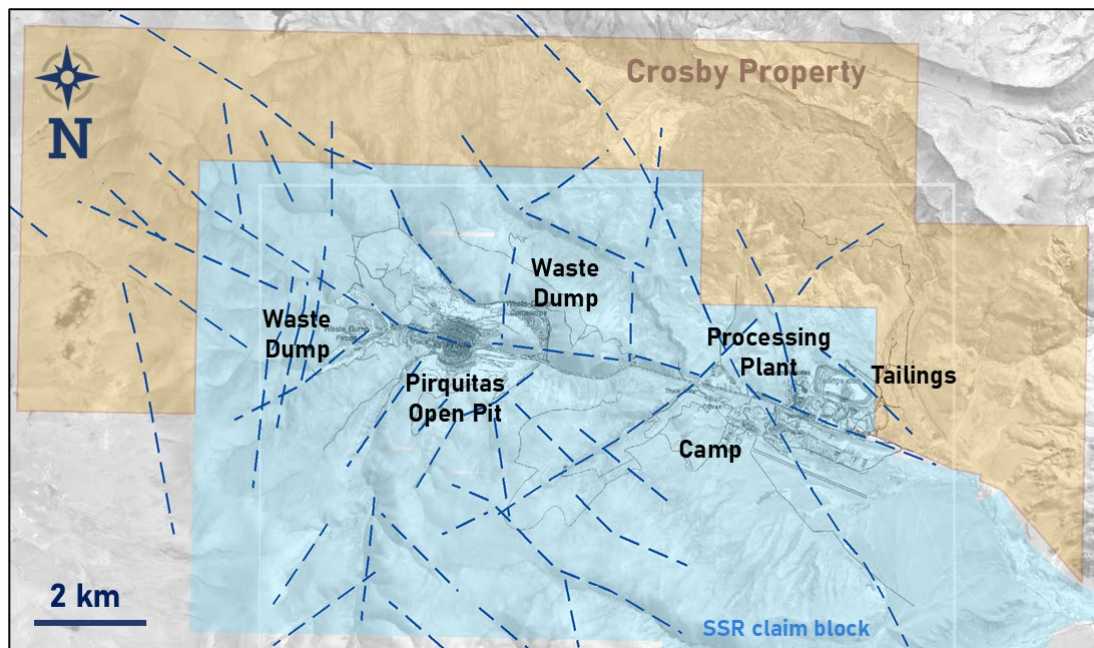
In pink tones, Advanced – Argillic alteration a very ubiquitous characteristic in high sulphidation epithermal systems and porphyry lithocap environment.





Crosby Silver Project

Available
for
Partnership



Strategic Near-Mine Silver Opportunity

- 100%-owned silver exploration project in Jujuy Province, Argentina
- Located at the southern end of the Bolivian Tin–Silver Belt
- Directly contiguous with SSR Mining’s Pirquitas operation
- Adjacent to historical open pit, processing plant, tailings, and camp infrastructure
- District-scale epithermal silver system with mapped structural continuity



Compelling Exploration Upside

- Crosby covers interpreted structural trends that extend from the Pirquitas mining area onto Latin Metals’ ground
- Multiple mapped structures and favorable stratigraphy identified across the property
- Two high-priority target areas defined for potential additional silver mineralization



Sediment-Hosted Copper Projects

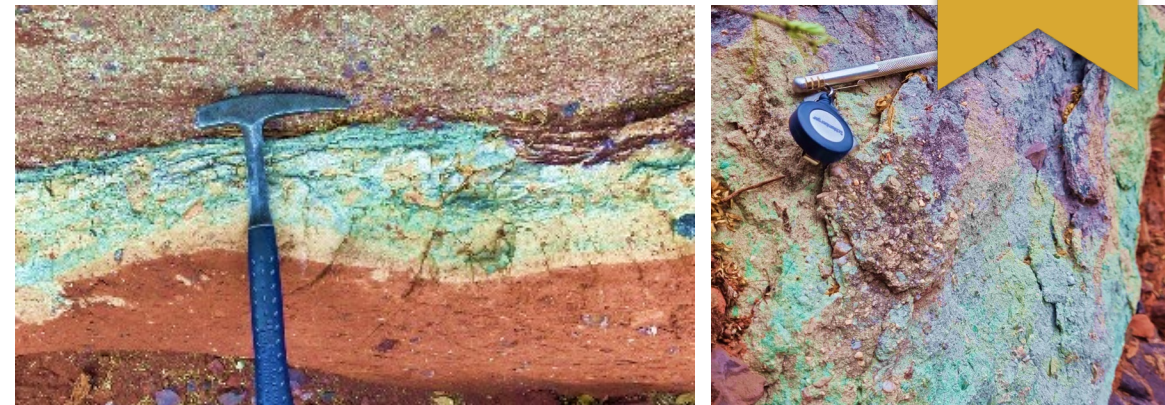
Available for Partnership

Regional Copper Play

District-Scale Land Position: Massive 500,000 hectares in northwest Argentina

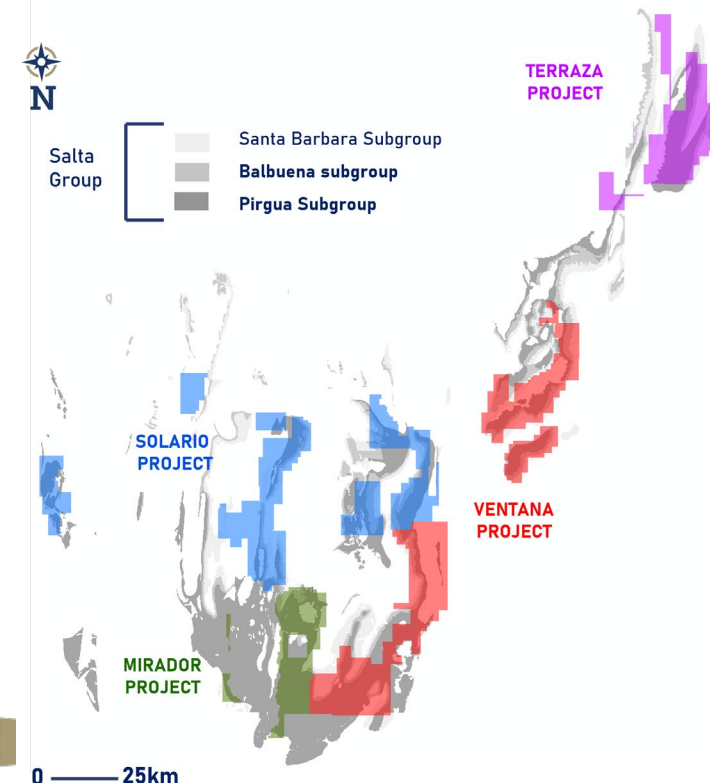
Sediment-Hosted Copper: Zambia copper belt analogy – favourable host rocks, structure, redox boundaries, and historical deposits. Proof of concept completed.

Catalysts: Seeking major company partner to explore this very large land position



Sediment-hosted copper outcrops at Mirador

	Argentina	Peru	Columbia	Bulgaria	Botswana	Kazakhstan
Owner	Latin Metals	Hannan Metals	Max Resources	Mundoro Capital	Cobre Ltd.	Pallas Resources
Area	500,000 ha	517,000 ha	188,000 ha	166,000 ha	-	16,000,000 ha
Earn-In Investment	-	US \$35 million	US \$36 million	not disclosed	US \$35 million	US \$143 million
Earn-In %	-	75%	75%	75%	75%	80%
Top-Up Right	-	10% (85%)	-	5% (80%)	-	-
Partner	Seeking Partner	JOGMEC	Freeport	JOGMEC	BHP	Ivanhoe
Project Start		2020 Agreement	2024 Agreement	2019 Alliance, 2022 Project Start	2024	2025
Status	Applications moving to Cateo	Stalled? No drill permit?	Unknown	Legal objections & permitting issues	Active	Active





Peru

Advancing Mining & Growth



Infrastructure Development

The government continues to expand transport and port infrastructure to support mineral exports. The new Chancay Mega Port, near Latin Metals' Lacsha copper project, is on track to become a critical hub for global copper trade in 2025–2026.



Investment Surge

Peru's Ministry of Energy and Mines projects \$6B+ in new mining investments through 2025–2026, led by copper development and expansion projects. Foreign direct investment is accelerating as Peru reasserts its role in the global copper supply chain.



Robust Economy

Mining contributes ~10% of Peru's GDP and nearly 60% of export revenues, making it a cornerstone of national growth. With a pro-mining policy stance and strong fiscal reliance on the sector, Peru remains one of the world's most mining-driven economies.



#2 Copper Producer

Peru accounts for ~11% of global copper supply and is forecast to grow output at a 5% CAGR through 2026, driven by expansions and new discoveries. Copper remains the backbone of Peru's mining sector — positioning the country at the center of the energy transition.



LEGEND

- SEEKING PARTNER
- LMS EXPLORATION
- OPTIONED TO PARTNER
- LMS ROYALTY





Lacsha Copper Project

100% Owned, Drill Permitted, Drill Ready

Available for Partnership



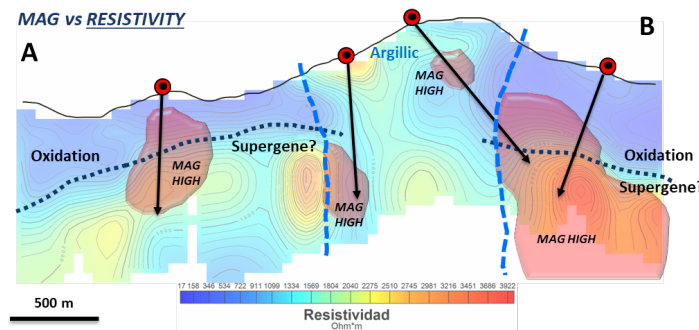
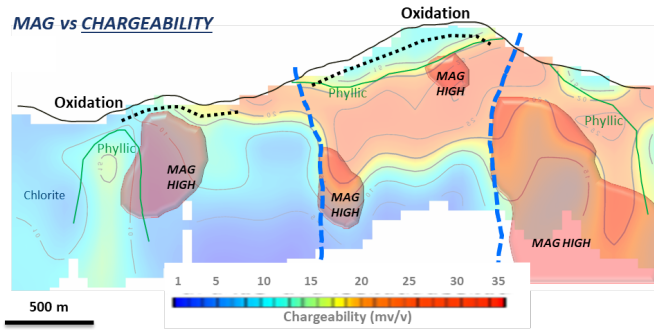
Strategic Asset with High Potential

- Adjacent to Newmont's Sumacwayra copper-gold discovery, sharing similar geological features.
- Drill-permitted site showing consistent mineralization at the surface.
- Geochemical surveys indicate a robust copper core with significant molybdenum anomalies.



Proven Mineralization with Attractive Grades

- Talus sampling and rock chip results reveal high-grade copper (>300ppm) and molybdenum (>10ppm).
- Geophysical surveys outline extensive high-chargeability zones, suggesting a large sulphide system.



Target Area	Highlights Composite Grades (0.20% copper or greater)	Grade Range (%)
Lacsha North	72m @ 0.20% copper, 62ppm moly; incl. 46m@0.25% copper, 81ppm moly	0.07% - 0.68%
Lacsha South	30m @0.22% copper, 76ppm moly; and 26m @ 0.20% copper, 119ppm moly	0.04% - 4.10%
Lacsha South-West	136m @ 0.24% copper, 179ppm moly; incl. 52m @ 0.38% Copper, 237ppm moly	0.05% - 4.52%

Highlights of Lacsha Continuous Rock Chip Sampling Results





Tillo Copper Project

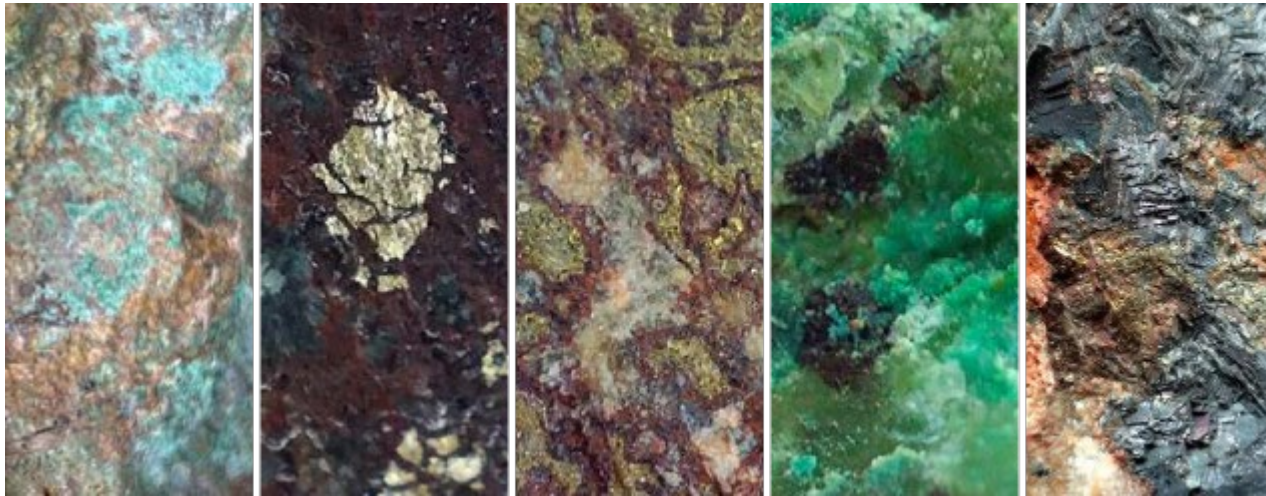
100% Owned, Porphyry & VMS Targets, Exploration Ongoing

Available
for
Partnership

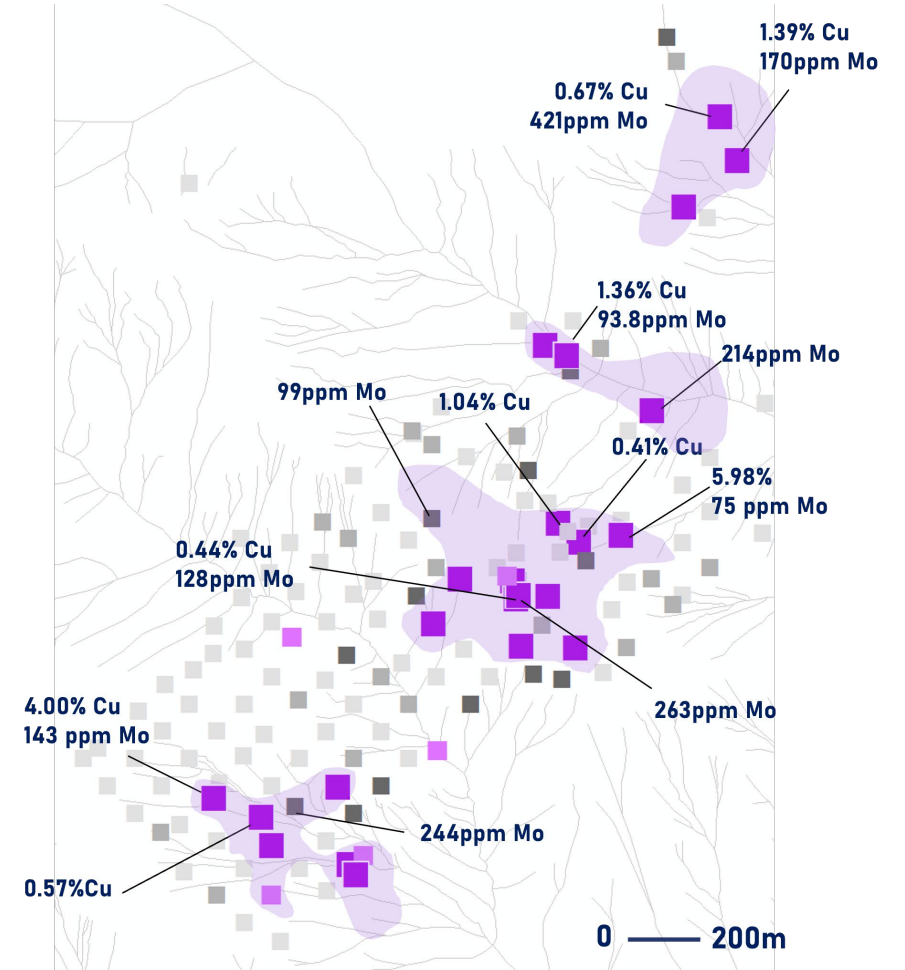


High Priority Copper Projects

- Located close to a cluster of VMS deposits (10km west of Balducho, 30km north of La Palma, 45km north of Perubar).
- Strong porphyry style mineralization as well as significant VMS potential within volcanic rocks.



Copper oxide / sulphide mineralization and massive lead-copper sulphides



Highlights of Rock Chip Sampling Results





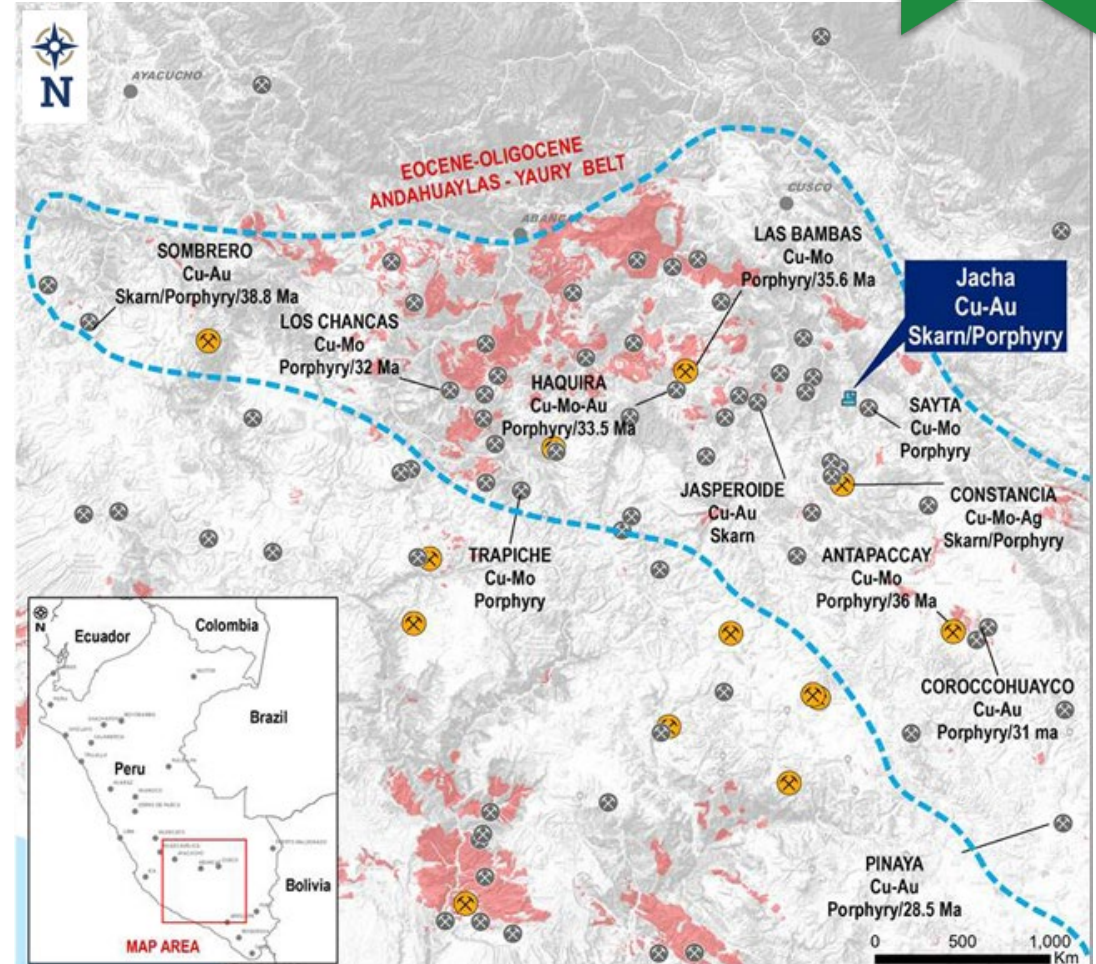
Jacha Copper Project

Available
for
Partnership



Staking Quality Copper Exploration Projects

- Jacha Project is located into the prolific Andahuaylas-Yauri porphyry-skarn belt in southeastern Peru
- This belt hosts numerous copper deposits:
 - Las Bambas copper-molybdenum mine
 - undeveloped Haquira porphyry copper deposit
 - Constancia copper-molybdenum mine
 - Antapaccay copper-gold mine



Map of Southern Peru Copper belt, highlighting Latin Metals' project as well as known deposits and mines



Mina Angela Royalty, Argentina



Disposition to Patagonia Gold

- Cash consideration of US\$600,000 received
- Cash payment US\$500,000 following removal of mining restrictions in Chubut Province
- Latin Metals holds a 1.25% NSR royalty on future production



Past Production 1978 to 1992

- Production figures from 1978 to 1983 are not available
- From 1983 until closure in 1992, Mina Angela reportedly produced 1,037,360 tonnes at an average grade of 4.0 g/t Au, 48.4 g/t Ag, 2.0% Pb, 0.4% Cu and 4.6% Zn



Mineralized outcrop at Mina Angela



Operators Post-1992

- Lonrho Mining South Africa - Exploration completed 1997 to 1998 (18 holes for 3,500m). Encouraging results but Lonrho exited South America.
- Hoschild Mining - Initiated feasibility study in 2007 with a view to reopening the mine site but exited project during 2008 credit crisis
- 360 drill holes (22,000m) completed on the property





Massive Pegmatite Outcrops



Channel Sampling El Quemado Pegmatites



Disposition Golden Goose Resources

- Consideration \$900,000
 - \$400,000 cash
 - \$500,000 marketable securities (shares and warrants)
- Latin Metals retains a 2.0% NSR royalty on future production



Past Production 1943 to 1981

- Mined sporadically over several decades. Production-focus was tantalum, niobium, and bismuth.
- Current global focus in battery metals unlocks new exploration opportunities for this regional LCT pegmatite swarm.
- Latin Metals' exploration identified multiple zones of pegmatite veins and proved the existence of lithium minerals including spodumene.





Share Structure

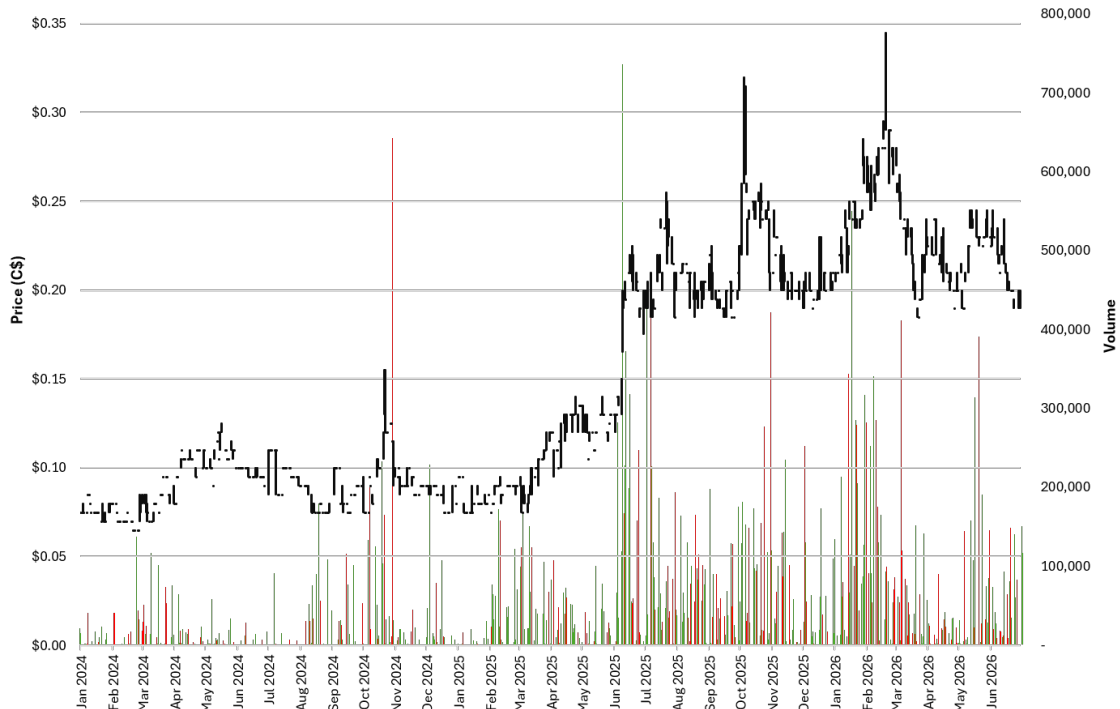
138,695,650
Issued and Outstanding

9,020,000
Options

24,395,454
Warrants

172,111,104
Fully Diluted

For detailed options and warrant terms, please refer to Disclosure Notes.



Excellent Structure

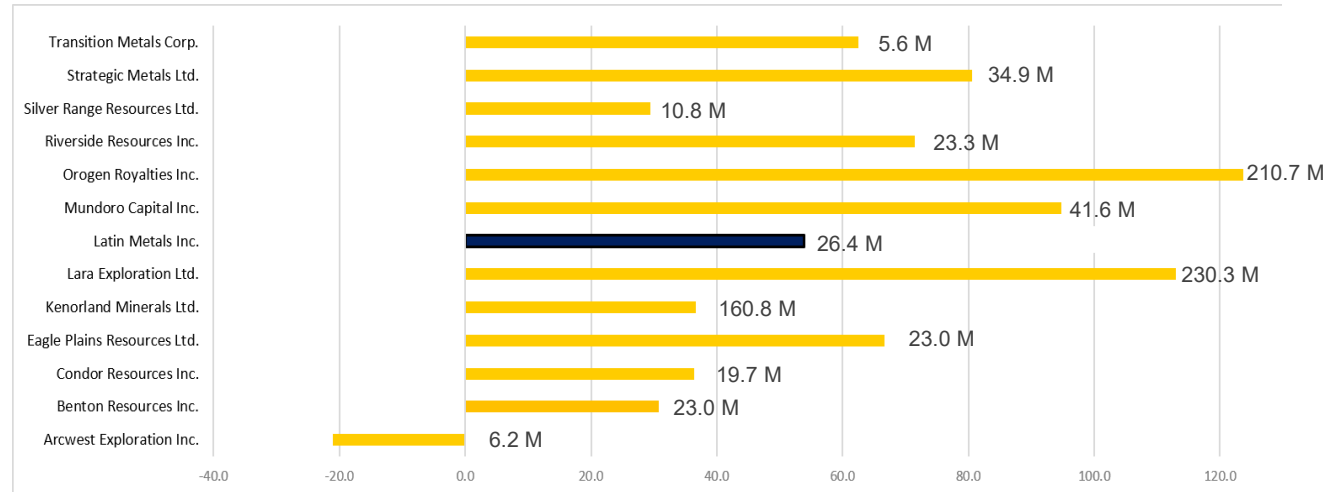
- 138 million shares issued and outstanding
- Around 40% with Management and Board



Less Shareholder Dilution

- Company runs lean at <\$3.0 million per annum
- Current option agreements in place for up to **\$80 million of non-dilutive investment** in Latin Metals and its projects

Peer Benchmarking Analysis: 12 Month Trailing



*Data captured on 06/30/2026



Management Team



Keith Henderson, CEO

Vancouver, Canada

- 30+ years of global experience in the resource sector
- Led US\$59M asset sale at Velocity Minerals
- Key role in advancing Pampa de Pongo (~US\$100M transaction)



Dani Palahanova, CFO

Vancouver, Canada

- 15+ years of experience in finance and accounting
- Former CFO, Controller, and Corporate Secretary for public companies



Dr. Mario Castelli, President

Salta, Argentina

- 30+ years of experience in mining law and regulatory frameworks
- Former senior roles in provincial and federal government agencies



Elyssia Patterson, VP Investor Relations

Vancouver, Canada

- 15+ years of experience in corporate communications and investor relations
- Focused on investor engagement, corporate positioning, and capital markets strategy



Eduardo Leon, VP Exploration

Lima, Peru

- Senior geologist at Lumina's Taca Taca project (sold for ~\$470M)
- Extensive experience advancing copper-gold systems across South America
- Former Exploration Manager at Auryn Resources

PROVEN TEAM. REPEATABLE DISCOVERY.

Advancing and monetizing mineral assets, supported by strong relationships with major mining companies.

Proven track record advancing projects through partnership, discovery, and value realization.



Board of Directors



Keith Henderson

- 30+ years of global experience in the resource sector
- Led US\$59M asset sale at Velocity Minerals
- Key role in advancing Pampa de Pongo (~US\$100M transaction)



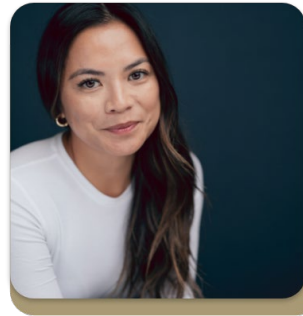
Robert Kopple

- Businessman, investor, and corporate lawyer with extensive public company experience
- Senior partner in a U.S. law firm specializing in mergers, acquisitions, and corporate finance
- Advises companies on structuring and executing strategic transactions



David Cass

- 30+ years of global exploration experience• 15 years with Anglo American, including Exploration Manager North America
- Former VP Exploration at Bluestone Resources (Cerro Blanco gold project)
- Currently Senior Director, Exploration at Coeur Mining



Felicia de la Paz

- 15+ years of experience in financial reporting and governance in the mining sector
- CFO and Corporate Secretary at FPX Nickel; former roles at Equinox Gold
- Expertise in public company reporting, compliance, and financial oversight





Top Six Reasons To Invest In Latin Metals

PARTNERSHIPS AND INDUSTRY BACKING

Collaborations with Moxico Resources, Daura Gold and other majors highlight Latin Metals' credibility.
Over \$15M in partner-funded exploration anticipated in 2026, fully leveraging the prospect generator model.

DIVERSIFIED EXPLORATION PORTFOLIO

Exploration projects and royalties across Peru and Argentina in copper, gold, and silver.
Multiple drill-ready targets in 2026 increase the probability of high-impact discoveries.

SHAREHOLDER-ALIGNED MANAGEMENT

The management and board collectively hold ~40% of the shares of Latin Metals.
Management is positioned for long-term alignment with shareholders.

STRATEGIC SOUTH AMERICAN FOCUS

Focused on South America's most prospective mineral belts, with core projects in Argentina and Peru.
Positioned in jurisdictions attracting long-term investment from global major mining companies.

PROSPECT GENERATOR MODEL

Partner-funded exploration minimizes costs while favouring asset-level dilution over shareholder dilution.
Investors retain discovery exposure across multiple projects without funding the full cost of exploration.

CATALYST-DRIVEN 2026 GROWTH PIPELINE

Over 18,000 metres of partner-funded drilling planned in 2026, across multiple projects in Argentina and Peru.
Consistent news flow from assays, permits, and new programs drives multiple opportunities for value re-rating.



2026 Catalysts



CATALYST 1 **Latin Explore Spin-Out**



LATIN
EXPLORE INC.

- 6% ownership in **TSXV: LXE**
- Copper-gold focused exploration portfolio
- **Q3 2026 drilling to drive initial results**



CATALYST 2 **Cerro Bayo**

DAURA
GOLD CORP

- Phase I drill results - May 2026
- Phase II drill start in Q3 2026 with assays in Q4
- **First drill test of high-grade La Flora property**



CATALYST 3 **Zaha**

m1 **MOXICO**
RESOURCES

- Drill permit expected Q3 2026
- **~15,000m partner-funded drill program**
- Targeting expansion of a district-scale system



CATALYST 4 **New Partners and Acquisitions**

- High-quality drill-ready assets in Argentina and Peru
- Targeting **new partner agreements in 2026**
- Portfolio growth through acquisitions





Marketable Securities



PARTNER EQUITY

Golden Goose Resources



- 1,000,000 shares and 1,000,000 warrants
- 2% NSR royalty on El Quemado Lithium Project
- Exposure to lithium exploration upside



PARTNER EQUITY

Daura Gold Corp.



- 744,992 Shares
- Option on the Cerro Bayo Silver-Gold Project
- ~3,000 metres of drilling planned for 2026



SPIN-OUT ASSET

Latin Explore Inc.



- **2,736,000 Shares** (~6% ownership)
- Drill-focused exploration company targeting high-impact opportunities in South America
- Focused on testing large-scale, geologically supported systems
- **2026 Catalysts:**
 - ❖ Initial drilling at Para- high-potential porphyry exploration
 - ❖ Planned acquisition of advanced resource-stage assets with significant upside



Moxico Option for Zaha

Latin Metals entered into a binding letter agreement with Atlantic Metals Limited, a wholly owned subsidiary of Moxico Resources plc (collectively “Moxico”), made as of October 7, 2024 (as amended). Under the terms of the letter agreement, Moxico has been granted the option to earn a 75% interest in Latin Metals’ Esperanza and Huachi copper exploration projects located in San Juan Province, Argentina, now collectively called Zaha. To exercise the option, Moxico must: (i) make staged cash payments to Latin Metals totaling USD \$2,675,000; (ii) assume USD \$4,633,000 in outstanding payment obligations to the Projects’ underlying owners; (iii) invest USD \$1,000,000 in work expenditures at Huachi; and (iv) complete 65,000 meters of drilling across the Projects. Subject to receipt of drill permits, the completion of 5,000m of drilling is a firm commitment. Upon exercise of the option, Moxico shall have a top-up right, whereby Moxico can elect within 60 days of the option exercise date to purchase the remaining 25% interest in the projects held by Latin Metals (for an aggregate 100% interest in the projects) by completing a cash payment to Latin Metals equal to the greater of (i) USD \$10,000,000 or (ii) an amount equal to USD \$0.02/lb multiplied by the quantity (in pounds) of copper equivalent in the measured and indicated resource categories. If the top-up right is exercised, Latin Metals’ interest in the projects shall be converted to a 2% net smelter returns (NSR) royalty. Upon the fulfilment of the payment obligations and work commitments set forth above, and the delivery by Moxico to Latin Metals of a notice of exercise of the option and subject to the exercise of the top-up-right, Moxico and Latin Metals will be deemed to have formed a joint venture for the continued exploration, development and, if warranted, commercialization of the Projects, in respect of which the initial participating interests of the parties will be, Moxico as to 75% and Latin Metals as to 25%. If and when the parties form the joint venture, the provisions of the agreement governing the joint venture will be negotiated and settled by the parties and will provide, among other things, that if the participating interest of either party falls below 10%, the interest of such party shall be converted to a 1% NSR royalty (according to royalty terms to be agreed upon between the parties). In addition, if at any time while Latin Metals holds a 10% or greater participating interest, it shall have the option, exercisable at its discretion by providing notice to the operator of the Joint Venture, to require the joint venture to repurchase or redeem its participating interest without consideration, and grant Latin Metals a 2% NSR royalty payable on all minerals, metals and ores mined or removed from the projects (according to royalty terms to be agreed upon between the parties).

Option for Esperanza Property

On March 1, 2017, Latin Metals received TSX-V approval for the Esperanza option agreement to acquire a 100% interest in the Esperanza copper-gold porphyry deposit. On July 9, 2018, the Company entered into a Definitive property option agreement (as amended) in respect to Esperanza. Under the terms of the option agreement, Latin Metals has the right to earn a 100% interest in the Esperanza property by paying aggregate US\$2,306,000 cash and issuing Latin Metals common shares valued at US\$500,000. Upon completion of the option payments and share issuances the Company will be deemed to have exercised the option and will have earned an undivided 100% legal and beneficial interest in and to the project, subject to a 2% NSR royalty to be granted to the vendor. The Company will have a right to buy back 0.5 % of the NSR royalty for US\$ 1,000,000, at which time the NSR royalty payable to the vendor shall be 1.5%.

Option for Huachi Property

On July 23, 2025, Latin Metals signed a definitive option agreement with Golden Arrow Resources Corp. to acquire up to a 100% interest in the 3,500-hectare Huachi copper-gold project, located in San Juan Province, Argentina. Huachi is contiguous with the Company’s Esperanza project. Under the agreement, Latin Metals can earn an initial 75% interest by completing US\$1,000,000 in exploration expenditures and making US\$1,000,000 in staged cash payments to Golden Arrow over a four-year period, beginning on the first anniversary of the environmental permit (Declaración de Impacto Ambiental, or DIA) approval. Upon earning 75%, Latin Metals holds a Top-Up Right to acquire the remaining 25% interest (for an aggregate 100%) by paying US\$2,000,000 in cash to Golden Arrow within 90 days. If the Top-Up Right is not exercised, Latin Metals and Golden Arrow will form a joint venture, with Latin Metals holding 75% and Golden Arrow 25%, to continue exploration and development. If either party’s interest falls below 15%, it will be reduced to a 1% NSR royalty.



Disclosure Notes

Option for Cerro Bayo and La Flora Properties

The properties are located within the Deseado massif in Santa Cruz Province, Argentina. The Company has entered into an amended agreement with the underlying vendor, Tres Cerros Exploraciones S.R.L. ("TCE"), to acquire the remaining 29% interest and consolidate 100% ownership of the properties. Latin Metals previously vested a 71% interest and will now complete the acquisition through total consideration of US\$400,000, payable in three tranches: US\$100,000 on or before June 30, 2025; US\$150,000 on or before June 30, 2026; and US\$150,000 on or before June 30, 2027. The amended agreement eliminates the requirement to deliver a technical report in accordance with NI 43-101 Standards of Disclosure for Mineral Projects and replaces the previous payment obligations totaling US\$1,553,000. The vendor retains a 0.75% NSR royalty, of which two-thirds (0.5%) can be purchased by the Company at any time for US\$1,000,000. The revised structure provides Latin Metals with greater financial flexibility and secures 100% ownership of a fully permitted, drill-ready silver-gold exploration asset.

Daura Gold Option

Latin Metals Inc. entered into a binding Letter Agreement with Daura Gold Corp ("Daura") under the terms of which, Daura can earn up to an 80% interest in the Cerro Bayo and La Flora projects. Daura will be granted the option to earn 75% undivided interest in the Cerro Bayo property for a period of three years from the date of execution and delivery of the Letter Agreement. Cerro Bayo and La Flora are currently subject to an underlying purchase agreement (as amended) between Latin Metals and Tres Cerros Exploraciones S.R.L. ("Tres Cerros"). Tres Cerros retains a 0.75% NSR royalty of which 0.5% can be purchased for US \$1,000,000, which cost will be assumed by Daura. To exercise the option, Daura must make aggregate payments of US \$1,700,000 to Latin Metals, assume payments of US \$400,000 to the Underlying Vendor, complete 30,000m of drilling, and prepare and deliver to Latin Metals a report prepared in accordance with Form 43-101F1 on the Properties, addressed to Latin Metals and containing a mineral resource estimate on the properties. An aggregate total of \$700,000 payments to Latin Metals and the Underlying Vendor, and 5,000m of drilling, are irrevocable commitments. Of the \$300,000 payable to Latin Metals on signing, (i) \$100,000 is payable in cash, and (ii) \$200,000 is payable in cash or, at Daura's election, through the issuance of an equivalent monetary amount in Daura Shares. Concurrently with the exercise of the Option, Daura may give notice to Latin Metals of its intention to increase its interest in the Property to 80% (the "Top-Up Right"). To exercise the Top-Up Right, Daura must make cash payments to Latin Metals based on the measured, indicated and inferred mineral resources included in the mineral resource estimate set out in the Technical Report, as follows: US\$7.00 per gold equivalent ounce of measured and indicated resources; and US\$5.00 per gold equivalent ounce of inferred resources. Upon written notice by Daura to Latin Metals of the exercise of the Option, Latin Metals and Daura will be deemed to have formed a joint venture in respect of which the initial participating interests of the parties will be 75% Daura (80% if the Top-Up Right is exercised), and 25% Latin Metals (20% if the Top-Up Right is exercised). Upon the formation of the Joint Venture, Daura will assume Latin Metals' existing right to repurchase 0.5% of the existing 0.75% net smelter returns royalty from the Underlying Vendor for US\$1,000,000. If the interest of either party falls below 10%, the parties' interest will be converted to a 2% NSR royalty, of which half (being 1%) can be purchased by the other party for US\$5,000,000 at any time until 3 months after a production decision. Following the Top-Up Right expiry date, and for 90 days thereafter, Latin Metals may elect in its sole discretion to convert its interest in the Joint Venture to a 3.0% net smelter returns royalty (the "Converted Royalty"), leaving Daura with a 100% interest in the Property. Daura shall have the right to purchase 33.33% (being 1%) of the Converted Royalty upon the payment to Latin Metals of US\$5,000,000 at any time until the date that is three months after a production decision on the Property has been made, in which case the Converted Royalty shall be reduced to 2.0%.





Disclosure Notes

Options

Units	Exercise Price	Expiry Date
950,000	\$0.10	July 10, 2027
1,370,000	\$0.10	October 16, 2027
300,000	\$0.12	October 24, 2027
1,350,000	\$0.12	April 2, 2028
750,000	\$0.12	May 8, 2028
4,300,000	\$0.22	January 12, 2029
9,020,000	Total Options Outstanding	

Warrants

Units	Exercise Price	Expiry Date
12,300,000	\$0.15	Sept 26, 2026
12,095,454	\$0.20	May 20, 2028
24,395,454	Total Warrants Outstanding	

Data Captured 25/5/2026





LATIN METALS INC.



Contact Us

**TSX.V:
LMS**

**OTCQB:
LMSQF**

Head Office Latin Metals Inc.
1920, 1188 West Georgia Street
Vancouver, BC, Canada V6E 4A2

Email: info@latin-metals.com
Phone: 778-683-4324

WWW.LATIN-METALS.COM

SCAN FOR THE WEBSITE

