

VERTICALLY INTEGRATED GAS PRODUCER

DESERT
MOUNTAIN
ENERGY CORP.

77,000 ACRES OF LAND IN NEW MEXICO
+ 100,000 ACRES OF LAND IN ARIZONA

FORWARD-LOOKING STATEMENTS



Statements in this presentation that are forward-looking statements are subject to various risks and uncertainties concerning the specific factors. Such forward-looking information represents management's best judgment based on information currently available. No forward-looking statement can be guaranteed and actual future results may vary materially. Desert Mountain Energy Corp. does not assume the obligation to update any forward-looking statement.

ABOUT

77,000 acres of land with 188 producing gas wells and over 50 miles of gas collection system near Roswell, New Mexico

+100,000 acres of mineral leases, four helium fields and 8 helium wells in the Holbrook Basin, Northeastern Arizona

Successfully drilled 5 wildcat helium wells and 3 offsets in Arizona

Commercial helium sales commenced in Q1 2025

Generating revenue from drilling investments and gas sales

Focused on increasing gas volumes through field optimization in New Mexico

Desert Mountain Energy was selected for the 2023 OTCQX Best 50 and the TSXV Best 50



**DESERT MOUNTAIN
ENERGY CORP.**

Management Team

Robert Rohlfing, CEO & Executive Chairman, is a seasoned oil & gas industry operations executive with a strong geological background and over 25 years experience in formulating, conducting and managing successful exploration, drilling, development and production programs for oil & gas and minerals worldwide.

Don Mosher, President & Director, has 35 years of experience in corporate finance, business development, management and marketing. He has served on boards and management teams of many publicly traded companies, advising companies on marketing, financing and corporate strategies.

Valorie Farley, CPA & CFO, has experience in power generation and distribution, natural resources, regulatory and financial reporting, audits and real estate development.

Eric Witt, Drilling Operations Manager, was previously the drilling engineer for Conoco Philips and Marathon Drilling.

James Hayes, Vice President of Engineering, has over 14 years of experience in engineering design and with on-site field operations in Oklahoma, Texas, Colorado, North Dakota and Alaska.

Ched Wetz, Vice President of Risk Management, has served as the director of risk management/facility ethics as well as compliance officer/safety officer at various hospitals, care centres and businesses. He has served in a distinguished manner on numerous boards, both for-profit and non-profit, and joint commissions on accreditation for state departments.

Dr. James Cronoble, VP of Exploration and Director, earned his B.S. in Geology from the University of Oklahoma followed by both his M.S. and PhD. in Geology from the Colorado School of Mines. He has more than forty years of exploration and operations experience in the Rocky Mountains and Mid-Continent of the United States.

Board of Directors

Robert Rohlfing, CEO and Executive Chairman

Don Mosher, President & Director

Michael O'Shea, Chair of the Audit Committee & Director, is an accomplished professional with significant experience in senior audit and management roles. His career spanned +35 years initially articling with KPMG and the Ontario Provincial Auditor's Office, followed by senior audit positions at Enbridge and Gulf Canada.

Dr. James Cronoble, Vice President of Exploration & Director

Dr. Kelli Ward, Independent Director, has dedicated herself to medicine, business, public policy and politics for the past 25 years. In 2012, she ran and was elected for the Arizona State Senate. She is the former Chair of the Republican Party of Arizona.

Jenaya Rohlfing, Independent Director, is a Petroleum Engineer who has exhibited exceptional technical, leadership and organizational skills in all facets of drilling operations for oil & gas over the past 13 years in various management positions with ConocoPhillips. Currently, she is a Drilling Engineering Supervisor for ConocoPhillips', Permian Basin.

Weldon Stout, Independent Director, recently retired from his position after serving for eight years as a District Court Judge in Oklahoma. Prior to his appointment as a judge, his private practice focused on business, estate planning and Federal Court litigation. He served as both Assistant District Attorney following as Chief Prosecutor.

CAPITAL STRUCTURE

Outstanding shares: 90,258,109
Options: 8,395,918
Warrants: 3,024,918
Tradeable Warrants: 11,845,000
Fully diluted: 113,523,027

TSX Venture Exchange: DME U.S.
OTC: DMEHF Frankfurt
Exchange: QM01



WEST PECOS SLOPE ABO GAS FIELD



[TO WATCH A FLYOVER OF THE WEST PECOS SLOPE ABO GAS FIELD, CLICK HERE](#)

WEST PECOS SLOPE ABO GAS FIELD

The processing facility has been relocated, reassembled with required adjustments, and is currently operational for commercial purposes. **DME is now distributing processed natural gas and refined helium.**



THE DME HELIUM PROCESSING FACILITY

- Throughput is modified to meet specific raw gas mixes.
- The processing facility is powered by natural gas from the West Pecos Gas Field. However, it has the flexibility to be modified and operated using different energy sources, such as solar power.
- Gas production is achieved by commingling the natural gas wells in the West Pecos Gas Field, which contain varying grades of helium.
- The Company is focused on increasing volumes of raw gas with a combination of downhole solutions and adding compressors to the collection system, reducing bottlenecks and pigging the line to allow optimized gas flows.
- DME's helium processing facility can handle the co-production of helium and hydrogen gases.
- The helium processing facility has the capability to process helium with varying grades ranging from 0.03% to 11%.



Internal view of 1 of the 4 modular housing units that house the helium processing facility

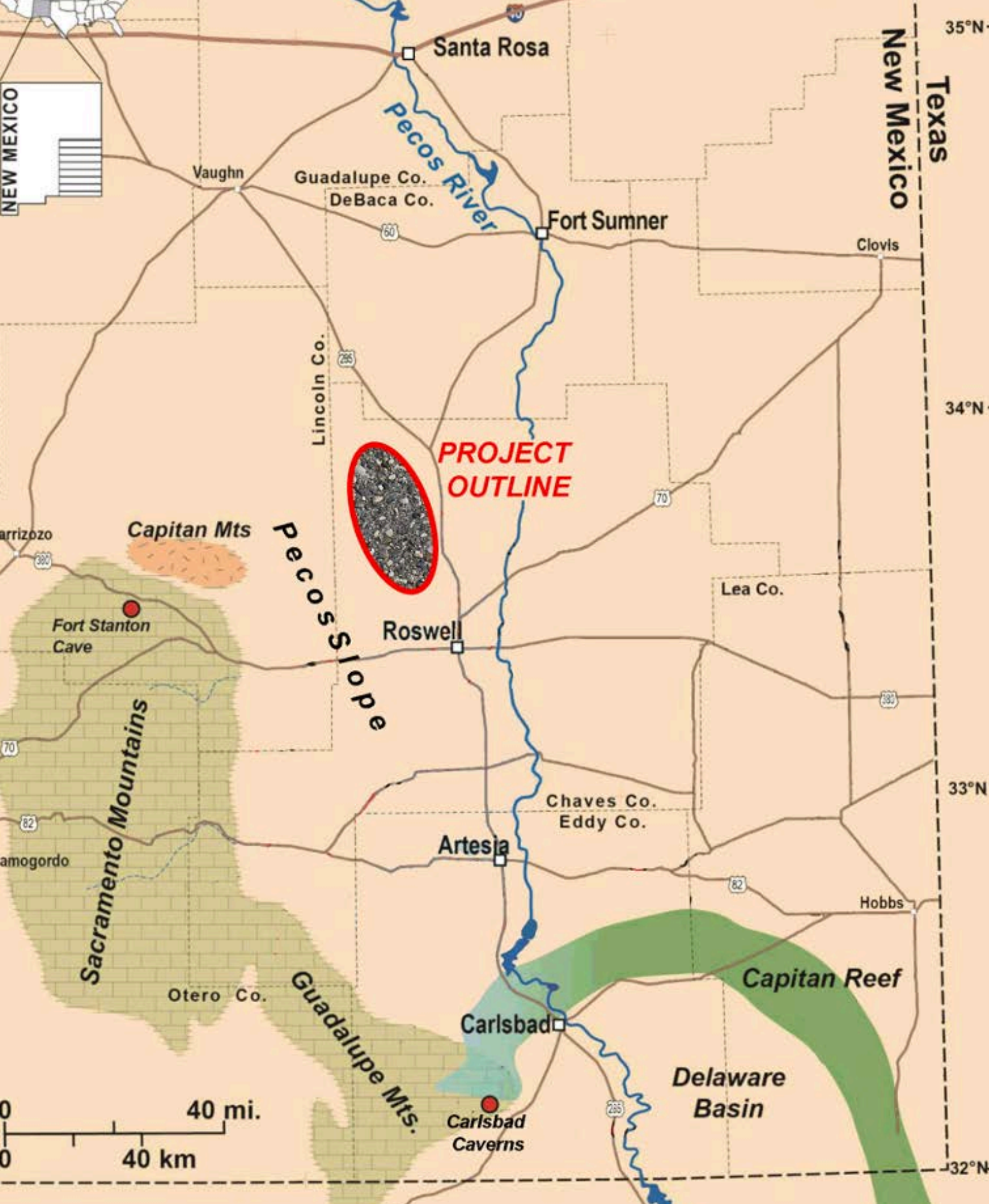
THE WEST PECOS SLOPE ABO GAS FIELD IN NEW MEXICO

The West Pecos Slope Abo Gas Field, located in the heart of New Mexico, is in close proximity to the historic town of Roswell, known for its intriguing alien activity.

New Mexico has a long-standing reputation as a leader in oil and natural gas production in the U.S., making it an ideal location for energy exploration and development. The thriving oil and natural gas sector in New Mexico provides seamless access to a wide range of services and supplies, resulting in significant cost savings and minimal wait times.



**DESERT MOUNTAIN
ENERGY CORP.**

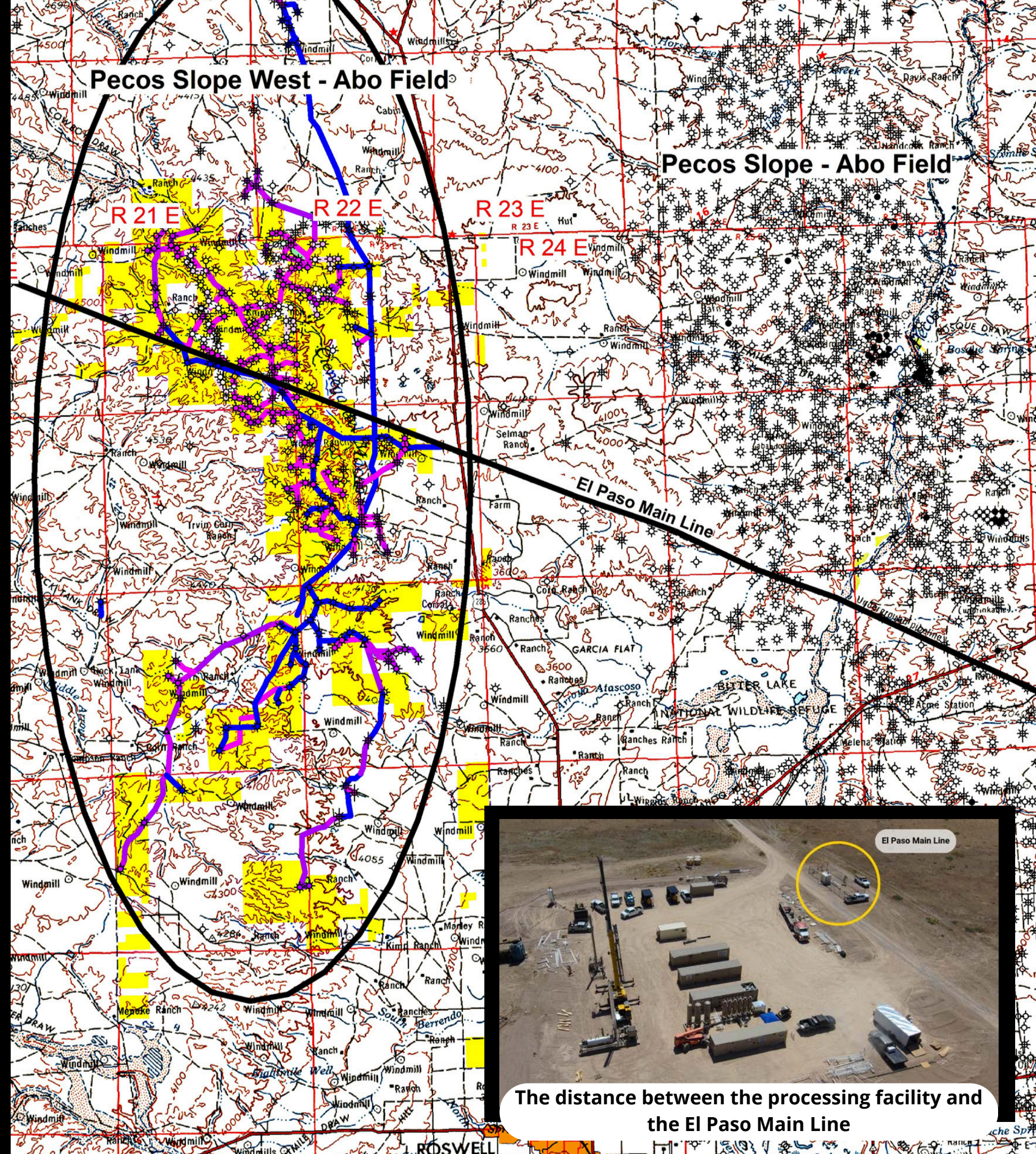


THE WEST PECOS SLOPE ABO GAS FIELD

The West Pecos Slope Abo Gas Field encompasses a vast infrastructure, including 188 producing wells, over 50 miles of gas collection lines, and 77,000 acres of oil and gas leases. With the potential for future expansion, an additional 70-100 wells could be developed.

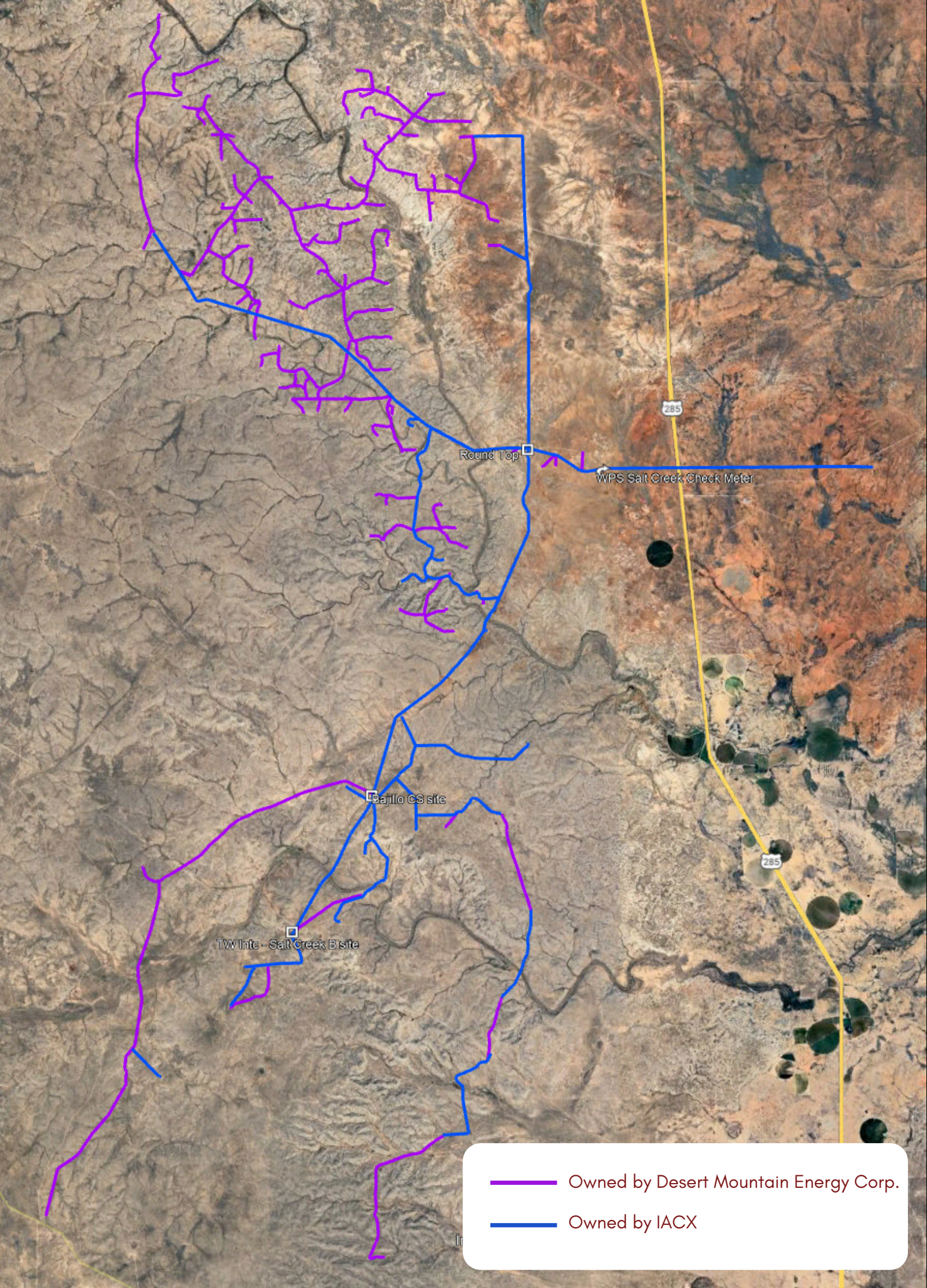
The primary source of revenue for the company will come from the sales of helium and natural gas. DME operates a vertically integrated business model. With a prime location less than 300 feet from the El Paso Main Line, stretching from California to Texas, our processing facility offers the unique advantage of direct sales to end users.

In addition, DME is studying the potential for perforating virgin pay zones downhole in the producing wells.



The distance between the processing facility and the El Paso Main Line

WEST PECOS SLOPE ABO GAS FIELD GATHERING SYSTEM



— Owned by Desert Mountain Energy Corp.
— Owned by IACX

	\$5,000.00	64	\$ 320,000.00	Meters		
Miles of road	20	5000	\$ 100,000.00	Road ROW	\$ 60,000.00	
Miles of pipeline	44	\$12,000.00	\$ 528,000.00	Pipeline ROW	\$ 352,000.00	
			\$ 70,000.00	Pad ROW	\$ 700,000.00	
			\$ 100,000.00	Repair		
			\$1,118,000.00		\$ 1,112,000.00	Reclaim Cost

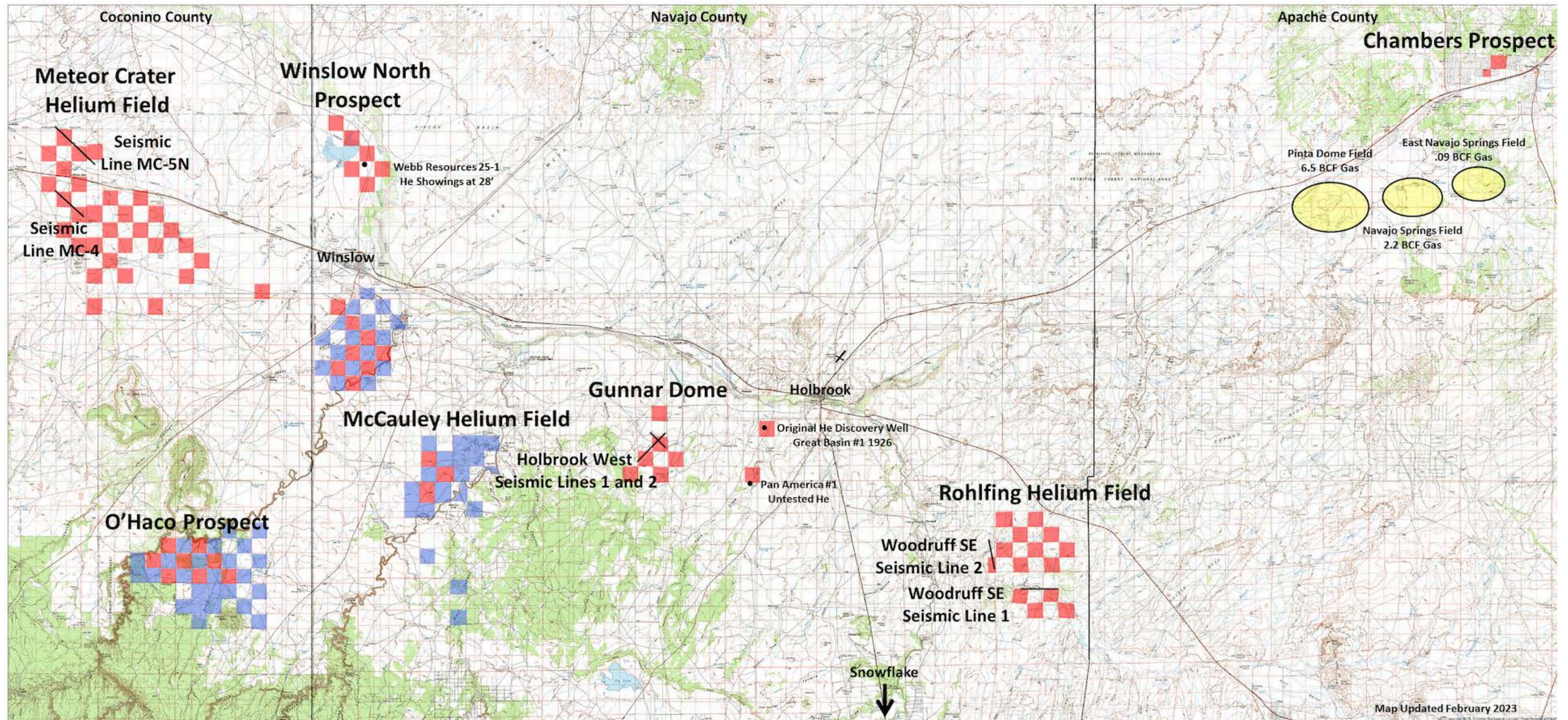
ARIZONA


NITROGEN/HELIUM FIELDS & MINERAL CLAIMS

- DME holds mineral leases on both State and private land, totalling over 100,000 acres.
- The Company has successfully drilled 5 wildcat wells, identifying multiple helium fields and 3 offset helium wells
- Hydrogen was discovered within the McCauley Helium Field
- Helium production at the McCauley Helium Field has faced delays due to permitting issues



DME's Lease Holdings and 2-D Seismic Geophysical Lines, Holbrook Basin, Arizona






**DESERT MOUNTAIN
ENERGY CORP.**

DME ASLD Leases


DME Private Leases and Options

Historic Helium Gas Fields

Seismic Geophysical Lines



N



5 Miles

In Summary:



- DME owns 77,000 acres of oil and gas leases in New Mexico with 188 producing gas wells and +50 miles of gas collection system.
- The Company plans to explore the possibility of drilling between 70 to 100 new wells in the West Pecos Gas Field.
- After processing the raw gas through the helium processing facility, revenue will be generated from helium and natural gas.
- DME is a vertically integrated company that sells its products directly to end users.
- The Company holds +100,000 acres of mineral claims in the state of Arizona.
- In Arizona, DME has successfully completed drilling operations for a total of 8 wells. These include 5 wildcat helium wells and 3 offset wells. As a result, DME has made significant discoveries, identifying multiple helium fields.
- DME intends to commence production on the Arizona wells once the necessary permits for stimulation work have been obtained.

CONTACT

ROBERT ROHLFING

CEO & EXECUTIVE
CHAIRMAN


 ROBERT@DESERTMOUNTAINENERGY.COM

 (918) 752-7020

DON MOSHER

PRESIDENT &
DIRECTOR

 DON@DESERTMOUNTAINENERGY.COM

 (604) 617-5448
